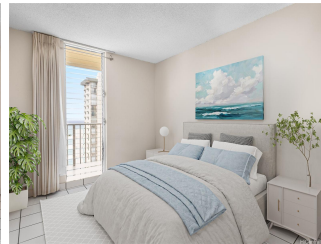


Waikiki Lanais 2452 Tusitala Street Unit 1803, Honolulu 96815 * Waikiki Lanais * \$395,000

* Originally \$420,000

Beds: 1	MLS#: 202401389, FS	Year Built: 1978
Bath: 1/0	Status: Active	Remodeled:
Living Sq. Ft.: 558	List Date & DOM: 02-05-2024 & 97	Total Parking: 1
Land Sq. Ft.: 0	Condition: Above Average	Assessed Value
Lanai Sq. Ft.: 98	Frontage:	Building: \$345,300
Sq. Ft. Other: 0	Tax/Year: \$123/2023	Land: \$58,700
Total Sq. Ft. 656	Neighborhood: Waikiki	Total: \$404,000
Maint./Assoc. \$771 / \$0	Flood Zone : Zone AE - Tool	Stories / CPR: 15-20 / No
Parking: Covered - 1, Guest	Frontage:	
Zoning : X2 - Apartment Precinct	View: Ocean	

Public Remarks: HUGE PRICE ADJUSTMENT! Discover the perfect blend of convenience and comfort in this 1-bedroom, 1-bathroom condo located at Waikiki Lanai in Honolulu. Situated in the heart of Waikiki, this fee simple property offers not only a great living space but also easy access to shops, the beach, and entertainment. Enjoy the scenic Ala Wai Canal for jogging and the vibrant lifestyle that Waikiki has to offer. The unit features a spacious layout, a great kitchen, and comes with one designated parking space. The monthly maintenance fee covers all utilities, providing a hassle-free living experience. This pet-friendly and VA approved building also has a special assessment scheduled to end at the close of the year, making it an opportune time for potential buyers. Whether you're a first-time homebuyer, someone seeking a cozy space, or an investor looking for a rental property, this Waikiki Lanai condo offers a unique opportunity to own a piece of paradise. Disclaimer: All information provided is deemed reliable but not guaranteed. Buyers are advised to perform their due diligence and verify all details. 30 day min rental unless specified otherwise in condo docs. **Sale Conditions:** None **Schools:** , , * [Request Showing](#), [Photos](#), [History](#), [Maps](#), [Deed](#), [Watch List](#), [Tax Info](#)



Address	Price	Bd & Bth	Living / Avg.	Land Avg.	Lanai	Occ.	FL	DOM
2452 Tusitala Street 1803	\$395,000	1 & 1/0	558 \$708	0 \$inf	98	34%	18	97

Address	Tax Maint. Ass.	Assessed Land	Assessed Building	Assessed Total	Ratio	Year & Remodeled
2452 Tusitala Street 1803	\$123 \$771 \$0	\$58,700	\$345,300	\$404,000	98%	1978 & NA

[2452 Tusitala Street 1803](#) - MLS#: [202401389](#) - Original price was \$420,000 - HUGE PRICE ADJUSTMENT! Discover the perfect blend of convenience and comfort in this 1-bedroom, 1-bathroom condo located at Waikiki Lanai in Honolulu. Situated in the heart of Waikiki, this fee simple property offers not only a great living space but also easy access to shops, the beach, and entertainment. Enjoy the scenic Ala Wai Canal for jogging and the vibrant lifestyle that Waikiki has to offer. The unit features a spacious layout, a great kitchen, and comes with one designated parking space. The monthly maintenance fee covers all utilities, providing a hassle-free living experience. This pet-friendly and VA approved building also has a special assessment scheduled to end at the close of the year, making it an opportune time for potential buyers. Whether you're a first-time homebuyer, someone seeking a cozy space, or an investor looking for a rental property, this Waikiki Lanai condo offers a unique opportunity to own a piece of paradise. Disclaimer: All information provided is deemed reliable but not guaranteed. Buyers are advised to perform their due diligence and verify all details. 30 day min rental unless specified otherwise in condo docs. **Region:** Metro **Neighborhood:** Waikiki **Condition:** Above Average **Parking:** Covered - 1, Guest **Total Parking:** 1 **View:** Ocean **Frontage:** **Pool:** **Zoning:** X2 - Apartment Precinct **Sale Conditions:** None **Schools:** , , * [Request Showing](#), [Photos](#), [History](#), [Maps](#), [Deed](#), [Watch List](#), [Tax Info](#)

DOM = Days on Market, Occ. = Occupancy, FL = Floor Number