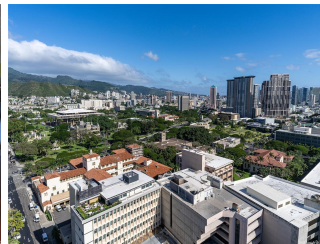
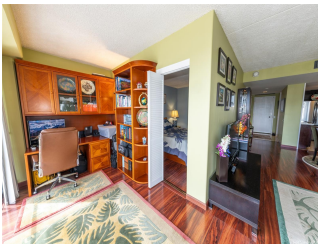
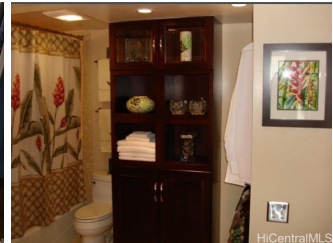


## **Harbor Square 700 Richards Street Unit 2608, Honolulu 96813 \* Harbor Square \* \$585,000**

**\* Originally \$605,000**

Beds: <b>1</b>	MLS#: <b><u>202401443</u>, FS</b>	Year Built: <b>1971</b>
Bath: <b>1/0</b>	Status: <b>Active</b>	Remodeled: <b>2011</b>
Living Sq. Ft.: <b>773</b>	List Date & DOM: <b>01-26-2024 &amp; 109</b>	Total Parking: <b>1</b>
Land Sq. Ft.: <b>67,910</b>	Condition: <b>Excellent, Above Average</b>	<a href="#">Assessed Value</a>
Lanai Sq. Ft.: <b>97</b>	Frontage: <b>Other</b>	Building: <b>\$435,800</b>
Sq. Ft. Other: <b>0</b>	Tax/Year: <b>\$73/2023</b>	Land: <b>\$65,700</b>
Total Sq. Ft. <b>870</b>	Neighborhood: <b>Downtown</b>	Total: <b>\$501,500</b>
Maint./Assoc. <b>\$1,252 / \$0</b>	<a href="#">Flood Zone</a> : <b>Zone X - Tool</b>	Stories / CPR: <b>21+ / No</b>
Parking: <b>Assigned, Covered - 1</b>	Frontage: <b>Other</b>	
<a href="#">Zoning</a> : <b>34 - BMX-4 Central Business Mix</b>	View: <b>City, Coastline, Diamond Head, Mountain, Ocean, Sunrise</b>	

**Public Remarks:** Rarely available and very desirable high floor "08" unit with epic panoramic views of the ocean, Kakaako skyline, Iolani Palace, Punchbowl rainbows, and more. Beautifully remodeled in an "L-shaped" layout, with travertine floors, upscale engineered hardwood floors, and cherry wood kitchen and bathroom cabinets. Executive office possibility with high floor ocean views, separating the large 773 square foot bedroom and remodeled bathroom. Bosch washer and dryer with newer upscale appliances and a unique walk-in closed-door pantry. Surrounded by restaurants, banks, hospitals, post office, Safeway and Whole Foods, Chinatown vendors and shops. Close to H-1 freeway, Capitol Building, Ala Moana Boulevard, Aloha Tower, Kakaako, Ward Village and Waikiki. Sold as-is, in excellent condition. **Sale Conditions:** None **Schools:** [Royal, Keelikolani, Mckinley](#) \* [Request Showing](#), [Photos](#), [History](#), [Maps](#), [Deed](#), [Watch List](#), [Tax Info](#)





Address	Price	Bd & Bth	Living / Avg.	Land   Avg.	Lanai	Occ.	FL	DOM
<a href="#">700 Richards Street 2608</a>	<b>\$585,000</b>	1 & 1/0	773   \$757	67,910   \$9	97	52%	26	109

Address	Tax   Maint.   Ass.	Assessed Land	Assessed Building	Assessed Total	Ratio	Year & Remodeled
<a href="#">700 Richards Street 2608</a>	\$73   \$1,252   \$0	\$65,700	\$435,800	\$501,500	117%	1971 & 2011

[700 Richards Street 2608](#) - MLS#: [202401443](#) - Original price was \$605,000 - Rarely available and very desirable high floor "08" unit with epic panoramic views of the ocean, Kakaako skyline, Iolani Palace, Punchbowl rainbows, and more. Beautifully remodeled in an "L-shaped" layout, with travertine floors, upscale engineered hardwood floors, and cherry wood kitchen and bathroom cabinets. Executive office possibility with high floor ocean views, separating the large 773 square foot bedroom and remodeled bathroom. Bosch washer and dryer with newer upscale appliances and a unique walk-in closed-door pantry. Surrounded by restaurants, banks, hospitals, post office, Safeway and Whole Foods, Chinatown vendors and shops. Close to H-1 freeway, Capitol Building, Ala Moana Boulevard, Aloha Tower, Kakaako, Ward Village and Waikiki. Sold as-is, in excellent condition. **Region:** Metro **Neighborhood:** Downtown **Condition:** Excellent, Above Average **Parking:** Assigned, Covered - 1 **Total Parking:** 1 **View:** City, Coastline, Diamond Head, Mountain, Ocean, Sunrise **Frontage:** Other **Pool:** **Zoning:** 34 - BMX-4 Central Business Mix **Sale Conditions:** None **Schools:** [Royal](#), [Keelikolani](#), [Mckinley](#) \* [Request Showing](#), [Photos](#), [History](#), [Maps](#), [Deed](#), [Watch List](#), [Tax Info](#)

DOM = Days on Market, Occ. = Occupancy, FL = Floor Number