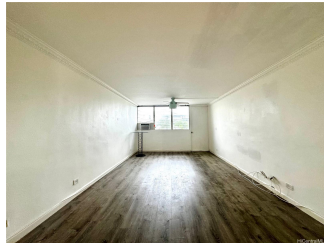


Mountain View Terrace 46-270 Kahuhipa Street Unit A307, Kaneohe 96744 * Mountain View Terrace * \$520,000 * Originally \$560,000

Beds: 2	MLS#: 202401738, FS	Year Built: 1974
Bath: 1/0	Status: Active	Remodeled:
Living Sq. Ft.: 833	List Date & DOM: 01-30-2024 & 99	Total Parking: 2
Land Sq. Ft.: 105,415	Condition: Average	Assessed Value
Lanai Sq. Ft.: 0	Frontage:	Building: \$413,800
Sq. Ft. Other: 0	Tax/Year: \$101/2023	Land: \$71,400
Total Sq. Ft. 833	Neighborhood: Windward Estates	Total: \$485,200
Maint./Assoc. \$649 / \$0	Flood Zone : Zone X - Tool	Stories / CPR: / No
Parking: Open - 2	Frontage:	
Zoning : 12 - A-2 Medium Density Apartme	View: Mountain	

Public Remarks: Excellent opportunity to own a great condominium in Kaneohe! Great 2 bedroom 1 bath in the Windward Estates subdivision! Enjoy this breezy and spacious unit. 2 Lanais! One lanai in the living room and another in the bedroom! Great mountain views, cool atmosphere and a very walkable environment. Washer and Dryer in the unit. 2 parking spaces available! Very rare opportunity to own at the Mountain View Terrace condominiums. Make this condo your new home! Easy to show, move in ready. Pets allowed with ESA Certification. Elevator services all floors. Recreational facilities include half court basketball court, volleyball court and swimming pool! Seller motivated. All offers considered. **Sale Conditions:** None
Schools: , , * [Request Showing](#), [Photos](#), [History](#), [Maps](#), [Deed](#), [Watch List](#), [Tax Info](#)



Address	Price	Bd & Bth	Living / Avg.	Land Avg.	Lanai	Occ.	FL	DOM
46-270 Kahuhipa Street A307	\$520,000	2 & 1/0	833 \$624	105,415 \$5	0	70%	3	99

Address	Tax Maint. Ass.	Assessed Land	Assessed Building	Assessed Total	Ratio	Year & Remodeled
46-270 Kahuhipa Street A307	\$101 \$649 \$0	\$71,400	\$413,800	\$485,200	107%	1974 & NA

46-270 Kahuhipa Street A307 - MLS#: **202401738** - Original price was \$560,000 - Excellent opportunity to own a great condominium in Kaneohe! Great 2 bedroom 1 bath in the Windward Estates subdivision! Enjoy this breezy and spacious unit. 2 Lanais! One lanai in the living room and another in the bedroom! Great mountain views, cool atmosphere and a very walkable environment. Washer and Dryer in the unit. 2 parking spaces available! Very rare opportunity to own at the Mountain View Terrace condominiums. Make this condo your new home! Easy to show, move in ready. Pets allowed with ESA Certification. Elevator services all floors. Recreational facilities include half court basketball court, volleyball court and swimming pool! Seller motivated. All offers considered. **Region:** Kaneohe **Neighborhood:** Windward Estates **Condition:** Average **Parking:** Open - 2 **Total Parking:** 2 **View:** Mountain **Frontage:** **Pool:** **Zoning:** 12 - A-2 Medium Density Apartme **Sale Conditions:** None **Schools:** , , * [Request Showing](#), [Photos](#), [History](#), [Maps](#), [Deed](#), [Watch List](#), [Tax Info](#)

DOM = Days on Market, Occ. = Occupancy, FL = Floor Number