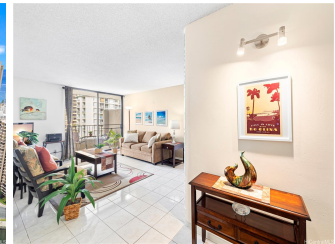


Leisure Heritage 311 Ohua Avenue Unit 501A, Honolulu 96815 * Leisure Heritage *

\$489,000 * Originally \$499,000

| | | |
|---|--|--------------------------------|
| Beds: 1 | MLS#: <u>202401748</u>, FS | Year Built: 1974 |
| Bath: 1/0 | Status: Active | Remodeled: 2023 |
| Living Sq. Ft.: 720 | List Date & DOM: 02-01-2024 & 106 | Total Parking: 1 |
| Land Sq. Ft.: 21,432 | Condition: Above Average | Assessed Value |
| Lanai Sq. Ft.: 77 | Frontage: | Building: \$348,100 |
| Sq. Ft. Other: 0 | Tax/Year: \$126/2023 | Land: \$85,600 |
| Total Sq. Ft. 797 | Neighborhood: Waikiki | Total: \$433,700 |
| Maint./Assoc. \$985 / \$0 | Flood Zone : Zone AE - Tool | Stories / CPR: / No |
| Parking: Assigned, Garage, Guest | Frontage: | |
| Zoning : X2 - Apartment Precinct | View: City, Garden, Mountain | |

Public Remarks: Embrace the Aloha at Leisure Heritage, a safe, immaculate, and well-cared-for building in the heart of Waikiki. This turn-key, fully furnished 1bd, 1ba condo offers the perfect blend of modern comfort and tropical charm. The unit features a spacious bedroom with ample natural light, providing a serene retreat after a day of exploring the vibrant surroundings. The open-concept living area seamlessly integrates the kitchen, dining, and living spaces, creating a welcoming atmosphere for both relaxation and entertainment. The kitchen boasts a new range/oven, and sleek countertops, making it a delightful space for culinary enthusiasts. Head to the Pool area to host a BBQ with friends or enjoy the views from the lanai. With the added convenience of one dedicated parking space, guest parking, and street parking, your island lifestyle is made even more convenient. Your new condo is just a minute away from world-renowned Waikiki Beach, The Shell amphitheater, upscale shopping, and a diverse array of dining options. Whether you're seeking the excitement of city life or the tranquility of the beach, this condo offers the perfect balance for your Hawaiian retreat. **Sale Conditions:** None **Schools:** [Jefferson](#), [Washington](#), [Kaimuki](#) * [Request Showing](#), [Photos](#), [History](#), [Maps](#), [Deed](#), [Watch List](#), [Tax Info](#)



| Address | Price | Bd & Bth | Living / Avg. | Land Avg. | Lanai | Occ. | FL | DOM |
|--------------------------------------|------------------|----------|---------------|---------------|-------|------|----|-----|
| 311 Ohua Avenue 501A | \$489,000 | 1 & 1/0 | 720 \$679 | 21,432 \$23 | 77 | 57% | 5 | 106 |

| Address | Tax Maint. Ass. | Assessed Land | Assessed Building | Assessed Total | Ratio | Year & Remodeled |
|--------------------------------------|---------------------|---------------|-------------------|----------------|-------|------------------|
| 311 Ohua Avenue 501A | \$126 \$985 \$0 | \$85,600 | \$348,100 | \$433,700 | 113% | 1974 & 2023 |

[311 Ohua Avenue 501A](#) - MLS#: [202401748](#) - Original price was \$499,000 - Embrace the Aloha at Leisure Heritage, a safe, immaculate, and well-cared-for building in the heart of Waikiki. This turn-key, fully furnished 1bd, 1ba condo offers the perfect blend of modern comfort and tropical charm. The unit features a spacious bedroom with ample natural light, providing a serene retreat after a day of exploring the vibrant surroundings. The open-concept living area seamlessly integrates the kitchen, dining, and living spaces, creating a welcoming atmosphere for both relaxation and entertainment. The kitchen boasts a new range/oven, and sleek countertops, making it a delightful space for culinary enthusiasts. Head to the Pool area to host a BBQ with friends or enjoy the views from the lanai. With the added convenience of one dedicated parking space, guest parking, and street parking, your island lifestyle is made even more convenient. Your new condo is just a minute away from world-renowned Waikiki Beach, The Shell amphitheater, upscale shopping, and a diverse array of dining options. Whether you're seeking the excitement of city life or the tranquility of the beach, this condo offers the perfect balance for your Hawaiian retreat. **Region:** Metro **Neighborhood:** Waikiki **Condition:** Above Average **Parking:** Assigned, Garage, Guest **Total Parking:** 1 **View:** City, Garden, Mountain **Frontage:** Pool: **Zoning:** X2 - Apartment Precinct **Sale Conditions:** None **Schools:** [Jefferson](#), [Washington](#), [Kaimuki](#) * [Request Showing](#), [Photos](#), [History](#), [Maps](#), [Deed](#), [Watch List](#), [Tax Info](#)

DOM = Days on Market, Occ. = Occupancy, FL = Floor Number