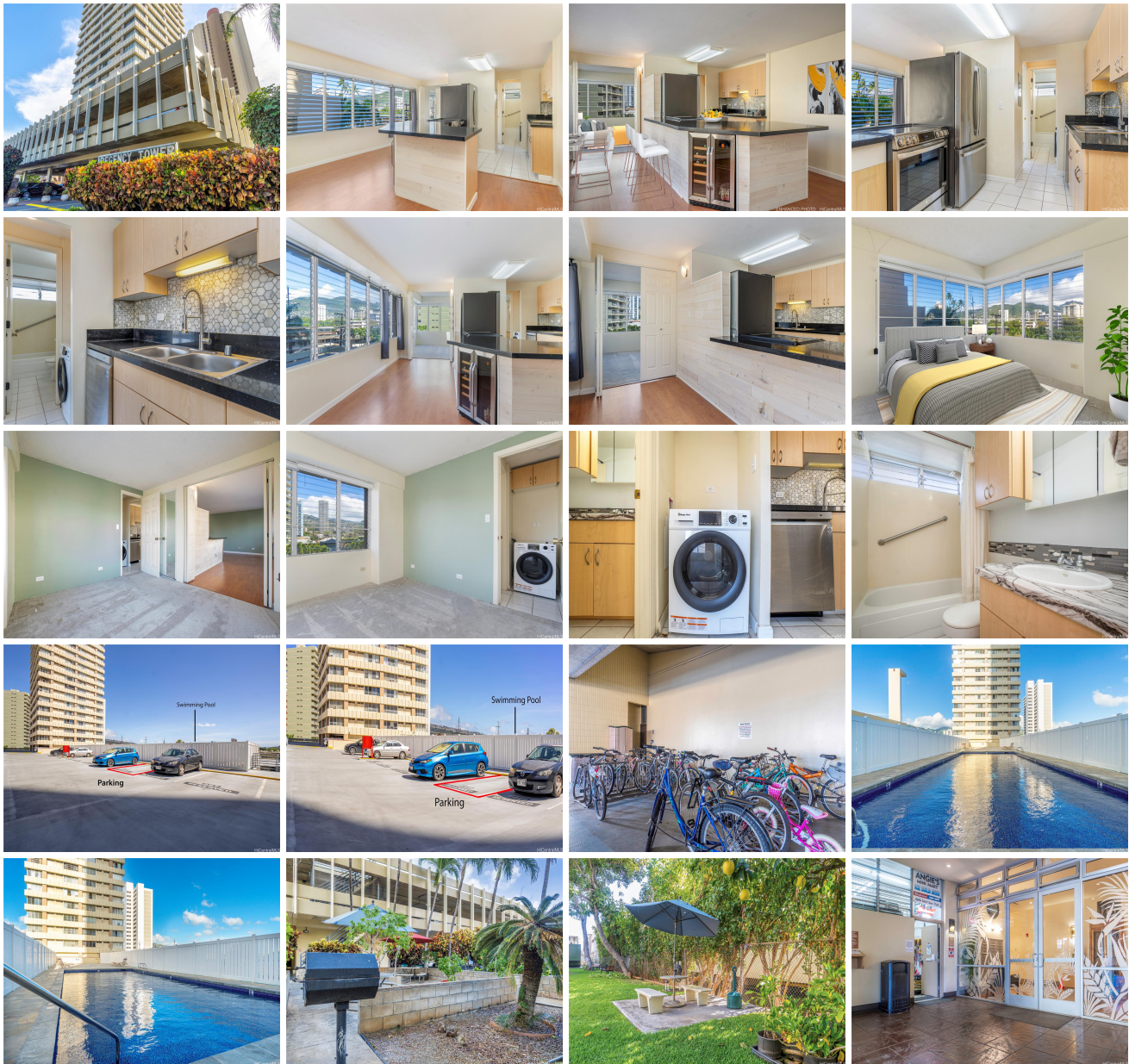
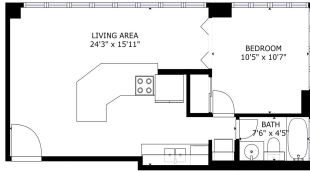


Regency Tower 2525 Date Street Unit 405, Honolulu 96826 * Regency Tower * \$395,000

Beds: 1	MLS#: <u>202401756</u>, FS	Year Built: 1974
Bath: 1/0	Status: Active	Remodeled: 2023
Living Sq. Ft.: 600	List Date & DOM: 02-21-2024 & 79	Total Parking: 1
Land Sq. Ft.: 53,143	Condition: Excellent	Assessed Value
Lanai Sq. Ft.: 0	Frontage: Other	Building: \$336,300
Sq. Ft. Other: 0	Tax/Year: \$110/2023	Land: \$41,600
Total Sq. Ft. 600	Neighborhood: Kapiolani	Total: \$377,900
Maint./Assoc. \$526 / \$0	Flood Zone : Zone X - Tool	Stories / CPR: 21+ / No
Parking: Assigned, Guest, Open - 1, Street	Frontage: Other	
Zoning : 13 - A-3 High Density Apartment	View: Mountain	

Public Remarks: Excellent opportunity! Well maintained and renovated 1 bedroom, 1 bathroom, 1 parking stall unit in the well-managed, Regency Tower. Fee Simple! 4th floor unit means easy access from the stairs with no waiting for elevators. Secure building with lots of guest parking. Beautifully renovated kitchen with new cabinets, solid countertops, stainless steel appliances including a built in beverage fridge. Lots of windows to allow cool breezes through the unit. Enjoy the amenities including the pool, sauna and BBQ's! Excellent location just minutes from shopping, bus lines, beaches and world famous Waikiki. Put this on your must see list! Some photos have been virtually enhanced. **Sale Conditions:** None **Schools:** , , *
[Request Showing](#), [Photos](#), [History](#), [Maps](#), [Deed](#), [Watch List](#), [Tax Info](#)





FLOOR 1

TOTAL: 482 sq. ft.
FLOOR 1: 482 sq. ft.

Matterport



Address	Price	Bd & Bth	Living / Avg.	Land Avg.	Lanai	Occ.	FL	DOM
2525 Date Street 405	\$395,000	1 & 1/0	600 \$658	53,143 \$7	0	44%	4	79

Address	Tax Maint. Ass.	Assessed Land	Assessed Building	Assessed Total	Ratio	Year & Remodeled
2525 Date Street 405	\$110 \$526 \$0	\$41,600	\$336,300	\$377,900	105%	1974 & 2023

[2525 Date Street 405](#) - MLS#: [202401756](#) - Excellent opportunity! Well maintained and renovated 1 bedroom, 1 bathroom, 1 parking stall unit in the well-managed, Regency Tower. Fee Simple! 4th floor unit means easy access from the stairs with no waiting for elevators. Secure building with lots of guest parking. Beautifully renovated kitchen with new cabinets, solid countertops, stainless steel appliances including a built in beverage fridge. Lots of windows to allow cool breezes through the unit. Enjoy the amenities including the pool, sauna and BBQ's! Excellent location just minutes from shopping, bus lines, beaches and world famous Waikiki. Put this on your must see list! Some photos have been virtually enhanced. **Region:** Metro **Neighborhood:** Kapiolani **Condition:** Excellent **Parking:** Assigned, Guest, Open - 1, Street **Total Parking:** 1 **View:** Mountain **Frontage:** Other **Pool:** **Zoning:** 13 - A-3 High Density Apartment **Sale Conditions:** None **Schools:** , , * [Request Showing](#), [Photos](#), [History](#), [Maps](#), [Deed](#), [Watch List](#), [Tax Info](#)

DOM = Days on Market, Occ. = Occupancy, FL = Floor Number