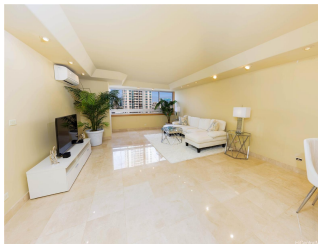
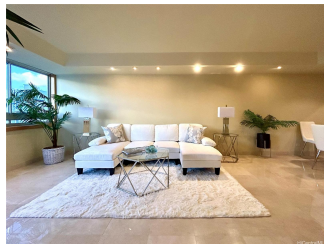


**Royal Court 920 Ward Avenue Unit 14A, Honolulu 96814 \* Royal Court \* \$499,500 \*****Originally \$579,000**

Beds: <b>1</b>	MLS#: <b>202402895, FS</b>	Year Built: <b>1970</b>
Bath: <b>1/0</b>	Status: <b>Active</b>	Remodeled: <b>2011</b>
Living Sq. Ft.: <b>929</b>	List Date & DOM: <b>02-01-2024 &amp; 102</b>	Total Parking: <b>1</b>
Land Sq. Ft.: <b>18,992</b>	Condition: <b>Excellent, Above Average</b>	<a href="#">Assessed Value</a>
Lanai Sq. Ft.: <b>0</b>	Frontage: <b>Other</b>	Building: <b>\$474,500</b>
Sq. Ft. Other: <b>0</b>	Tax/Year: <b>\$153/2023</b>	Land: <b>\$49,900</b>
Total Sq. Ft. <b>929</b>	Neighborhood: <b>Kakaako</b>	Total: <b>\$524,400</b>
Maint./Assoc. <b>\$820 / \$0</b>	<a href="#">Flood Zone</a> : <b>Zone X - Tool</b>	Stories / CPR: <b>15-20 / No</b>
Parking: <b>Assigned, Covered - 1, Garage, Secured Entry</b>	Frontage: <b>Other</b>	
<a href="#">Zoning</a> : <b>Kak - Kakaako Community Development Project</b>	View: <b>Cemetery, City, Other, Sunset</b>	

**Public Remarks:** HUGE PRICE REDUCTION! Large & Spacious end unit 1 bed, 1 bath (929 sq. ft. living space) with an enclosed lanai and 1 covered parking in the highly desired Royal Court. This stunningly renovated unit was converted from an original 2 bedroom 2 Baths (as reflected on TMK) to a large 1BR and 1 Bath (unique layout - it's separated) to create a larger, open living space. The popcorn ceiling has been removed. Great location - in the heart of Honolulu (near Downtown & Ala Moana), it offers easy access to an array of shopping, dining, & entertainment options. Explore the vibrant neighborhood, visit a show at the Blaisdell (right across the street!), easy walking distance to museums, Straub Hospital, Ward Village, and Kakaako. Ala Moana Beach & Mall nearby! Quiet side (west-facing) with lots of natural light. Pet-friendly building (Buyer to verify), secured entrance, gated garage, split AC, in-unit W/D, and swimming pool on property. No Guest Parking. Easy to show! Call listing agent and go! **Sale Conditions:** None **Schools:** , , \* [Request Showing](#), [Photos](#), [History](#), [Maps](#), [Deed](#), [Watch List](#), [Tax Info](#)



Address	Price	Bd & Bth	Living / Avg.	Land   Avg.	Lanai	Occ.	FL	DOM
<a href="#">920 Ward Avenue 14A</a>	<b>\$499,500</b>	1 & 1/0	929   \$538	18,992   \$26	0	50%	14	102

Address	Tax   Maint.   Ass.	Assessed Land	Assessed Building	Assessed Total	Ratio	Year & Remodeled
<a href="#">920 Ward Avenue 14A</a>	\$153   \$820   \$0	\$49,900	\$474,500	\$524,400	95%	1970 & 2011

[920 Ward Avenue 14A](#) - MLS#: [202402895](#) - Original price was \$579,000 - HUGE PRICE REDUCTION! Large & Spacious end unit 1 bed, 1 bath (929 sq. ft. living space) with an enclosed lanai and 1 covered parking in the highly desired Royal Court. This stunningly renovated unit was converted from an original 2 bedroom 2 Baths (as reflected on TMK) to a large 1BR and 1 Bath (unique layout - it's separated) to create a larger, open living space. The popcorn ceiling has been removed. Great location - in the heart of Honolulu (near Downtown & Ala Moana), it offers easy access to an array of shopping, dining, & entertainment options. Explore the vibrant neighborhood, visit a show at the Blaisdell (right across the street!), easy walking distance to museums, Straub Hospital, Ward Village, and Kakaako. Ala Moana Beach & Mall nearby! Quiet side (west-facing) with lots of natural light. Pet-friendly building (Buyer to verify), secured entrance, gated garage, split AC, in-unit W/D, and swimming pool on property. No Guest Parking. Easy to show! Call listing agent and go! **Region:** Metro **Neighborhood:** Kakaako **Condition:** Excellent, Above Average **Parking:** Assigned, Covered - 1, Garage, Secured Entry **Total Parking:** 1 **View:** Cemetery, City, Other, Sunset **Frontage:** Other **Pool:** **Zoning:** Kak - Kakaako Community Development Project **Sale Conditions:** None **Schools:** , , \* [Request Showing](#), [Photos](#), [History](#), [Maps](#), [Deed](#), [Watch List](#), [Tax Info](#)

DOM = Days on Market, Occ. = Occupancy, FL = Floor Number