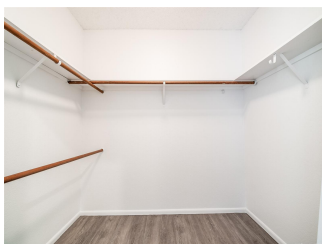
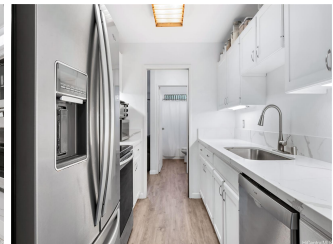


Windward Estate 46-078 Emepela Place Unit C203, Kaneohe 96744 * Windward Estate *

\$685,000 * Originally \$710,000

Beds: 2	MLS#: 202402928, FS	Year Built: 1982
Bath: 2/0	Status: Active	Remodeled: 2022
Living Sq. Ft.: 1,231	List Date & DOM: 03-11-2024 & 58	Total Parking: 1
Land Sq. Ft.: 0	Condition: Excellent, Above Average	Assessed Value
Lanai Sq. Ft.: 189	Frontage:	Building: \$508,800
Sq. Ft. Other: 0	Tax/Year: \$134/2024	Land: \$190,200
Total Sq. Ft. 1,420	Neighborhood: Windward Estates	Total: \$699,000
Maint./Assoc. \$819 / \$0	Flood Zone : Zone X - Tool	Stories / CPR: Two, Split Level / No
Parking: Assigned, Open - 1	Frontage:	
Zoning : 12 - A-2 Medium Density Apartme	View: Mountain	

Public Remarks: Imagine relaxing and enjoying majestic views of the Ko'olau mountains from your new home! Welcome home to Windward Estates in Kaneohe. This clean split-level townhome features two very spacious bedrooms, two full baths, expansive vaulted ceilings, and three lanais! Need storage? Here you will find six closets (including walk-in in the primary bedroom) plus attic space. The recent 2022 renovations included hardwood cabinets, quartz countertops, stainless steel appliances, luxury vinyl flooring, new bathroom vanities and fixtures, and fresh paint throughout. Amenities galore add even more to the feeling of being in a true community. Enjoy the pool, hot tub, pickleball and tennis courts, basketball court, playground, dog park, community garden, and clubhouse. One reserved parking plus ample street parking close by in the neighborhood. Convenient location near Target, Safeway, and Long's and easy access to H-3, Pali, and Likelike. Close to schools, bus line, and a quick drive to MCBH. The maintenance fee includes cable, internet, hot water, water, and sewer. This home is truly move-in ready! **Sale Conditions:** None **Schools:** , , * [Request Showing](#), [Photos](#), [History](#), [Maps](#), [Deed](#), [Watch List](#), [Tax Info](#)





Address	Price	Bd & Bth	Living / Avg.	Land Avg.	Lanai	Occ.	FL	DOM
46-078 Emepela Place C203	\$685,000	2 & 2/0	1,231 \$556	0 \$inf	189	71%	2	58

Address	Tax Maint. Ass.	Assessed Land	Assessed Building	Assessed Total	Ratio	Year & Remodeled
46-078 Emepela Place C203	\$134 \$819 \$0	\$190,200	\$508,800	\$699,000	98%	1982 & 2022

[46-078 Emepela Place C203](#) - MLS#: [202402928](#) - Original price was \$710,000 - Imagine relaxing and enjoying majestic views of the Ko'olau mountains from your new home! Welcome home to Windward Estates in Kaneohe. This clean split-level townhome features two very spacious bedrooms, two full baths, expansive vaulted ceilings, and three lanais! Need storage? Here you will find six closets (including walk-in in the primary bedroom) plus attic space. The recent 2022 renovations included hardwood cabinets, quartz countertops, stainless steel appliances, luxury vinyl flooring, new bathroom vanities and fixtures, and fresh paint throughout. Amenities galore add even more to the feeling of being in a true community. Enjoy the pool, hot tub, pickleball and tennis courts, basketball court, playground, dog park, community garden, and clubhouse. One reserved parking plus ample street parking close by in the neighborhood. Convenient location near Target, Safeway, and Long's and easy access to H-3, Pali, and Likelike. Close to schools, bus line, and a quick drive to MCBH. The maintenance fee includes cable, internet, hot water, water, and sewer. This home is truly move-in ready! **Region:** Kaneohe **Neighborhood:** Windward Estates **Condition:** Excellent, Above Average **Parking:** Assigned, Open - 1 **Total Parking:** 1 **View:** Mountain **Frontage:** **Pool:** **Zoning:** 12 - A-2 Medium Density Apartme **Sale Conditions:** None **Schools:** , , * [Request Showing](#), [Photos](#), [History](#), [Maps](#), [Deed](#), [Watch List](#), [Tax Info](#)

DOM = Days on Market, Occ. = Occupancy, FL = Floor Number