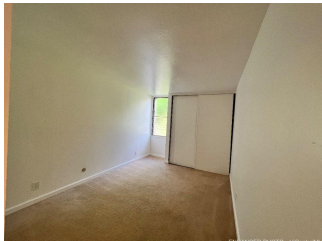
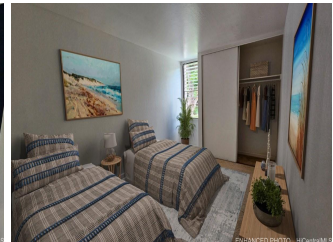


**Makaha Valley Pltn 84-664 Ala Mahiku Street Unit 175A, Waianae 96792 \* Makaha Valley**

**Pltn \* \$336,200 \* Originally \$376,000**

Beds: <b>2</b>	MLS#: <b><u>202402935</u>, FS</b>	Year Built: <b>1975</b>
Bath: <b>1/0</b>	Status: <b>Active</b>	Remodeled: <b>1980</b>
Living Sq. Ft.: <b>815</b>	List Date & DOM: <b>02-02-2024 &amp; 97</b>	Total Parking: <b>1</b>
Land Sq. Ft.: <b>1,222,729</b>	Condition: <b>Excellent, Above Average</b>	<a href="#">Assessed Value</a>
Lanai Sq. Ft.: <b>120</b>	Frontage: <b>Other</b>	Building: <b>\$209,800</b>
Sq. Ft. Other: <b>0</b>	Tax/Year: <b>\$75/2023</b>	Land: <b>\$48,400</b>
Total Sq. Ft. <b>935</b>	Neighborhood: <b>Makaha</b>	Total: <b>\$258,200</b>
Maint./Assoc. <b>\$786 / \$0</b>	<a href="#">Flood Zone</a> : <b>Zone D - Tool</b>	Stories / CPR: <b>Three / No</b>
Parking: <b>Open - 1</b>	Frontage: <b>Other</b>	
<a href="#">Zoning</a> : <b>12 - A-2 Medium Density Apartme</b>	View: <b>Mountain</b>	

**Public Remarks:** PRICE IMPROVEMENT! Awesome 2 Bedroom Condo in Popular Makaha Valley Plantation with Spacious Lanai. Beautiful 2 bed, 1 bath first Floor unit w/private entrance, in Makaha Valley Plantation Beautifully landscaped with mango & palm trees & natural light. Shady with breezy relaxing atmosphere. The Plantations offers many amenities for residents to enjoy, including pools, tennis courts, spas, basketball courts, on site mailboxes gated community w/24 hour security & Car Wash. These facilities provide opportunities for recreation & relaxation within the community. In close proximity to the beach, a fantastic feature for beach enthusiasts & those who enjoy the coastal lifestyle. Newer Appliances in the kitchen & freshly painted bedrooms, bathroom and kitchen are likely to enhance the overall appeal and functionality of this modern space. This 2 bedroom unit in tropical setting appears as desirable option if seeking a bright, airy and well-equipped living space, in a scenic location. Portable bedroom & living room ac's & flat screen tv included. Pickle ball available. \$5000 sellers credit for flooring or Closing Cost. Make Offer! "One or more photos are enhanced or virtually Staged" **Sale Conditions:** None **Schools:** , , \* [Request Showing](#), [Photos](#), [History](#), [Maps](#), [Deed](#), [Watch List](#), [Tax Info](#)





Address	Price	Bd & Bth	Living / Avg.	Land   Avg.	Lanai	Occ.	FL	DOM
<a href="#">84-664 Ala Mahiku Street 175A</a>	<b>\$336,200</b>	2 & 1/0	815   \$413	1,222,729   \$0	120	34%	1	97

Address	Tax   Maint.   Ass.	Assessed Land	Assessed Building	Assessed Total	Ratio	Year & Remodeled
<a href="#">84-664 Ala Mahiku Street 175A</a>	\$75   \$786   \$0	\$48,400	\$209,800	\$258,200	130%	1975 & 1980

[84-664 Ala Mahiku Street 175A](#) - MLS#: [202402935](#) - Original price was \$376,000 - PRICE IMPROVEMENT! Awesome 2 Bedroom Condo in Popular Makaha Valley Plantation with Spacious Lanai. Beautiful 2 bed, 1 bath first Floor unit w/private entrance, in Makaha Valley Plantation Beautifully landscaped with mango & palm trees & natural light. Shady with breezy relaxing atmosphere. The Plantations offers many amenities for residents to enjoy, including pools, tennis courts, spas, basketball courts, on site mailboxes gated community w/24 hour security & Car Wash. These facilities provide opportunities for recreation & relaxation within the community. In close proximity to the beach, a fantastic feature for beach enthusiasts & those who enjoy the coastal lifestyle. Newer Appliances in the kitchen & freshly painted bedrooms, bathroom and kitchen are likely to enhance the overall appeal and functionality of this modern space. This 2 bedroom unit in tropical setting appears as desirable option if seeking a bright, airy and well-equipped living space, in a scenic location. Portable bedroom & living room ac's & flat screen tv included. Pickle ball available. \$5000 sellers credit for flooring or Closing Cost. Make Offer! "One or more photos are enhanced or virtually Staged" **Region:** Leeward **Neighborhood:** Makaha **Condition:** Excellent, Above Average **Parking:** Open - 1 **Total Parking:** 1 **View:** Mountain **Frontage:** Other **Pool:** **Zoning:** 12 - A-2 Medium Density Apartme **Sale Conditions:** None **Schools:** , , \* [Request Showing](#), [Photos](#), [History](#), [Maps](#), [Deed](#), [Watch List](#), [Tax Info](#)

DOM = Days on Market, Occ. = Occupancy, FL = Floor Number