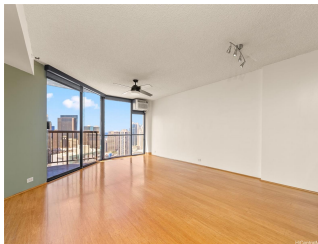


## Honolulu Tower 60 N Beretania Street Unit 3010, Honolulu 96817 \* Honolulu Tower \*

**\$479,000 \* Originally \$495,000**

Beds: <b>2</b>	MLS#: <b>202402956, FS</b>	Year Built: <b>1982</b>
Bath: <b>2/0</b>	Status: <b>Active Under Contract</b>	Remodeled: <b>2015</b>
Living Sq. Ft.: <b>1,064</b>	List Date & DOM: <b>02-02-2024 &amp; 89</b>	Total Parking: <b>1</b>
Land Sq. Ft.: <b>74,488</b>	Condition: <b>Above Average</b>	<a href="#">Assessed Value</a>
Lanai Sq. Ft.: <b>58</b>	Frontage:	Building: <b>\$429,800</b>
Sq. Ft. Other: <b>0</b>	Tax/Year: <b>\$184/2023</b>	Land: <b>\$61,200</b>
Total Sq. Ft. <b>1,122</b>	Neighborhood: <b>Chinatown</b>	Total: <b>\$491,000</b>
Maint./Assoc. <b>\$1,474 / \$0</b>	<a href="#">Flood Zone</a> : <b>Zone X - Tool</b>	Stories / CPR: / <b>No</b>
Parking: <b>Assigned, Covered - 1, Garage, Guest, Secured Entry</b>	Frontage:	
<a href="#">Zoning</a> : <b>34 - BMX-4 Central Business Mix</b>	View: <b>City, Ocean, Sunset</b>	

**Public Remarks:** There's a reason why Honolulu Tower is one of Oahu's "go to" condos for those looking for convenience, security, value and a pet-friendly place that welcomes your beloved companion. This spacious high floor unit offers Ocean views beyond Aloha Tower to the Pacific, pastel skies and golden hues at sunset and twinkling City lights at night. The ever-changing panorama can be seen from almost every room from floor-to-ceiling picture windows and from the covered lanai. One of the building's best features is its convenient location in the Financial District, within minutes of some of THE BEST restaurants in Honolulu which feature James Beard award winning chefs and cultural events and shows at the historic Hawaii Theatre and the exciting new Downtown Art Center (DAC). Other features include an open kitchen with breakfast bar, air conditioning throughout, walk-in pantry or storage, a flexible guest bedroom with louvered doors that open to the living area, bamboo floors in the living area and more. A wide range of amenities include pool, whirlpool, several barbecue stations surrounded by tropical landscaping, lounge, library and bike storage. Easy to show, see and sell! Great new price! **Sale Conditions:** None **Schools:** , , \* [Request Showing](#), [Photos](#), [History](#), [Maps](#), [Deed](#), [Watch List](#), [Tax Info](#)



Address	Price	Bd & Bth	Living / Avg.	Land   Avg.	Lanai	Occ.	FL	DOM
<a href="#">60 N Beretania Street 3010</a>	<b>\$479,000</b>	2 & 2/0	1,064   \$450	74,488   \$6	58	64%	30	89

Address	Tax   Maint.   Ass.	Assessed Land	Assessed Building	Assessed Total	Ratio	Year & Remodeled
<a href="#">60 N Beretania Street 3010</a>	\$184   \$1,474   \$0	\$61,200	\$429,800	\$491,000	98%	1982 & 2015

[60 N Beretania Street 3010](#) - MLS#: [202402956](#) - Original price was \$495,000 - There's a reason why Honolulu Tower is one of Oahu's "go to" condos for those looking for convenience, security, value and a pet-friendly place that welcomes your beloved companion. This spacious high floor unit offers Ocean views beyond Aloha Tower to the Pacific, pastel skies and golden hues at sunset and twinkling City lights at night. The ever-changing panorama can be seen from almost every room from floor-to-ceiling picture windows and from the covered lanai. One of the building's best features is its convenient location in the Financial District, within minutes of some of THE BEST restaurants in Honolulu which feature James Beard award winning chefs and cultural events and shows at the historic Hawaii Theatre and the exciting new Downtown Art Center (DAC). Other features include an open kitchen with breakfast bar, air conditioning throughout, walk-in pantry or storage, a flexible guest bedroom with louvered doors that open to the living area, bamboo floors in the living area and more. A wide range of amenities include pool, whirlpool, several barbecue stations surrounded by tropical landscaping, lounge, library and bike storage. Easy to show, see and sell! Great new price! **Region:** Metro **Neighborhood:** Chinatown **Condition:** Above Average **Parking:** Assigned, Covered - 1, Garage, Guest, Secured Entry **Total Parking:** 1 **View:** City, Ocean, Sunset **Frontage:** Pool: **Zoning:** 34 - BMX-4 Central Business Mix **Sale Conditions:** None **Schools:** , , \* [Request Showing](#), [Photos](#), [History](#), [Maps](#), [Deed](#), [Watch List](#), [Tax Info](#)

DOM = Days on Market, Occ. = Occupancy, FL = Floor Number