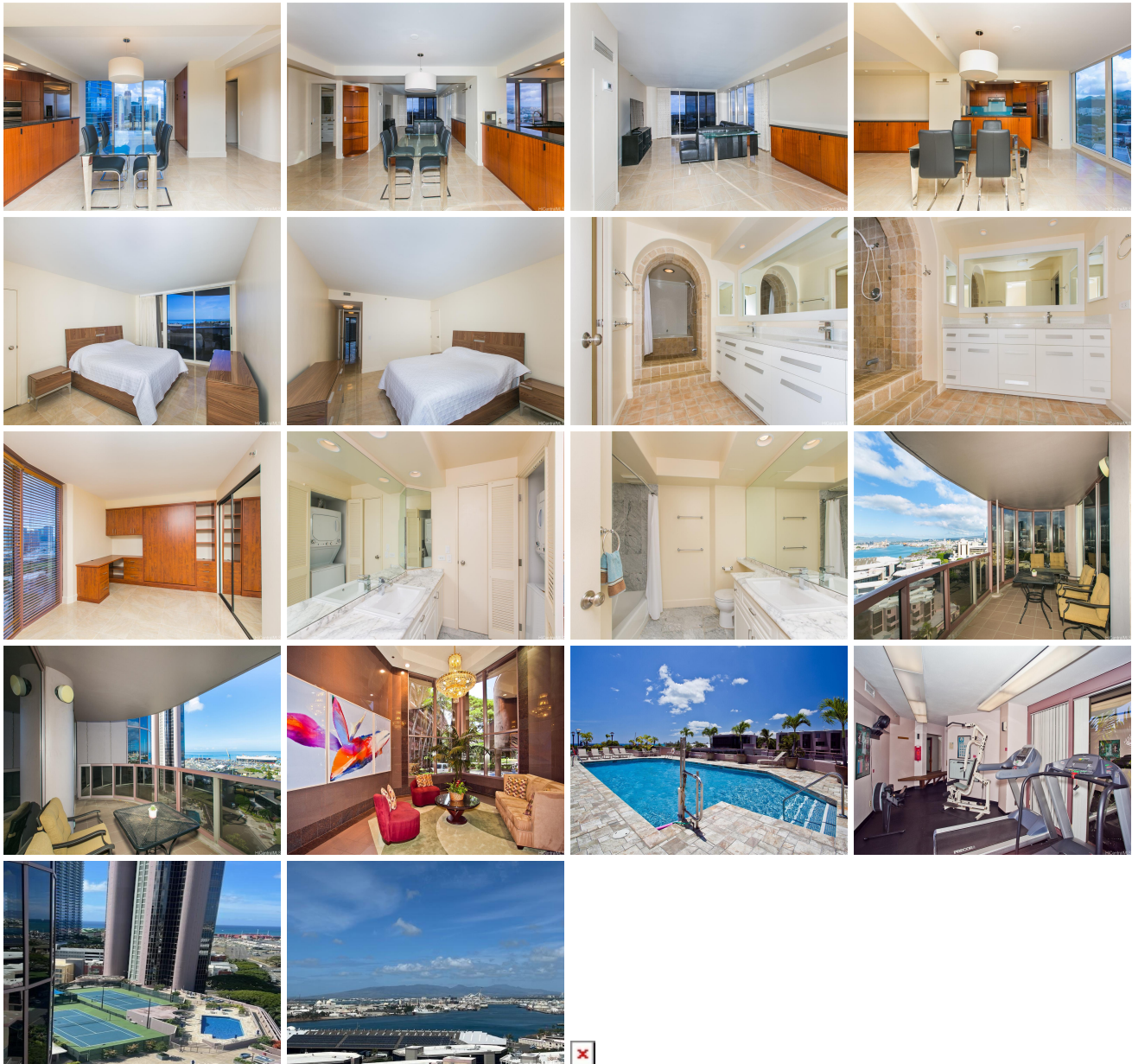


One Waterfront Tower 425 South Street Unit 1704, Honolulu 96813 * One Waterfront Tower * \$949,000 * Originally \$969,000

Beds: 2	MLS#: <u>202402975</u>, FS	Year Built: 1989
Bath: 2/0	Status: Active	Remodeled: 2013
Living Sq. Ft.: 1,470	List Date & DOM: 03-01-2024 & 70	Total Parking: 2
Land Sq. Ft.: 106,548	Condition: Excellent	Assessed Value
Lanai Sq. Ft.: 155	Frontage: Other	Building: \$732,500
Sq. Ft. Other: 0	Tax/Year: \$241/2024	Land: \$92,300
Total Sq. Ft. 1,625	Neighborhood: Kakaako	Total: \$824,800
Maint./Assoc. \$1,975 / \$0	Flood Zone : Zone X - <u>Tool</u>	Stories / CPR: 21+ / No
Parking: Covered - 2, Guest, Secured Entry	Frontage: Other	
Zoning : Kak - Kakaako Community Development Project	View: City, Coastline, Mountain, Ocean, Sunset	

Public Remarks: GREAT OPPORTUNITY, AND GREAT VALUE in Kaka'ako awaits you with the purchase of this 2 bedroom, 2 bathroom, 2 titled parking condominium at ONE WATERFRONT TOWER. Tastefully remodeled in 2013, this handsome condo has a beautiful kitchen, and gorgeous ceramic tile floors throughout the unit. A great view disposition, with spectacular harbor, ocean, mountain and city views. A large lanai for entertaining your guest and enjoying a sunset beverage. Situated at the far wet end of Kaka'ako, you can easily stroll Salt and Restaurant Row, and Whole Foods and Ward Village are nearby too. Unit is priced to sell! **Sale Conditions:** None **Schools:** [Royal](#), [Keelikolani](#), [Mckinley](#) * [Request Showing](#), [Photos](#), [History](#), [Maps](#), [Deed](#), [Watch List](#), [Tax Info](#)



Address	Price	Bd & Bth	Living / Avg.	Land Avg.	Lanai	Occ.	FL	DOM
425 South Street 1704	\$949,000	2 & 2/0	1,470 \$646	106,548 \$9	155	58%	17	70

Address	Tax Maint. Ass.	Assessed Land	Assessed Building	Assessed Total	Ratio	Year & Remodeled
425 South Street 1704	\$241 \$1,975 \$0	\$92,300	\$732,500	\$824,800	115%	1989 & 2013

[425 South Street 1704](#) - MLS#: [202402975](#) - Original price was \$969,000 - GREAT OPPORTUNITY, AND GREAT VALUE in Kaka'ako awaits you with the purchase of this 2 bedroom, 2 bathroom, 2 titled parking condominium at ONE WATERFRONT TOWER. Tastefully remodeled in 2013, this handsome condo has a beautiful kitchen, and gorgeous ceramic tile floors throughout the unit. A great view disposition, with spectacular harbor, ocean, mountain and city views. A large lanai for entertaining your guest and enjoying a sunset beverage. Situated at the far wet end of Kaka'ako, you can easily stroll Salt and Restaurant Row, and Whole Foods and Ward Village are nearby too. Unit is priced to sell! **Region:** Metro **Neighborhood:** Kakaako **Condition:** Excellent **Parking:** Covered - 2, Guest, Secured Entry **Total Parking:** 2 **View:** City, Coastline, Mountain, Ocean, Sunset **Frontage:** Other **Pool:** **Zoning:** Kak - Kakaako Community Development Project **Sale Conditions:** None **Schools:** [Royal](#), [Keelikolani](#), [Mckinley](#) * [Request Showing](#), [Photos](#), [History](#), [Maps](#), [Deed](#), [Watch List](#), [Tax Info](#)

DOM = Days on Market, Occ. = Occupancy, FL = Floor Number