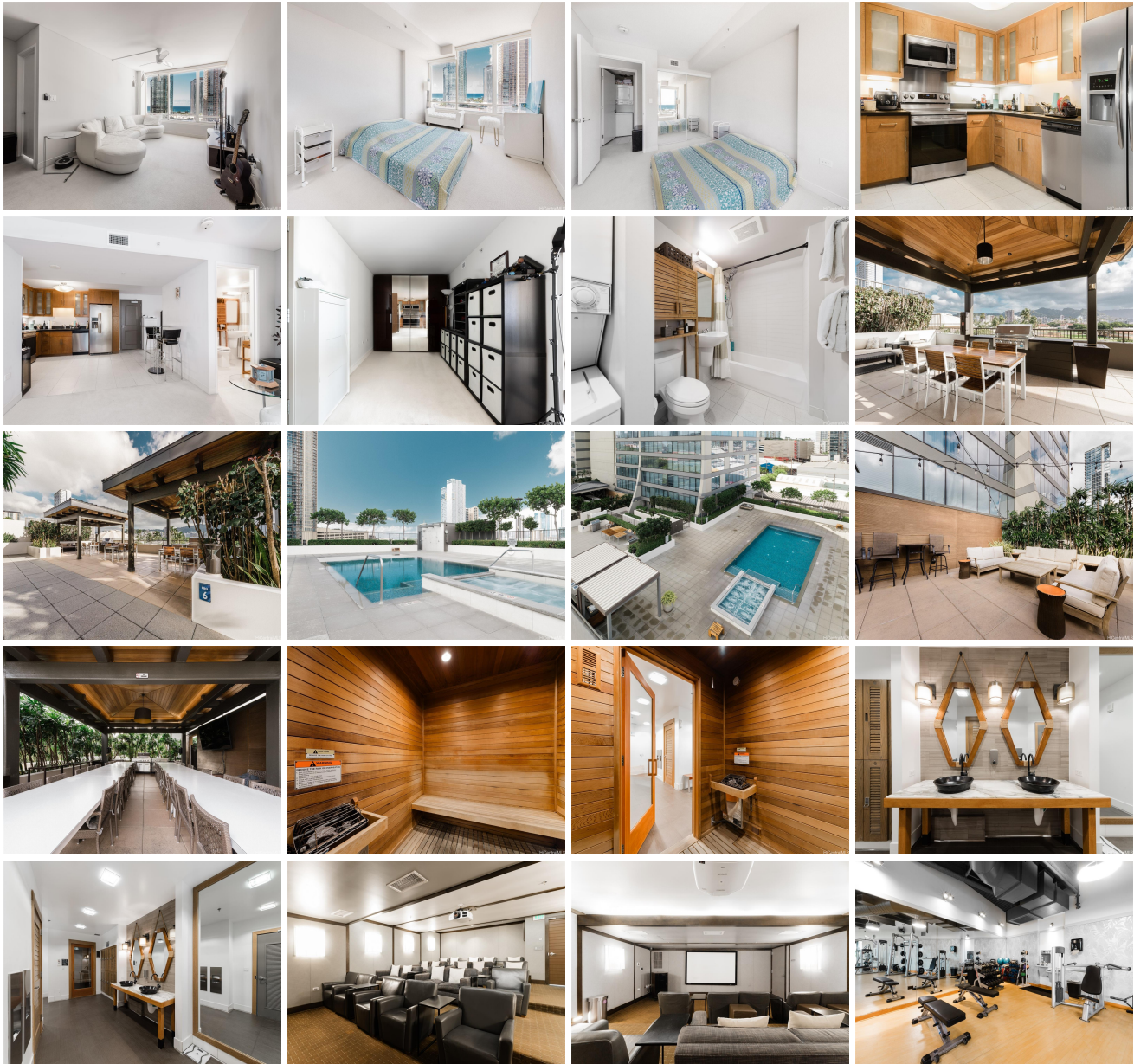


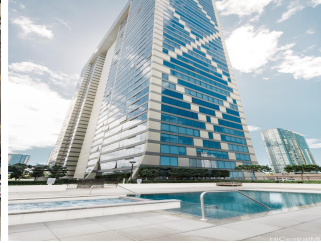
## **Pacifica Honolulu 1009 Kapiolani Boulevard Unit 2009, Honolulu 96814 \* Pacifica Honolulu**

**\* \$755,000**

Beds: <b>1</b>	MLS#: <b><u>202402984</u>, FS</b>	Year Built: <b>2011</b>
Bath: <b>1/0</b>	Status: <b>Active</b>	Remodeled:
Living Sq. Ft.: <b>727</b>	List Date & DOM: <b>02-14-2024 &amp; 87</b>	Total Parking: <b>1</b>
Land Sq. Ft.: <b>0</b>	Condition: <b>Above Average</b>	<a href="#">Assessed Value</a>
Lanai Sq. Ft.: <b>0</b>	Frontage:	Building: <b>\$692,900</b>
Sq. Ft. Other: <b>0</b>	Tax/Year: <b>\$187/2023</b>	Land: <b>\$48,100</b>
Total Sq. Ft. <b>727</b>	Neighborhood: <b>Kakaako</b>	Total: <b>\$741,000</b>
Maint./Assoc. <b>\$816 / \$0</b>	<a href="#">Flood Zone</a> : <b>Zone X - Tool</b>	Stories / CPR: <b>21+ / No</b>
Parking: <b>Assigned, Covered - 1, Secured Entry</b>	Frontage:	
<a href="#">Zoning</a> : <b>Kak - Kakaako Community Development Project</b>	View: <b>City, Ocean, Sunset</b>	

**Public Remarks:** Make your new home here at the Pacifica Honolulu. This beautiful 1 bed, 1 bath apartment is on the 20th floor and in the middle of all the action! Want to enjoy the ocean? Ala Moana Beach is close by. Want to shop or take in a movie? Ward village is a double blocks away. Want to take in a show or concert? The Neal Blaisdell Center is across the street. Want some fine dining? Chef Chai's and Daroku Sushi are on the first floor! This amazing apartment comes with ocean and city views, access to a pool, hot tub, saunas, bbq pits, lounging area and private gym. There is even a "pet friendly park" for you animal lovers out there! This Unit also comes with its own dedicated cover parking in a secure parking structure. Don't wait Make an appointment to visit today! **Sale Conditions:** None **Schools:** [Kaahumanu](#), [Stevenson](#), [Mckinley](#) \* [Request Showing](#), [Photos](#), [History](#), [Maps](#), [Deed](#), [Watch List](#), [Tax Info](#)





Address	Price	Bd & Bth	Living / Avg.	Land   Avg.	Lanai	Occ.	FL	DOM
<a href="#">1009 Kapiolani Boulevard 2009</a>	<a href="#">\$755,000</a>	1 & 1/0	727   \$1,039	0   \$inf	0	55%	20	87

Address	Tax   Maint.   Ass.	Assessed Land	Assessed Building	Assessed Total	Ratio	Year & Remodeled
<a href="#">1009 Kapiolani Boulevard 2009</a>	\$187   \$816   \$0	\$48,100	\$692,900	\$741,000	102%	2011 & NA

[1009 Kapiolani Boulevard 2009](#) - MLS#: [202402984](#) - Make your new home here at the Pacifica Honolulu. This beautiful 1 bed, 1 bath apartment is on the 20th floor and in the middle of all the action! Want to enjoy the ocean? Ala Moana Beach is close by. Want to shop or take in a movie? Ward village is a double blocks away. Want to take in a show or concert? The Neal Blaisdell Center is across the street. Want some fine dining? Chef Chai's and Daroku Sushi are on the first floor! This amazing apartment comes with ocean and city views, access to a pool, hot tub, saunas, bbq pits, lounging area and private gym. There is even a "pet friendly park" for you animal lovers out there! This Unit also comes with its own dedicated cover parking in a secure parking structure. Don't wait Make an appointment to visit today! **Region:** Metro **Neighborhood:** Kakaako **Condition:** Above Average **Parking:** Assigned, Covered - 1, Secured Entry **Total Parking:** 1 **View:** City, Ocean, Sunset **Frontage:** Pool: **Zoning:** Kak - Kakaako Community Development Project **Sale Conditions:** None **Schools:** [Kaahumanu](#), [Stevenson](#), [Mckinley](#) \* [Request Showing](#), [Photos](#), [History](#), [Maps](#), [Deed](#), [Watch List](#), [Tax Info](#)

DOM = Days on Market, Occ. = Occupancy, FL = Floor Number