

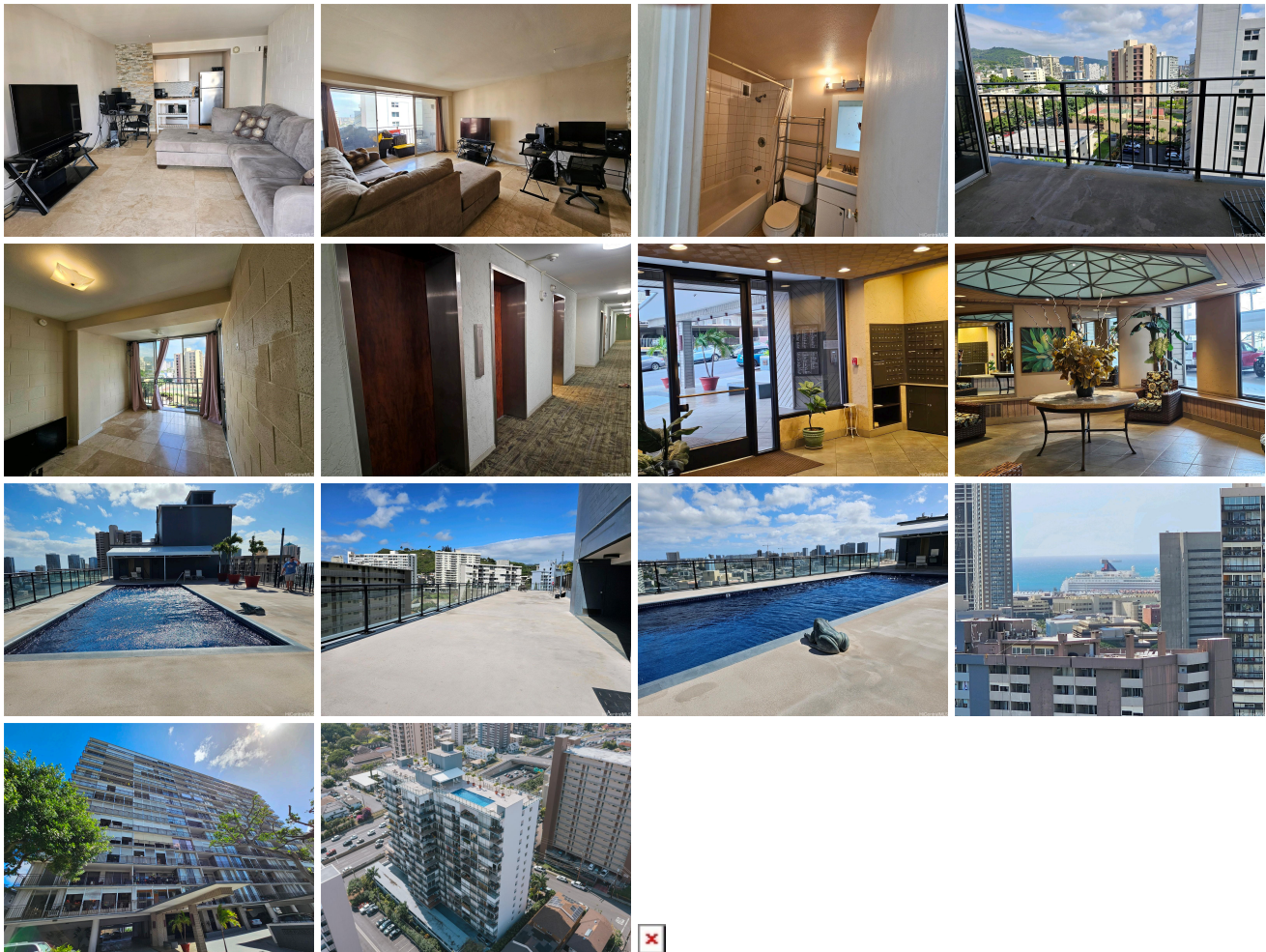
## **Town House 1415 Victoria Street Unit 903, Honolulu 96822 \* Town House \* \$358,000 \***

**Originally \$378,000**

Beds: <b>1</b>	MLS#: <b><u>202403003</u>, FS</b>	Year Built: <b>1961</b>
Bath: <b>1/0</b>	Status: <b>Active Under Contract</b>	Remodeled:
Living Sq. Ft.: <b>534</b>	List Date & DOM: <b>02-03-2024 &amp; 69</b>	Total Parking: <b>1</b>
Land Sq. Ft.: <b>30,013</b>	Condition: <b>Above Average</b>	<a href="#">Assessed Value</a>
Lanai Sq. Ft.: <b>0</b>	Frontage: <b>Other</b>	Building: <b>\$342,500</b>
Sq. Ft. Other: <b>0</b>	Tax/Year: <b>\$106/2023</b>	Land: <b>\$27,500</b>
Total Sq. Ft. <b>534</b>	Neighborhood: <b>Punchbowl Area</b>	Total: <b>\$370,000</b>
Maint./Assoc. <b>\$527 / \$0</b>	<a href="#">Flood Zone</a> : <b>Zone X - Tool</b>	Stories / CPR: <b>8-14 / No</b>
Parking: <b>Covered - 1, Guest</b>	Frontage: <b>Other</b>	
<a href="#">Zoning</a> : <b>12 - A-2 Medium Density Apartme</b>	View: <b>City, Coastline, Diamond Head, Ocean, Other, Sunrise, Sunset</b>	

**Public Remarks:** BRING ALL OFFERS "Substantial Price Drop" (New Price Under Assessed Value) Vibrant 1-bedroom condo boasts a lively atmosphere with contemporary decor and ample natural light. The open living space seamlessly connects to a well-appointed kitchen, creating an inviting area for both relaxation and entertaining. The bedroom offers a cozy retreat, and the full bathroom is conveniently located. The open kitchen offers granite countertops and stainless steel appliances. There is plenty of storage in the 2 large closets in the entry way. This unit and it's covered lanai provides a spectacular view, allowing residents to enjoy stunning panoramas from many angles, capturing cityscapes, scenic landscapes, and urban skylines throughout the year. Laundry is just a couple doors away. Beautiful large pool located on the rooftop with incredible views and a super large deck area. A perfect building in an ideal location can truly enhance your living experience. Whether it's for convenience, aesthetics, or amenities, having the right combination makes a significant difference. Enjoy your perfect space !

**Sale Conditions:** None **Schools:** [Lincoln](#), [Stevenson](#), [Roosevelt](#) \* [Request Showing](#), [Photos](#), [History](#), [Maps](#), [Deed](#), [Watch List](#), [Tax Info](#)



Address	Price	Bd & Bth	Living / Avg.	Land   Avg.	Lanai	Occ.	FL	DOM
<a href="#">1415 Victoria Street 903</a>	<b><u>\$358,000</u></b>	1 & 1/0	534   \$670	30,013   \$12	0	55%	9	69

Address	Tax   Maint.   Ass.	Assessed Land	Assessed Building	Assessed Total	Ratio	Year & Remodeled
<a href="#">1415 Victoria Street 903</a>	\$106   \$527   \$0	\$27,500	\$342,500	\$370,000	97%	1961 & NA

[1415 Victoria Street 903](#) - MLS#: [202403003](#) - Original price was \$378,000 - BRING ALL OFFERS "Substantial Price Drop" (New Price Under Assessed Value) Vibrant 1-bedroom condo boasts a lively atmosphere with contemporary decor and ample natural light. The open living space seamlessly connects to a well-appointed kitchen, creating an inviting area for both relaxation and entertaining. The bedroom offers a cozy retreat, and the full bathroom is conveniently located. The open kitchen offers granite countertops and stainless steel appliances. There is plenty of storage in the 2 large closets in the entry way. This unit and it's covered lanai provides a spectacular view, allowing residents to enjoy stunning panoramas from many angles, capturing cityscapes, scenic landscapes, and urban skylines throughout the year. Laundry is just a couple doors away. Beautiful large pool located on the rooftop with incredible views and a super large deck area. A perfect building in an ideal location can truly enhance your living experience. Whether it's for convenience, aesthetics, or amenities, having the right combination makes a significant difference. Enjoy your perfect space ! **Region:** Metro **Neighborhood:** Punchbowl Area **Condition:** Above Average **Parking:** Covered - 1, Guest **Total Parking:** 1 **View:** City, Coastline, Diamond Head, Ocean, Other, Sunrise, Sunset **Frontage:** Other **Pool:** **Zoning:** 12 - A-2 Medium Density Apartme **Sale Conditions:** None **Schools:** [Lincoln](#), [Stevenson](#), [Roosevelt](#) \* [Request Showing](#), [Photos](#), [History](#), [Maps](#), [Deed](#), [Watch List](#), [Tax Info](#)

DOM = Days on Market, Occ. = Occupancy, FL = Floor Number