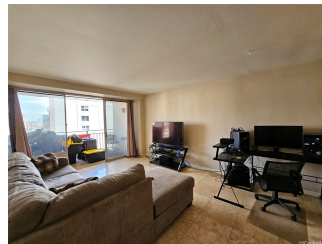
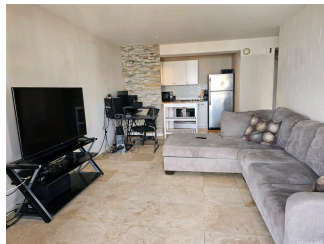


Town House 1415 Victoria Street Unit 903, Honolulu 96822 * Town House * \$358,000 *

Originally \$378,000

Beds: 1	MLS#: 202403003, FS	Year Built: 1961
Bath: 1/0	Status: Active Under Contract	Remodeled:
Living Sq. Ft.: 534	List Date & DOM: 02-03-2024 & 69	Total Parking: 1
Land Sq. Ft.: 30,013	Condition: Above Average	Assessed Value
Lanai Sq. Ft.: 0	Frontage: Other	Building: \$342,500
Sq. Ft. Other: 0	Tax/Year: \$106/2023	Land: \$27,500
Total Sq. Ft. 534	Neighborhood: Punchbowl Area	Total: \$370,000
Maint./Assoc. \$527 / \$0	Flood Zone : Zone X - Tool	Stories / CPR: 8-14 / No
Parking: Covered - 1, Guest	Frontage: Other	
Zoning : 12 - A-2 Medium Density Apartme	View: City, Coastline, Diamond Head, Ocean, Other, Sunrise, Sunset	

Public Remarks: BRING ALL OFFERS "Substantial Price Drop" (New Price Under Assessed Value) Vibrant 1-bedroom condo boasts a lively atmosphere with contemporary decor and ample natural light. The open living space seamlessly connects to a well-appointed kitchen, creating an inviting area for both relaxation and entertaining. The bedroom offers a cozy retreat, and the full bathroom is conveniently located. The open kitchen offers granite countertops and stainless steel appliances. There is plenty of storage in the 2 large closets in the entry way. This unit and it's covered lanai provides a spectacular view, allowing residents to enjoy stunning panoramas from many angles, capturing cityscapes, scenic landscapes, and urban skylines throughout the year. Laundry is just a couple doors away. Beautiful large pool located on the rooftop with incredible views and a super large deck area. A perfect building in an ideal location can truly enhance your living experience. Whether it's for convenience, aesthetics, or amenities, having the right combination makes a significant difference. Enjoy your perfect space !
Sale Conditions: None **Schools:** [Lincoln](#), [Stevenson](#), [Roosevelt](#) * [Request Showing](#), [Photos](#), [History](#), [Maps](#), [Deed](#), [Watch List](#), [Tax Info](#)



Address	Price	Bd & Bth	Living / Avg.	Land Avg.	Lanai	Occ.	FL	DOM
1415 Victoria Street 903	\$358,000	1 & 1/0	534 \$670	30,013 \$12	0	55%	9	69

Address	Tax Maint. Ass.	Assessed Land	Assessed Building	Assessed Total	Ratio	Year & Remodeled
1415 Victoria Street 903	\$106 \$527 \$0	\$27,500	\$342,500	\$370,000	97%	1961 & NA

[1415 Victoria Street 903](#) - MLS#: [202403003](#) - Original price was \$378,000 - BRING ALL OFFERS "Substantial Price Drop" (New Price Under Assessed Value) Vibrant 1-bedroom condo boasts a lively atmosphere with contemporary decor and ample natural light. The open living space seamlessly connects to a well-appointed kitchen, creating an inviting area for both relaxation and entertaining. The bedroom offers a cozy retreat, and the full bathroom is conveniently located. The open kitchen offers granite countertops and stainless steel appliances. There is plenty of storage in the 2 large closets in the entry way. This unit and it's covered lanai provides a spectacular view, allowing residents to enjoy stunning panoramas from many angles, capturing cityscapes, scenic landscapes, and urban skylines throughout the year. Laundry is just a couple doors away. Beautiful large pool located on the rooftop with incredible views and a super large deck area. A perfect building in an ideal location can truly enhance your living experience. Whether it's for convenience, aesthetics, or amenities, having the right combination makes a significant difference. Enjoy your perfect space ! **Region:** Metro **Neighborhood:** Punchbowl Area **Condition:** Above Average **Parking:** Covered - 1, Guest **Total Parking:** 1 **View:** City, Coastline, Diamond Head, Ocean, Other, Sunrise, Sunset **Frontage:** Other **Pool:** **Zoning:** 12 - A-2 Medium Density Apartme **Sale Conditions:** None **Schools:** [Lincoln](#), [Stevenson](#), [Roosevelt](#) * [Request Showing](#), [Photos](#), [History](#), [Maps](#), [Deed](#), [Watch List](#), [Tax Info](#)

DOM = Days on Market, Occ. = Occupancy, FL = Floor Number