

Windsor The 343 Hobron Lane Unit M101, Honolulu 96815 * Windsor The * \$895,000 *

Originally \$920,000

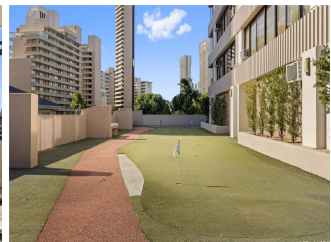
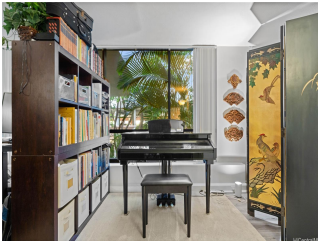
Beds: 2	MLS#: 202403012, FS	Year Built: 1986
Bath: 2/1	Status: Active	Remodeled:
Living Sq. Ft.: 1,475	List Date & DOM: 02-21-2024 & 79	Total Parking: 1
Land Sq. Ft.: 0	Condition: Above Average	Assessed Value
Lanai Sq. Ft.: 0	Frontage:	Building: \$951,100
Sq. Ft. Other: 0	Tax/Year: \$286/2024	Land: \$148,200
Total Sq. Ft. 1,475	Neighborhood: Waikiki	Total: \$1,099,300
Maint./Assoc. \$1,828 / \$0	Flood Zone : Zone AE - Tool	Stories / CPR: One / No
Parking: Assigned, Covered - 1, Guest, Street	Frontage:	
Zoning : X2 - Apartment Precinct	View: Garden	

Public Remarks: Experience luxury at The Windsor Waikiki condo, a jewel nestled in the heart of Honolulu. A blend of style and comfort, it features two spacious bedrooms and two and a half bathrooms. Unique in its floor plan, it offers an array of amenities including a 24/7 gym, a recreation room, a BBQ area, a walking path, lounges, and meeting areas. Positioned on the second floor, it ensures resident security with 24-hour on-site services. It offers serene garden-style views from the living room, kitchen, and bedrooms, adding to the tranquility within bustling Waikiki. A nearby dedicated parking stall adds convenience along with several guest parking stalls for friends to visit. The cherry on top? The sky deck boasts panoramic views of the cityscape, including the iconic Diamond Head and Waikiki Beach. This condo is an excellent investment opportunity, with an assumable VA loan at a rate of 2.25%. **Sale Conditions:** Subject To Repl. Property **Schools:** , , * [Request Showing](#), [Photos](#), [History](#), [Maps](#), [Deed](#), [Watch List](#), [Tax Info](#)



TOTAL 1475 SQ. FT.
FOOTER 1: 1475 SQ. FT.

Matterport





Address	Price	Bd & Bth	Living / Avg.	Land Avg.	Lanai	Occ.	FL	DOM
343 Hobron Lane M101	\$895,000	2 & 2/1	1,475 \$607	0 \$inf	0	40%	2	79

Address	Tax Maint. Ass.	Assessed Land	Assessed Building	Assessed Total	Ratio	Year & Remodeled
343 Hobron Lane M101	\$286 \$1,828 \$0	\$148,200	\$951,100	\$1,099,300	81%	1986 & NA

[343 Hobron Lane M101](#) - MLS#: [202403012](#) - Original price was \$920,000 - Experience luxury at The Windsor Waikiki condo, a jewel nestled in the heart of Honolulu. A blend of style and comfort, it features two spacious bedrooms and two and a half bathrooms. Unique in its floor plan, it offers an array of amenities including a 24/7 gym, a recreation room, a BBQ area, a walking path, lounges, and meeting areas. Positioned on the second floor, it ensures resident security with 24-hour on-site services. It offers serene garden-style views from the living room, kitchen, and bedrooms, adding to the tranquility within bustling Waikiki. A nearby dedicated parking stall adds convenience along with several guest parking stalls for friends to visit. The cherry on top? The sky deck boasts panoramic views of the cityscape, including the iconic Diamond Head and Waikiki Beach. This condo is an excellent investment opportunity, with an assumable VA loan at a rate of 2.25%. **Region:** Metro **Neighborhood:** Waikiki **Condition:** Above Average **Parking:** Assigned, Covered - 1, Guest, Street **Total Parking:** 1 **View:** Garden **Frontage:** **Pool:** **Zoning:** X2 - Apartment Precinct **Sale Conditions:** Subject To Repl. Property **Schools:** , , * [Request Showing](#), [Photos](#), [History](#), [Maps](#), [Deed](#), [Watch List](#), [Tax Info](#)

DOM = Days on Market, Occ. = Occupancy, FL = Floor Number