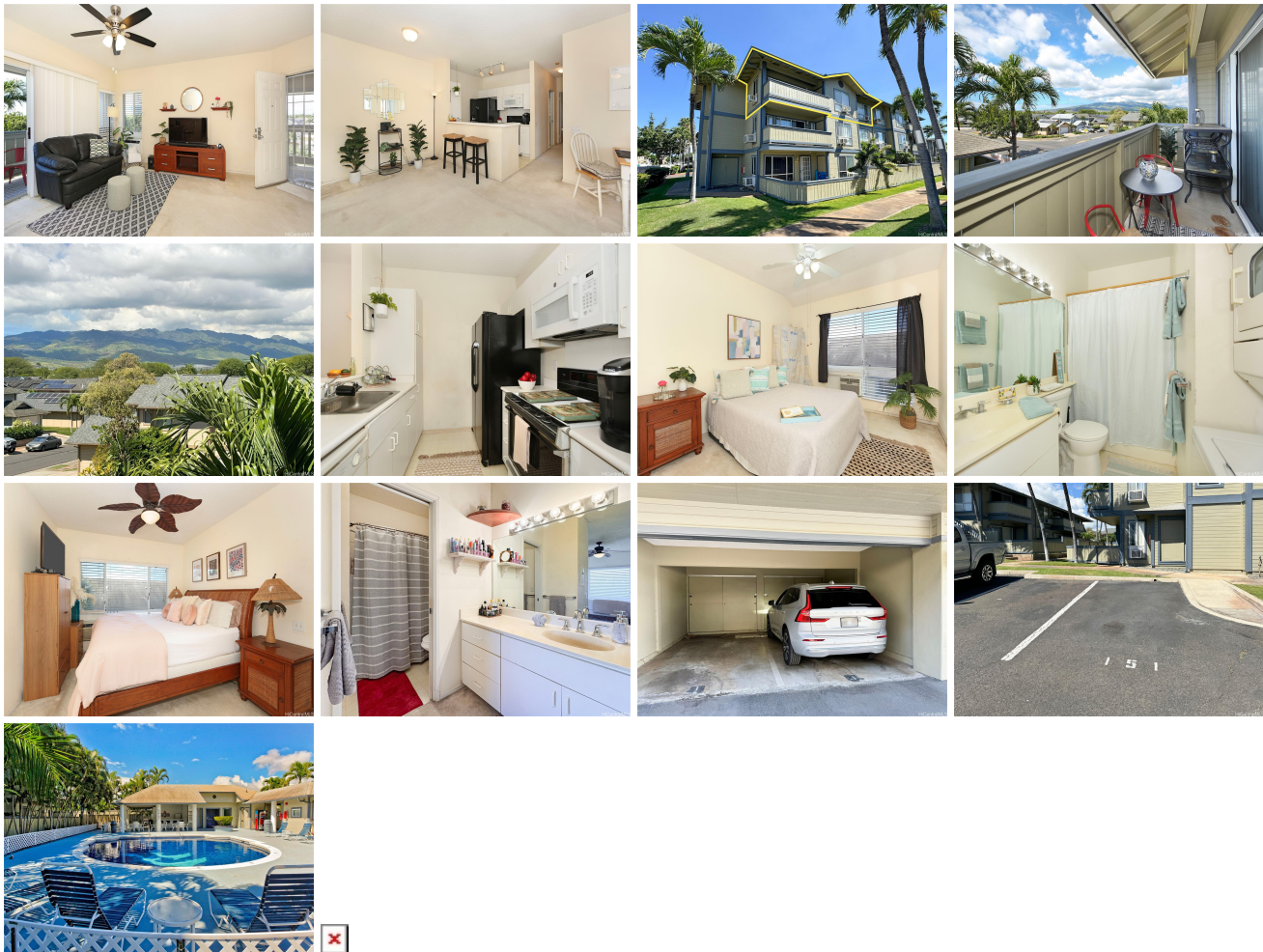


Sun Rise 91-225 Hanapouli Circle Unit 33J, Ewa Beach 96706 * Sun Rise * \$520,000

Beds: 2	MLS#: 202403032, FS	Year Built: 1993
Bath: 2/0	Status: Active	Remodeled:
Living Sq. Ft.: 811	List Date & DOM: 02-15-2024 & 91	Total Parking: 2
Land Sq. Ft.: 0	Condition: Average	Assessed Value
Lanai Sq. Ft.: 60	Frontage: Other	Building: \$380,600
Sq. Ft. Other: 0	Tax/Year: \$58/2024	Land: \$116,000
Total Sq. Ft. 871	Neighborhood: Ewa	Total: \$496,600
Maint./Assoc. \$437 / \$50	Flood Zone : Zone D - Tool	Stories / CPR: Three / No
Parking: Assigned, Carport, Covered - 1, Guest, Open - 1	Frontage: Other	
Zoning : 11 - A-1 Low Density Apartment	View: Mountain, Other, Sunset	

Public Remarks: This lovingly cared for home is a corner end unit situated on the top floor with only 2 units per floor. Tree top and mountain views from a generous lanai space offers privacy and tranquility. This unit is your private oasis with 2 spacious bedrooms, 2 full bathrooms, and 2 assigned parking stalls (one covered with storage unit located in building next to stairs to unit, and another uncovered at entrance to building). Community amenities include a private pool, BBQ and recreation area, and ample guest parking. Lots of eateries, shopping, and golf courses are conveniently located nearby. Customize this home to your heart's desire for the perfect retreat. **Sale Conditions:** None **Schools:** , , * [Request Showing](#), [Photos](#), [History](#), [Maps](#), [Deed](#), [Watch List](#), [Tax Info](#)



Address	Price	Bd & Bth	Living / Avg.	Land Avg.	Lanai	Occ.	FL	DOM
91-225 Hanapouli Circle 33J	\$520,000	2 & 2/0	811 \$641	0 \$inf	60	55%	3	91

Address	Tax Maint. Ass.	Assessed Land	Assessed Building	Assessed Total	Ratio	Year & Remodeled
91-225 Hanapouli Circle 33J	\$58 \$437 \$50	\$116,000	\$380,600	\$496,600	105%	1993 & NA

[91-225 Hanapouli Circle 33J](#) - MLS#: [202403032](#) - This lovingly cared for home is a corner end unit situated on the top floor with only 2 units per floor. Tree top and mountain views from a generous lanai space offers privacy and tranquility. This unit is your private oasis with 2 spacious bedrooms, 2 full bathrooms, and 2 assigned parking stalls (one covered with storage unit located in building next to stairs to unit, and another uncovered at entrance to building). Community amenities include a private pool, BBQ and recreation area, and ample guest parking. Lots of eateries, shopping, and golf courses are conveniently located nearby. Customize this home to your heart's desire for the perfect retreat. **Region:** Ewa Plain
Neighborhood: Ewa **Condition:** Average **Parking:** Assigned, Carport, Covered - 1, Guest, Open - 1 **Total Parking:** 2
View: Mountain, Other, Sunset **Frontage:** Other **Pool:** **Zoning:** 11 - A-1 Low Density Apartment **Sale Conditions:** None
Schools: , , * [Request Showing](#), [Photos](#), [History](#), [Maps](#), [Deed](#), [Watch List](#), [Tax Info](#)

DOM = Days on Market, Occ. = Occupancy, FL = Floor Number