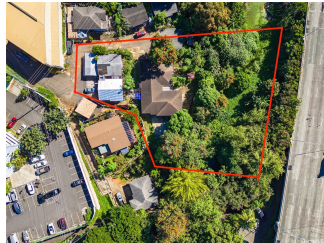


## **735 Kamehameha Highway, Pearl City 96782 \* \* \$1,830,000 \* Originally \$2,250,000**

Beds: <b>10</b>	MLS#: <b>202403141, FS</b>	Year Built: <b>1964</b>
Bath: <b>4/1</b>	Status: <b>Active</b>	Remodeled: <b>1979</b>
Living Sq. Ft.: <b>3,471</b>	List Date & DOM: <b>02-13-2024 &amp; 95</b>	Total Parking: <b>6</b>
Land Sq. Ft.: <b>39,372</b>	Condition: <b>Above Average, Average</b>	<a href="#">Assessed Value</a>
Lanai Sq. Ft.: <b>0</b>	Frontage:	Building: <b>\$469,000</b>
Sq. Ft. Other: <b>0</b>	Tax/Year: <b>\$432/2023</b>	Land: <b>\$1,010,600</b>
Total Sq. Ft. <b>3,471</b>	Neighborhood: <b>Navy-federal</b>	Total: <b>\$1,479,600</b>
Maint./Assoc. <b>\$0 / \$0</b>	<a href="#">Flood Zone</a> : <b>Zone D - Tool</b>	Stories / CPR: <b>One, Two / No</b>
Parking: <b>3 Car+</b>	Frontage:	
<a href="#">Zoning</a> : <b>05 - R-5 Residential District</b>	View: <b>Garden, Other</b>	

**Public Remarks:** All offers considered. Ideal for investors, developers, or anyone eager to tap into immediate income potential, this property presents a unique opportunity. With expansive land, it opens the door to a multitude of development prospects—available renderings showcase the potential. Distinguished by its natural spring, the estate offers a sustainable water source, perfect for pioneering agricultural projects or serene residential settings. Currently, it includes two 2-bedroom, 1-bathroom homes and a 6-bedroom, 3-bathroom duplex, all generating consistent monthly revenue. Equipped with 2 water meters and 3 electric meters, such a find on Oahu, Hawaii, is exceptionally rare. Tenants are currently month to month **Sale Conditions:** None **Schools:** , , \* [Request Showing](#), [Photos](#), [History](#), [Maps](#), [Deed](#), [Watch List](#), [Tax Info](#)



Address	Price	Bd & Bth	Living / Avg.	Land   Avg.	Lanai	Occ.	FL	DOM
<a href="#">735 Kamehameha Highway</a>	<b>\$1,830,000</b>	10 & 4/1	3,471   \$527	39,372   \$46	0	0%	0	95

Address	Tax   Maint.   Ass.	Assessed Land	Assessed Building	Assessed Total	Ratio	Year & Remodeled
<a href="#">735 Kamehameha Highway</a>	\$432   \$0   \$0	\$1,010,600	\$469,000	\$1,479,600	124%	1964 & 1979

[735 Kamehameha Highway](#) - MLS#: [202403141](#) - Original price was \$2,250,000 - All offers considered. Ideal for investors, developers, or anyone eager to tap into immediate income potential, this property presents a unique opportunity. With expansive land, it opens the door to a multitude of development prospects—available renderings showcase the potential. Distinguished by its natural spring, the estate offers a sustainable water source, perfect for pioneering agricultural projects or serene residential settings. Currently, it includes two 2-bedroom, 1-bathroom homes and a 6-bedroom, 3-bathroom duplex, all generating consistent monthly revenue. Equipped with 2 water meters and 3 electric meters, such a find on Oahu, Hawaii, is exceptionally rare. Tenants are currently month to month **Region:** Pearl City **Neighborhood:** Navy-federal **Condition:** Above Average, Average **Parking:** 3 Car+ **Total Parking:** 6 **View:** Garden, Other **Frontage:** **Pool:** None **Zoning:** 05 - R-5 Residential District **Sale Conditions:** None **Schools:** , , \* [Request Showing](#), [Photos](#), [History](#), [Maps](#), [Deed](#), [Watch List](#), [Tax Info](#)

DOM = Days on Market, Occ. = Occupancy, FL = Floor Number