

Capitol Place 1200 Queen Emma Street Unit 2401, Honolulu 96813 * Capitol Place *

\$888,000

Beds: **2**

MLS#: **[202403195](#), FS**

Year Built: **2008**

Bath: **2/0**

Status: **Active Under Contract**

Remodeled:

Living Sq. Ft.: **1,049**

List Date & DOM: **02-26-2024 & 46**

Total Parking: **2**

Land Sq. Ft.: **0**

Condition: **Above Average**

[Assessed Value](#)

Lanai Sq. Ft.: **34**

Frontage:

Building: **\$785,300**

Sq. Ft. Other: **0**

Tax/Year: **\$225/2023**

Land: **\$84,700**

Total Sq. Ft. **1,083**

Neighborhood: **Downtown**

Total: **\$870,000**

Maint./Assoc. **\$1,228 / \$0**

[Flood Zone](#): **Zone X - Tool**

Stories / CPR: **21+ / No**

Assigned, Covered - 2, Garage,

Parking: **Guest, Secured Entry, Street, Tandem**

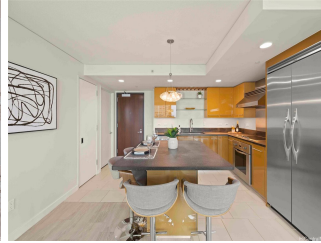
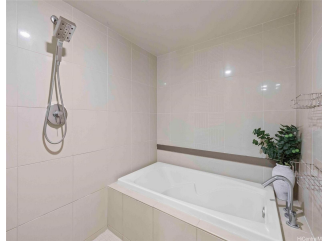
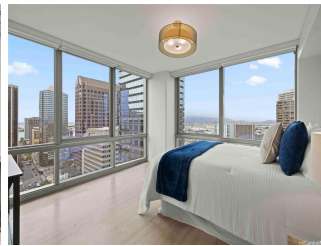
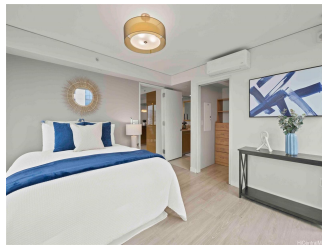
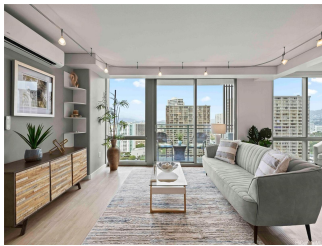
Frontage:

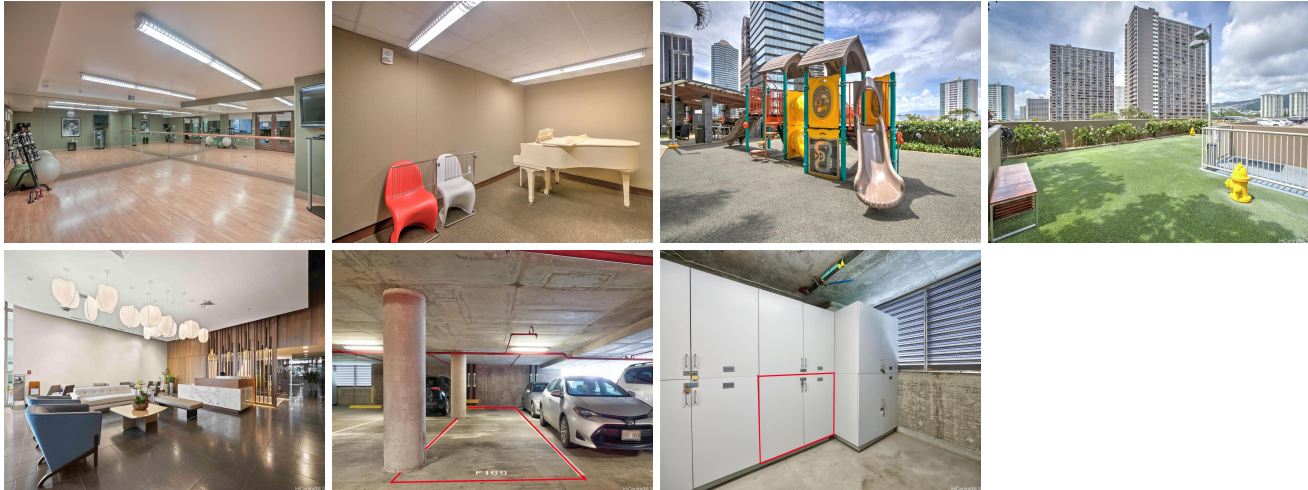
[Zoning](#): **34 - BMX-4 Central Business Mix**

View: **City, Mountain, Ocean**

Public Remarks: Located in the heart of Downtown Honolulu, Capitol Place offers everything you will need with all the conveniences at your doorstep. Welcome home to this corner/end unit, well-maintained, 2-bedroom condominium with 2 full bathrooms, open layout perfect for entertaining, Viking stainless steel appliances, floor-to-ceiling windows, motorized sun shades, split AC units, a lanai to enjoy some fresh air, views from the living room and both bedrooms, closet system in the primary, washer/dryer in the unit, 2 parking stalls (tandem) and a storage locker. This is a very pet-friendly building with resort-like amenities, such as heated infinity pool, jacuzzi, kiddie pool, fitness center with men and women locker rooms, yoga studio, theater/media room, two music rooms (one with a piano), recreation/party room w/ kitchenette, BBQ cabanas, children's playground, dog park, 4 EV charging stalls, Resident Manager, 24/7 security & video surveillance. Proximity to freeway on/off ramps, medical facilities, CBD -central business district, grocery stores, an array of dining options and entertainment venues. Don't miss out, schedule your private showing today! 3D Virtual Dollhouse available. **Sale**

Conditions: None **Schools:** [Royal](#), [Keelikolani](#), [Mckinley](#) * [Request Showing](#), [Photos](#), [History](#), [Maps](#), [Deed](#), [Watch List](#), [Tax Info](#)





Address	Price	Bd & Bth	Living / Avg.	Land Avg.	Lanai	Occ.	FL	DOM
1200 Queen Emma Street 2401	\$888,000	2 & 2/0	1,049 \$847	0 \$inf	34	61%	24	46

Address	Tax Maint. Ass.	Assessed Land	Assessed Building	Assessed Total	Ratio	Year & Remodeled
1200 Queen Emma Street 2401	\$225 \$1,228 \$0	\$84,700	\$785,300	\$870,000	102%	2008 & NA

[1200 Queen Emma Street 2401](#) - MLS#: [202403195](#) - Located in the heart of Downtown Honolulu, Capitol Place offers everything you will need with all the conveniences at your doorstep. Welcome home to this corner/end unit, well-maintained, 2-bedroom condominium with 2 full bathrooms, open layout perfect for entertaining, Viking stainless steel appliances, floor-to-ceiling windows, motorized sun shades, split AC units, a lanai to enjoy some fresh air, views from the living room and both bedrooms, closet system in the primary, washer/dryer in the unit, 2 parking stalls (tandem) and a storage locker. This is a very pet-friendly building with resort-like amenities, such as heated infinity pool, jacuzzi, kiddie pool, fitness center with men and women locker rooms, yoga studio, theater/media room, two music rooms (one with a piano), recreation/party room w/ kitchenette, BBQ cabanas, children's playground, dog park, 4 EV charging stalls, Resident Manager, 24/7 security & video surveillance. Proximity to freeway on/off ramps, medical facilities, CBD -central business district, grocery stores, an array of dining options and entertainment venues. Don't miss out, schedule your private showing today! 3D Virtual Dollhouse available. **Region:** Metro **Neighborhood:** Downtown **Condition:** Above Average **Parking:** Assigned, Covered - 2, Garage, Guest, Secured Entry, Street, Tandem **Total Parking:** 2 **View:** City, Mountain, Ocean **Frontage:** Pool: **Zoning:** 34 - BMX-4 Central Business Mix **Sale Conditions:** None **Schools:** [Royal](#), [Keelikolani](#), [Mckinley](#) * [Request Showing](#), [Photos](#), [History](#), [Maps](#), [Deed](#), [Watch List](#), [Tax Info](#)

DOM = Days on Market, Occ. = Occupancy, FL = Floor Number