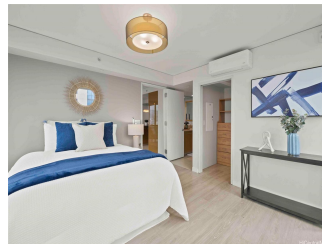
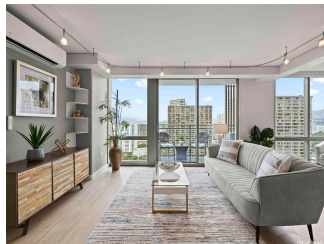


Capitol Place 1200 Queen Emma Street Unit 2401, Honolulu 96813 * Capitol Place ***\$888,000**

Beds: 2	MLS#: 202403195, FS	Year Built: 2008
Bath: 2/0	Status: Active Under Contract	Remodeled:
Living Sq. Ft.: 1,049	List Date & DOM: 02-26-2024 & 46	Total Parking: 2
Land Sq. Ft.: 0	Condition: Above Average	Assessed Value
Lanai Sq. Ft.: 34	Frontage:	Building: \$785,300
Sq. Ft. Other: 0	Tax/Year: \$225/2023	Land: \$84,700
Total Sq. Ft. 1,083	Neighborhood: Downtown	Total: \$870,000
Maint./Assoc. \$1,228 / \$0	Flood Zone : Zone X - Tool	Stories / CPR: 21+ / No
Assigned, Covered - 2, Garage,		
Parking: Guest, Secured Entry, Street, Tandem		Frontage:
Zoning : 34 - BMX-4 Central Business Mix		View: City, Mountain, Ocean

Public Remarks: Located in the heart of Downtown Honolulu, Capitol Place offers everything you will need with all the conveniences at your doorstep. Welcome home to this corner/end unit, well-maintained, 2-bedroom condominium with 2 full bathrooms, open layout perfect for entertaining, Viking stainless steel appliances, floor-to-ceiling windows, motorized sun shades, split AC units, a lanai to enjoy some fresh air, views from the living room and both bedrooms, closet system in the primary, washer/dryer in the unit, 2 parking stalls (tandem) and a storage locker. This is a very pet-friendly building with resort-like amenities, such as heated infinity pool, jacuzzi, kiddie pool, fitness center with men and women locker rooms, yoga studio, theater/media room, two music rooms (one with a piano), recreation/party room w/ kitchenette, BBQ cabanas, children's playground, dog park, 4 EV charging stalls, Resident Manager, 24/7 security & video surveillance. Proximity to freeway on/off ramps, medical facilities, CBD -central business district, grocery stores, an array of dining options and entertainment venues. Don't miss out, schedule your private showing today! 3D Virtual Dollhouse available. **Sale**

Conditions: None **Schools:** [Royal](#), [Keelikolani](#), [Mckinley](#) * [Request Showing](#), [Photos](#), [History](#), [Maps](#), [Deed](#), [Watch List](#), [Tax Info](#)



Address	Price	Bd & Bth	Living / Avg.	Land Avg.	Lanai	Occ.	FL	DOM
1200 Queen Emma Street 2401	\$888,000	2 & 2/0	1,049 \$847	0 \$inf	34	61%	24	46

Address	Tax Maint. Ass.	Assessed Land	Assessed Building	Assessed Total	Ratio	Year & Remodeled
1200 Queen Emma Street 2401	\$225 \$1,228 \$0	\$84,700	\$785,300	\$870,000	102%	2008 & NA

[1200 Queen Emma Street 2401](#) - MLS#: [202403195](#) - Located in the heart of Downtown Honolulu, Capitol Place offers everything you will need with all the conveniences at your doorstep. Welcome home to this corner/end unit, well-maintained, 2-bedroom condominium with 2 full bathrooms, open layout perfect for entertaining, Viking stainless steel appliances, floor-to-ceiling windows, motorized sun shades, split AC units, a lanai to enjoy some fresh air, views from the living room and both bedrooms, closet system in the primary, washer/dryer in the unit, 2 parking stalls (tandem) and a storage locker. This is a very pet-friendly building with resort-like amenities, such as heated infinity pool, jacuzzi, kiddie pool, fitness center with men and women locker rooms, yoga studio, theater/media room, two music rooms (one with a piano), recreation/party room w/ kitchenette, BBQ cabanas, children's playground, dog park, 4 EV charging stalls, Resident Manager, 24/7 security & video surveillance. Proximity to freeway on/off ramps, medical facilities, CBD -central business district, grocery stores, an array of dining options and entertainment venues. Don't miss out, schedule your private showing today! 3D Virtual Dollhouse available. **Region:** Metro **Neighborhood:** Downtown **Condition:** Above Average **Parking:** Assigned, Covered - 2, Garage, Guest, Secured Entry, Street, Tandem **Total Parking:** 2 **View:** City, Mountain, Ocean **Frontage:** Pool: **Zoning:** 34 - BMX-4 Central Business Mix **Sale Conditions:** None **Schools:** [Royal](#), [Keelikolani](#), [Mckinley](#) * [Request Showing](#), [Photos](#), [History](#), [Maps](#), [Deed](#), [Watch List](#), [Tax Info](#)

DOM = Days on Market, Occ. = Occupancy, FL = Floor Number