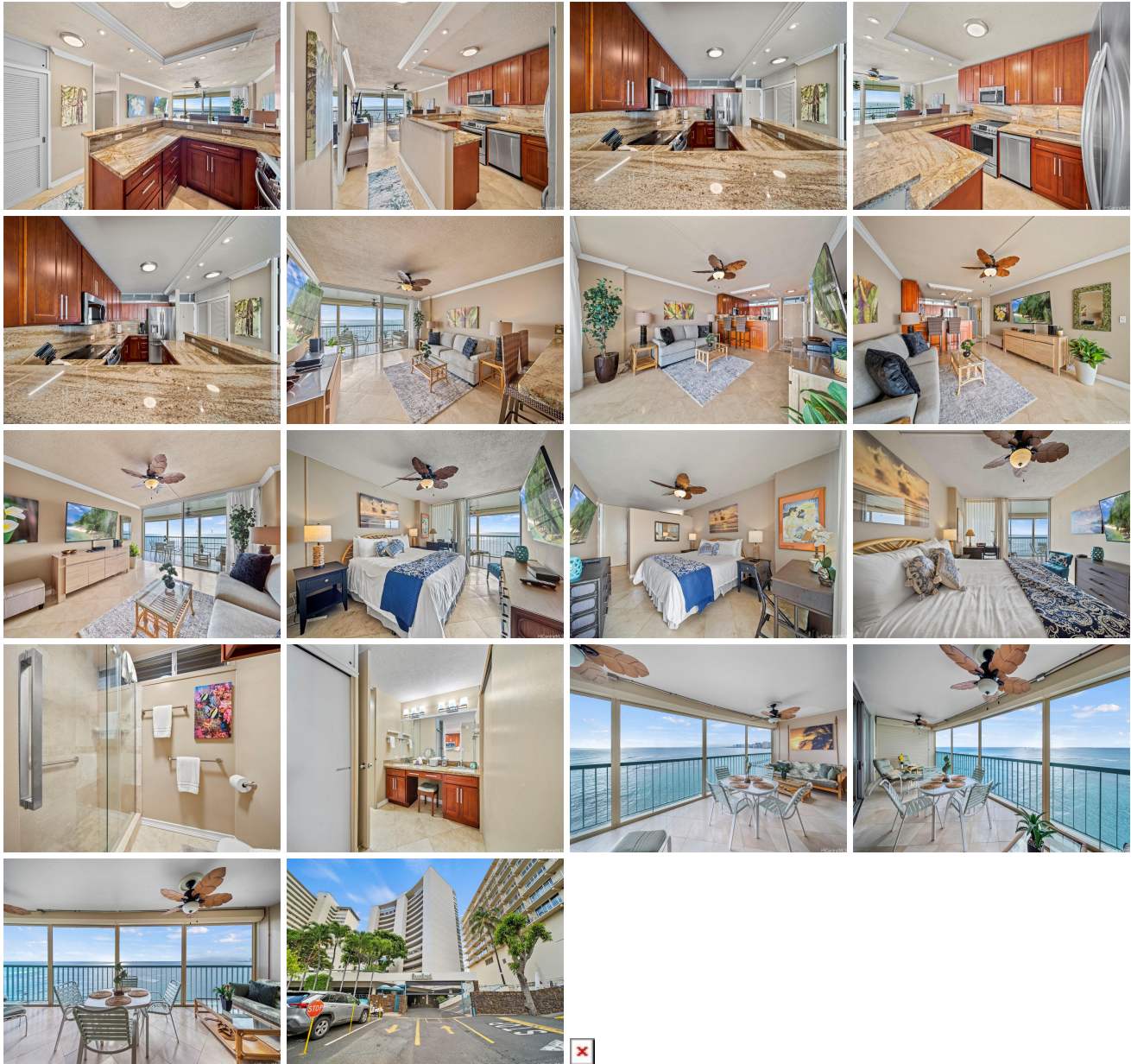


Sans Souci Inc 2877 Kalakaua Avenue Unit 701, Honolulu 96815 * Sans Souci Inc *

\$1,195,000 * Originally \$1,295,000

Beds: 1	MLS#: 202403282, LH	Year Built: 1960
Bath: 1/0	Status: Active	Remodeled: 2014
Living Sq. Ft.: 707	List Date & DOM: 02-09-2024 & 91	Total Parking: 1
Land Sq. Ft.: 0	Condition: Excellent	Assessed Value
Lanai Sq. Ft.: 243	Frontage: Ocean	Building: \$1,188,600
Sq. Ft. Other: 0	Tax/Year: \$0/2023	Land: \$124,600
Total Sq. Ft. 950	Neighborhood: Diamond Head	Total: \$1,313,200
Maint./Assoc. \$1,006 / \$3,336	Flood Zone : Zone AE - Tool	Stories / CPR: 8-14 / No
Parking: Covered - 1	Frontage: Ocean	
Zoning : 12 - A-2 Medium Density Apartme	View: Diamond Head, Ocean	

Public Remarks: Relax in your true one bedroom unit located in the Sans Souci. The building is located in the beautiful Historic District on the Gold Coast. You will be immediately drawn to the views on your ocean front lanai. Enjoy spectacular sunsets every night, and Fireworks from Waikiki on Friday nights. Sans Souci is located directly on Kaimana Beach, and you are just steps away from relaxing on the warm sands. Sans Souci 701 has been renovated in 2014 with a new kitchen, bathroom, new tile floors. All furnishings and appliances are included. This unit is ready for you to move right in, unpack and relax! Should you want to use this as a rental unit, it has an excellent rental record. **Sale Conditions:** None **Schools:** [Waikiki](#), [Washington](#), [Kaimuki](#) * [Request Showing](#), [Photos](#), [History](#), [Maps](#), [Deed](#), [Watch List](#), [Tax Info](#)



Address	Price	Bd & Bth	Living / Avg.	Land Avg.	Lanai	Occ.	FL	DOM
---------	-------	----------	---------------	-------------	-------	------	----	-----

2877 Kalakaua Avenue 701	\$1,195,000 LH	1 & 1/0	707 \$1,690	0 \$inf	243	25%	7	91
--	-----------------------	---------	---------------	-----------	-----	-----	---	----

Address	Tax Maint. Ass.	Assessed Land	Assessed Building	Assessed Total	Ratio	Year & Remodeled
2877 Kalakaua Avenue 701	\$0 \$1,006 \$3,336	\$124,600	\$1,188,600	\$1,313,200	91%	1960 & 2014

<p>2877 Kalakaua Avenue 701 - MLS#: 202403282 - Original price was \$1,295,000 - Relax in your true one bedroom unit located in the Sans Souci. The building is located in the beautiful Historic District on the Gold Coast. You will be immediately drawn to the views on your ocean front lanai. Enjoy spectacular sunsets every night, and Fireworks from Waikiki on Friday nights. Sans Souci is located directly on Kaimana Beach, and you are just steps away from relaxing on the warm sands. Sans Souci 701 has been renovated in 2014 with a new kitchen, bathroom, new tile floors. All furnishings and appliances are included. This unit is ready for you to move right in, unpack and relax! Should you want to use this as a rental unit, it has an excellent rental record. Region: Diamond Head Neighborhood: Diamond Head Condition: Excellent Parking: Covered - 1 Total Parking: 1 View: Diamond Head, Ocean Frontage: Ocean Pool: Zoning: 12 - A-2 Medium Density Apartme Sale Conditions: None Schools: Waikiki, Washington, Kaimuki * Request Showing, Photos, History, Maps, Deed, Watch List, Tax Info</p>
--

DOM = Days on Market, Occ. = Occupancy, FL = Floor Number