

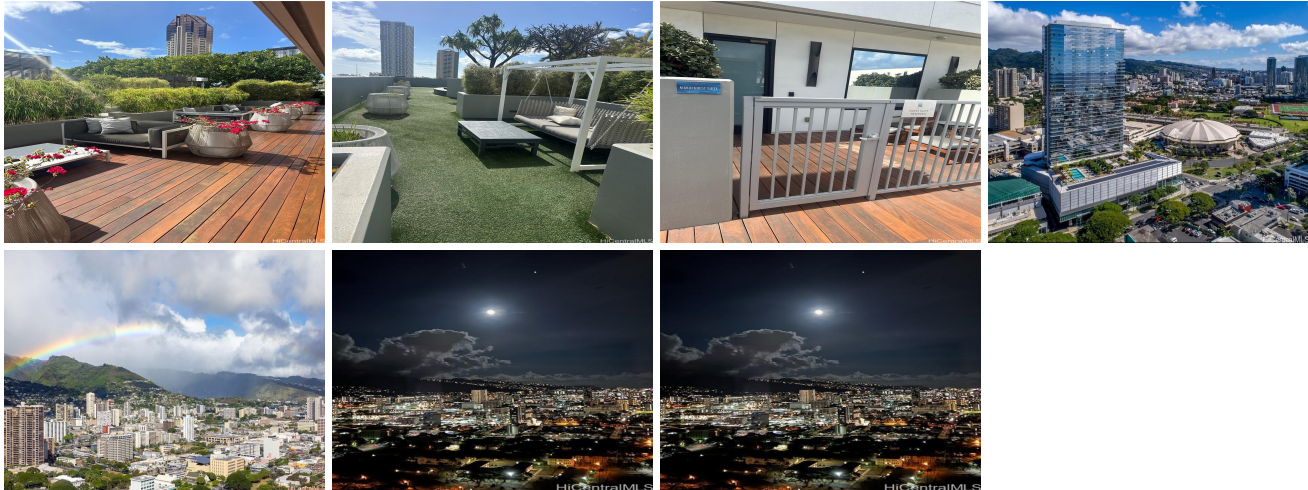
Symphony Honolulu 888 Kapiolani Boulevard Unit PH 4501, Honolulu 96813 * Symphony

Honolulu * \$2,199,000

Beds: 3	MLS#: <u>202403308</u>, FS	Year Built: 2016
Bath: 3/0	Status: Active	Remodeled:
Living Sq. Ft.: 1,653	List Date & DOM: 02-28-2024 & 70	Total Parking: 2
Land Sq. Ft.: 0	Condition: Excellent	Assessed Value
Lanai Sq. Ft.: 0	Frontage:	Building: \$1,796,100
Sq. Ft. Other: 0	Tax/Year: \$513/2023	Land: \$103,000
Total Sq. Ft. 1,653	Neighborhood: Kakaako	Total: \$1,899,100
Maint./Assoc. \$1,397 / \$0	Flood Zone : Zone X - Tool	Stories / CPR: 21+ / No
Parking: Assigned, Covered - 2, Guest, Open - 3+, Secured Entry	Frontage:	
Zoning : Kak - Kakaako Community Development Project	View: City, Mountain, Sunrise	

Public Remarks: Open house May 12, 2:00-5:00 pm Welcome to luxury living at The Symphony in Kaka'ako! This exquisite penthouse offers three-bedroom, three-bathroom with 1,653 square feet of living space and includes two side-by-side parking spaces. As you enter, every room you'll be greeted by floor-to-ceiling windows that offer breathtaking views of the majestic Ko'olau Mountains and iconic Koko Head. The 10-foot-tall ceilings create an open and spacious feel throughout the unit. This kitchen is a chef's dream, featuring a full suite of Gaggenau appliances and stylish Studio Becker cabinetry designed for both elegance and functionality. Custom closets and designer furniture from CS Wo along with white smoke ash flooring adds a touch of modern sophistication to the space. The Symphony offers comfort, community and security, along with an array of amenities, including an infinity heated pool, 2 spas, BBQ cabanas, dog park, doorman, movie theater, fitness center and two guest suites, along with the professional staff, dedicated to providing helpful services to the residents. **Sale Conditions:** None **Schools:** , , * [Request Showing](#), [Photos](#), [History](#), [Maps](#), [Deed](#), [Watch List](#), [Tax Info](#)





Address	Price	Bd & Bth	Living / Avg.	Land Avg.	Lanai	Occ.	FL	DOM
888 Kapiolani Boulevard PH 4501	\$2,199,000	3 & 3/0	1,653 \$1,330	0 \$inf	0	64%	45	70

Address	Tax Maint. Ass.	Assessed Land	Assessed Building	Assessed Total	Ratio	Year & Remodeled
888 Kapiolani Boulevard PH 4501	\$513 \$1,397 \$0	\$103,000	\$1,796,100	\$1,899,100	116%	2016 & NA

[888 Kapiolani Boulevard PH 4501](#) - MLS#: [202403308](#) - Open house May 12, 2:00-5:00 pm Welcome to luxury living at The Symphony in Kaka'ako! This exquisite penthouse offers three-bedroom, three-bathroom with 1,653 square feet of living space and includes two side-by-side parking spaces. As you enter, every room you'll be greeted by floor-to-ceiling windows that offer breathtaking views of the majestic Ko'olau Mountains and iconic Koko Head. The 10-foot-tall ceilings create an open and spacious feel throughout the unit. This kitchen is a chef's dream, featuring a full suite of Gaggenau appliances and stylish Studio Becker cabinetry designed for both elegance and functionality. Custom closets and designer furniture from CS Wo along with white smoke ash flooring adds a touch of modern sophistication to the space. The Symphony offers comfort, community and security, along with an array of amenities, including an infinity heated pool, 2 spas, BBQ cabanas, dog park, doorman, movie theater, fitness center and two guest suites, along with the professional staff, dedicated to providing helpful services to the residents. **Region:** Metro **Neighborhood:** Kakaako **Condition:** Excellent **Parking:** Assigned, Covered - 2, Guest, Open - 3+, Secured Entry **Total Parking:** 2 **View:** City, Mountain, Sunrise **Frontage:** Pool: **Zoning:** Kak - Kakaako Community Development Project **Sale Conditions:** None **Schools:** , , * [Request Showing](#), [Photos](#), [History](#), [Maps](#), [Deed](#), [Watch List](#), [Tax Info](#)

DOM = Days on Market, Occ. = Occupancy, FL = Floor Number