

## **Executive Centre 1088 Bishop Street Unit 2006, Honolulu 96813 \* Executive Centre \***

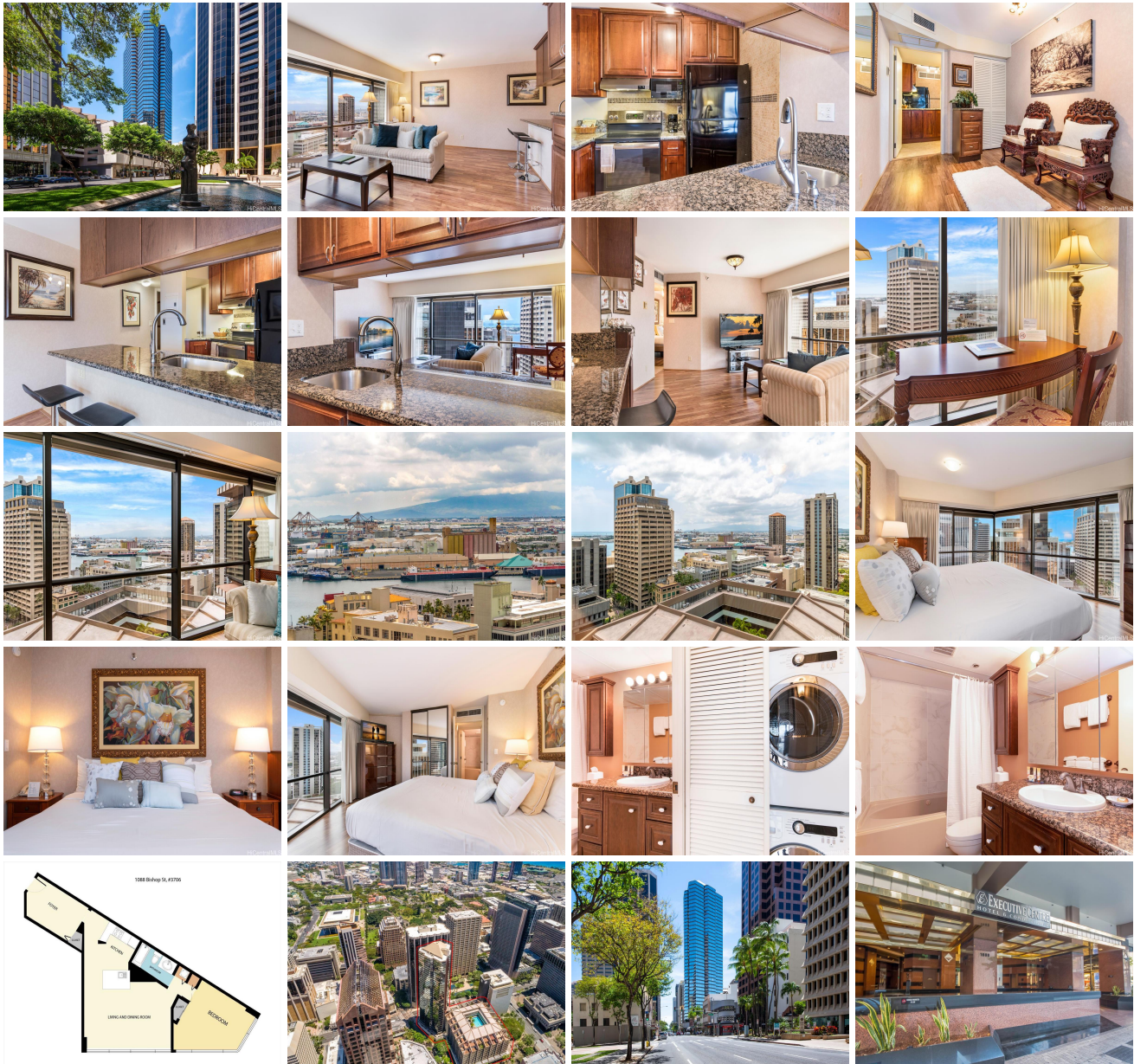
**\$598,000**

Beds: <b>1</b>	MLS#: <b><u>202403331</u>, FS</b>	Year Built: <b>1984</b>
Bath: <b>1/0</b>	Status: <b>Active</b>	Remodeled: <b>2016</b>
Living Sq. Ft.: <b>798</b>	List Date & DOM: <b>02-12-2024 &amp; 87</b>	Total Parking: <b>1</b>
Land Sq. Ft.: <b>58,370</b>	Condition: <b>Above Average</b>	<a href="#">Assessed Value</a>
Lanai Sq. Ft.: <b>0</b>	Frontage:	Building: <b>\$361,900</b>
Sq. Ft. Other: <b>0</b>	Tax/Year: <b>\$437/2024</b>	Land: <b>\$48,800</b>
Total Sq. Ft. <b>798</b>	Neighborhood: <b>Downtown</b>	Total: <b>\$410,700</b>
Maint./Assoc. <b>\$1,357 / \$0</b>	<a href="#">Flood Zone</a> : <b>Zone X - Tool</b>	Stories / CPR: <b>21+ / No</b>
Parking: <b>Assigned, Covered - 1, Secured Entry</b>	Frontage:	

[Zoning](#): **34 - BMX-4 Central Business Mix**

View: **City, Coastline, Ocean**

**Public Remarks:** THE ONLY LEGAL SHORT-TERM DAILY RENTAL CONDO-HOTEL in the heart of the downtown Honolulu district. This tower suite largest 1-bedroom/1-bath floorplan offers a separate foyer entrance, floor-to-ceiling glass windows, upgraded full kitchen and bath, washer/dryer, central AC, and comes fully furnished including 1 assigned covered parking stall. Enjoy the high floor views of the Honolulu harbor, coastline and the brilliant colors of city lights. Great flexible mix use as rental and/or enjoy as a vacation or primary home and/or simply as an office living suite. Executive Centre is a reputable mixed use condo-hotel/office building conveniently located in short distances to offices, Hawaii Pacific University, eateries, art galleries, night market festivals, historic Chinatown, medical facilities, shopping centers, bus-lines, freeway access & many more essentials of the Honolulu's Downtown district. Maintenance fee includes cable TV, internet, (hot) water, sewer, common area expenses and capital reserves. **Sale Conditions:** None **Schools:** [Royal](#), [Keelikolani](#), [Mckinley](#) \* [Request Showing](#), [Photos](#), [History](#), [Maps](#), [Deed](#), [Watch List](#), [Tax Info](#)





Address	Price	Bd & Bth	Living / Avg.	Land   Avg.	Lanai	Occ.	FL	DOM
<a href="#">1088 Bishop Street 2006</a>	<a href="#">\$598,000</a>	1 & 1/0	798   \$749	58,370   \$10	0	30%	20	87

Address	Tax   Maint.   Ass.	Assessed Land	Assessed Building	Assessed Total	Ratio	Year & Remodeled
<a href="#">1088 Bishop Street 2006</a>	\$437   \$1,357   \$0	\$48,800	\$361,900	\$410,700	146%	1984 & 2016

[1088 Bishop Street 2006](#) - MLS#: [202403331](#) - THE ONLY LEGAL SHORT-TERM DAILY RENTAL CONDO-HOTEL in the heart of the downtown Honolulu district. This tower suite largest 1-bedroom/1-bath floorplan offers a separate foyer entrance, floor-to-ceiling glass windows, upgraded full kitchen and bath, washer/dryer, central AC, and comes fully furnished including 1 assigned covered parking stall. Enjoy the high floor views of the Honolulu harbor, coastline and the brilliant colors of city lights. Great flexible mix use as rental and/or enjoy as a vacation or primary home and/or simply as an office living suite. Executive Centre is a reputable mixed use condo-hotel/office building conveniently located in short distances to offices, Hawaii Pacific University, eateries, art galleries, night market festivals, historic Chinatown, medical facilities, shopping centers, bus-lines, freeway access & many more essentials of the Honolulu's Downtown district. Maintenance fee includes cable TV, internet, (hot) water, sewer, common area expenses and capital reserves. **Region:** Metro **Neighborhood:** Downtown **Condition:** Above Average **Parking:** Assigned, Covered - 1, Secured Entry **Total Parking:** 1 **View:** City, Coastline, Ocean **Frontage:** **Pool:** **Zoning:** 34 - BMX-4 Central Business Mix **Sale Conditions:** None **Schools:** [Royal, Keelikolani, Mckinley](#) \* [Request Showing](#), [Photos](#), [History](#), [Maps](#), [Deed](#), [Watch List](#), [Tax Info](#)

DOM = Days on Market, Occ. = Occupancy, FL = Floor Number