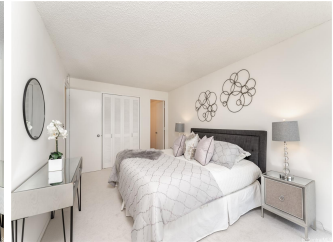


1350 Ala Moana 1350 Ala Moana Boulevard Unit 1901, Honolulu 96814 * 1350 Ala Moana *

\$1,300,000

Beds: 2	MLS#: <u>202403498</u>, FS	Year Built: 1968
Bath: 2/0	Status: Pending	Remodeled:
Living Sq. Ft.: 1,109	List Date & DOM: 03-29-2024 & 23	Total Parking: 1
Land Sq. Ft.: 0	Condition: Above Average	Assessed Value
Lanai Sq. Ft.: 196	Frontage:	Building: \$1,160,400
Sq. Ft. Other: 0	Tax/Year: \$374/2024	Land: \$66,500
Total Sq. Ft. 1,305	Neighborhood: Kakaako	Total: \$1,226,900
Maint./Assoc. \$1,611 / \$0	Flood Zone : Zone AE - Tool	Stories / CPR: / No
Parking: Assigned, Covered - 1	Frontage:	
Zoning : Kak - Kakaako Community Development Project	City, Coastline, Diamond Head, Marina/Canal, Mountain, Ocean, Sunset	

Public Remarks: NEW LISTING!! Stunning unobstructed and panoramic ocean, sunset, city, mountain, and Diamond Head views await you from this spacious 2 bdrm/2 bath/1 covered pkg CORNER/END unit in highly desirable 1350 Ala Moana. With over 1,100 sq. ft. of interior living space, this preferred "01" stack unit features fresh interior paint, new carpet and two separate lanais from which to soak in the amazing views. This unit is situated at the end of the hallway which allows for maximum privacy. Enjoy resort-like amenities such as a pool and whirlpool spa, a great lawn, BBQ area, exercise room and more! Conveniently located directly across from Ala Moana Beach Park and Ala Moana Shopping Center with an abundance of shopping, restaurants, and entertainment. Don't miss this fantastic opportunity! **Sale Conditions:** None **Schools:** [Kaahumanu](#), [Stevenson](#), [Mckinley](#) * [Request Showing](#), [Photos](#), [History](#), [Maps](#), [Deed](#), [Watch List](#), [Tax Info](#)





Address	Price	Bd & Bth	Living / Avg.	Land Avg.	Lanai	Occ.	FL	DOM
1350 Ala Moana Boulevard 1901	\$1,300,000	2 & 2/0	1,109 \$1,172	0 \$inf	196	38%	19	23

Address	Tax Maint. Ass.	Assessed Land	Assessed Building	Assessed Total	Ratio	Year & Remodeled
1350 Ala Moana Boulevard 1901	\$374 \$1,611 \$0	\$66,500	\$1,160,400	\$1,226,900	106%	1968 & NA

[1350 Ala Moana Boulevard 1901](#) - MLS#: [202403498](#) - NEW LISTING!! Stunning unobstructed and panoramic ocean, sunset, city, mountain, and Diamond Head views await you from this spacious 2 bdrm/2 bath/1 covered pkg CORNER/END unit in highly desirable 1350 Ala Moana. With over 1,100 sq. ft. of interior living space, this preferred "01" stack unit features fresh interior paint, new carpet and two separate lanais from which to soak in the amazing views. This unit is situated at the end of the hallway which allows for maximum privacy. Enjoy resort-like amenities such as a pool and whirlpool spa, a great lawn, BBQ area, exercise room and more! Conveniently located directly across from Ala Moana Beach Park and Ala Moana Shopping Center with an abundance of shopping, restaurants, and entertainment. Don't miss this fantastic opportunity!

Region: Metro **Neighborhood:** Kakaako **Condition:** Above Average **Parking:** Assigned, Covered - 1 **Total Parking:** 1
View: City, Coastline, Diamond Head, Marina/Canal, Mountain, Ocean, Sunset **Frontage:** Pool: **Zoning:** Kak - Kakaako Community Development Project **Sale Conditions:** None **Schools:** [Kaahumanu](#), [Stevenson](#), [Mckinley](#) * [Request Showing](#), [Photos](#), [History](#), [Maps](#), [Deed](#), [Watch List](#), [Tax Info](#)

DOM = Days on Market, Occ. = Occupancy, FL = Floor Number