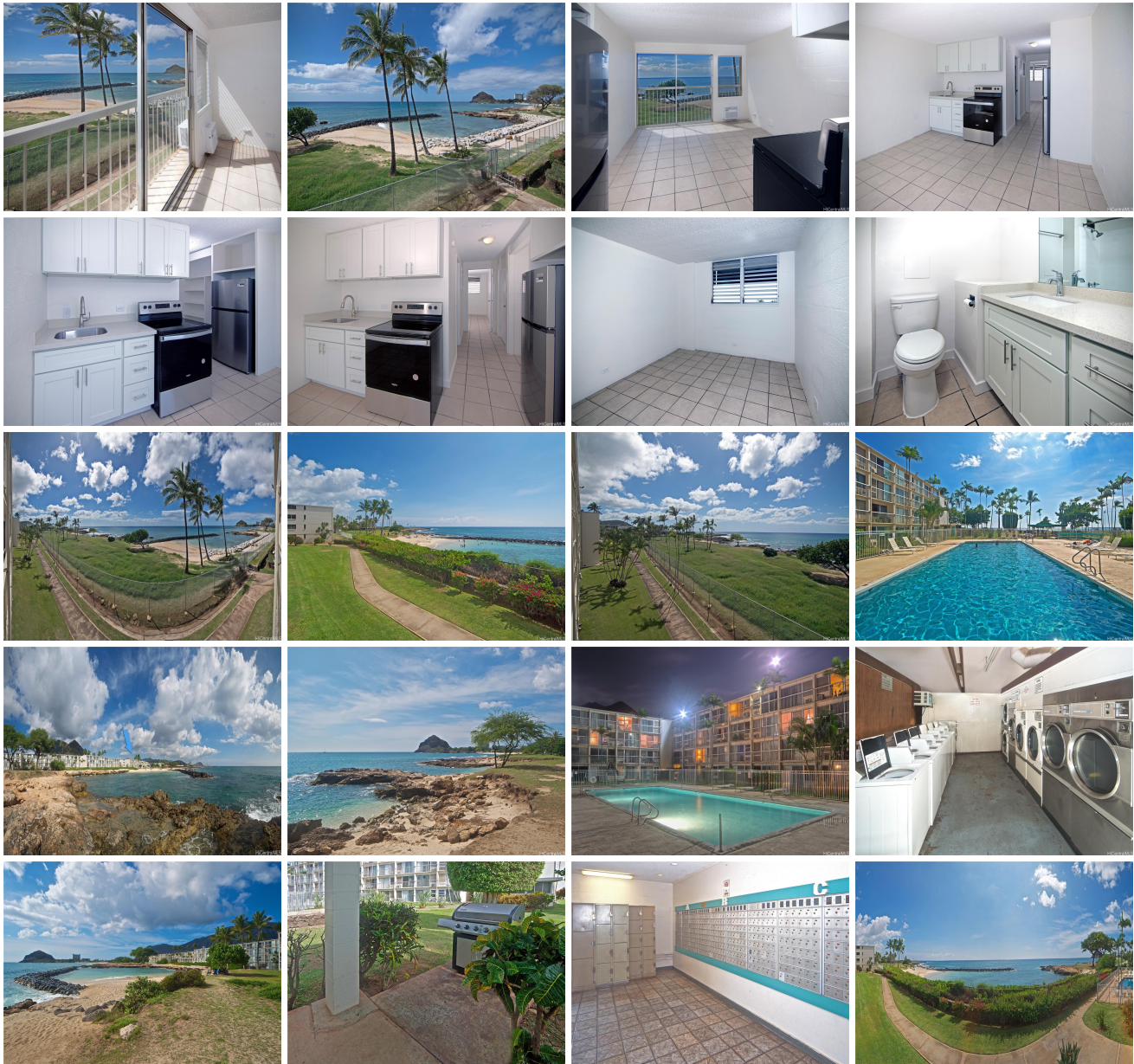


## **Makaha Surfside 85-175 Farrington Highway Unit B303, Waianae 96792 \* Makaha Surfside**

**\* \$240,000**

Beds: <b>1</b>	MLS#: <b><u>202403534</u>, FS</b>	Year Built: <b>1974</b>
Bath: <b>1/0</b>	Status: <b>Active Under Contract</b>	Remodeled: <b>2024</b>
Living Sq. Ft.: <b>412</b>	List Date & DOM: <b>02-13-2024 &amp; 84</b>	Total Parking: <b>1</b>
Land Sq. Ft.: <b>242,019</b>	Condition: <b>Excellent</b>	<a href="#">Assessed Value</a>
Lanai Sq. Ft.: <b>0</b>	<b>Ocean, Sandy Beach, Waterfront</b>	Building: <b>\$178,600</b>
Sq. Ft. Other: <b>0</b>	Tax/Year: <b>\$63/2023</b>	Land: <b>\$36,600</b>
Total Sq. Ft. <b>412</b>	Neighborhood: <b>Waianae</b>	Total: <b>\$215,200</b>
Maint./Assoc. <b>\$603 / \$0</b>	<a href="#">Flood Zone</a> : <b>Zone AE - <u>Tool</u></b>	Stories / CPR: <b>Three+ / No</b>
Parking: <b>Assigned, Covered - 1, Guest</b>	Frontage: <b>Ocean, Sandy Beach, Waterfront</b>	View: <b>Ocean, Sunset</b>
<a href="#">Zoning</a> : <b>11 - A-1 Low Density Apartment</b>		

**Public Remarks:** Escape to your dream seaside retreat with this fully-remodeled 1-bedroom, 1-bathroom Makaha Surfside condo, located on the tranquil Leeward Coast of Oahu. This secure building ensures your safety and peace all year round. Be awestruck by the ever-changing ocean and stunning sunset views right from your window. Enjoy exclusive oceanfront living with BBQ are and swimming pool. Inside, you'll find a beautiful new kitchen adorned with quartz countertops and stainless steel appliances along with a newly revamped bathroom, each elegantly designed to meet the highest standards. A window air conditioning unit ensures your comfort in this exceptional condo. Additionally, the convenience of designated parking takes the hassle out of car storage. This tropically striking haven is waiting for you! **Sale Conditions:** None **Schools:** [Kamaile](#), [Waianae](#), [Waianae](#) \* [Request Showing](#), [Photos](#), [History](#), [Maps](#), [Deed](#), [Watch List](#), [Tax Info](#)





Address	Price	Bd & Bth	Living / Avg.	Land   Avg.	Lanai	Occ.	FL	DOM
<a href="#">85-175 Farrington Highway B303</a>	<a href="#">\$240,000</a>	1 & 1/0	412   \$583	242,019   \$1	0	21%	3	84

Address	Tax   Maint.   Ass.	Assessed Land	Assessed Building	Assessed Total	Ratio	Year & Remodeled
<a href="#">85-175 Farrington Highway B303</a>	\$63   \$603   \$0	\$36,600	\$178,600	\$215,200	112%	1974 & 2024

[85-175 Farrington Highway B303](#) - MLS#: [202403534](#) - Escape to your dream seaside retreat with this fully-remodeled 1-bedroom, 1-bathroom Makaha Surfside condo, located on the tranquil Leeward Coast of Oahu. This secure building ensures your safety and peace all year round. Be awestruck by the ever-changing ocean and stunning sunset views right from your window. Enjoy exclusive oceanfront living with BBQ are and swimming pool. Inside, you'll find a beautiful new kitchen adorned with quartz countertops and stainless steel appliances along with a newly revamped bathroom, each elegantly designed to meet the highest standards. A window air conditioning unit ensures your comfort in this exceptional condo. Additionally, the convenience of designated parking takes the hassle out of car storage. This tropically striking haven is waiting for you! **Region:** Leeward **Neighborhood:** Waianae **Condition:** Excellent **Parking:** Assigned, Covered - 1, Guest **Total Parking:** 1 **View:** Ocean, Sunset **Frontage:** Ocean,Sandy Beach,Waterfront **Pool:** **Zoning:** 11 - A-1 Low Density Apartment **Sale Conditions:** None **Schools:** [Kamaile](#), [Waianae](#), [Waianae](#) \* [Request Showing](#), [Photos](#), [History](#), [Maps](#), [Deed](#), [Watch List](#), [Tax Info](#)

DOM = Days on Market, Occ. = Occupancy, FL = Floor Number