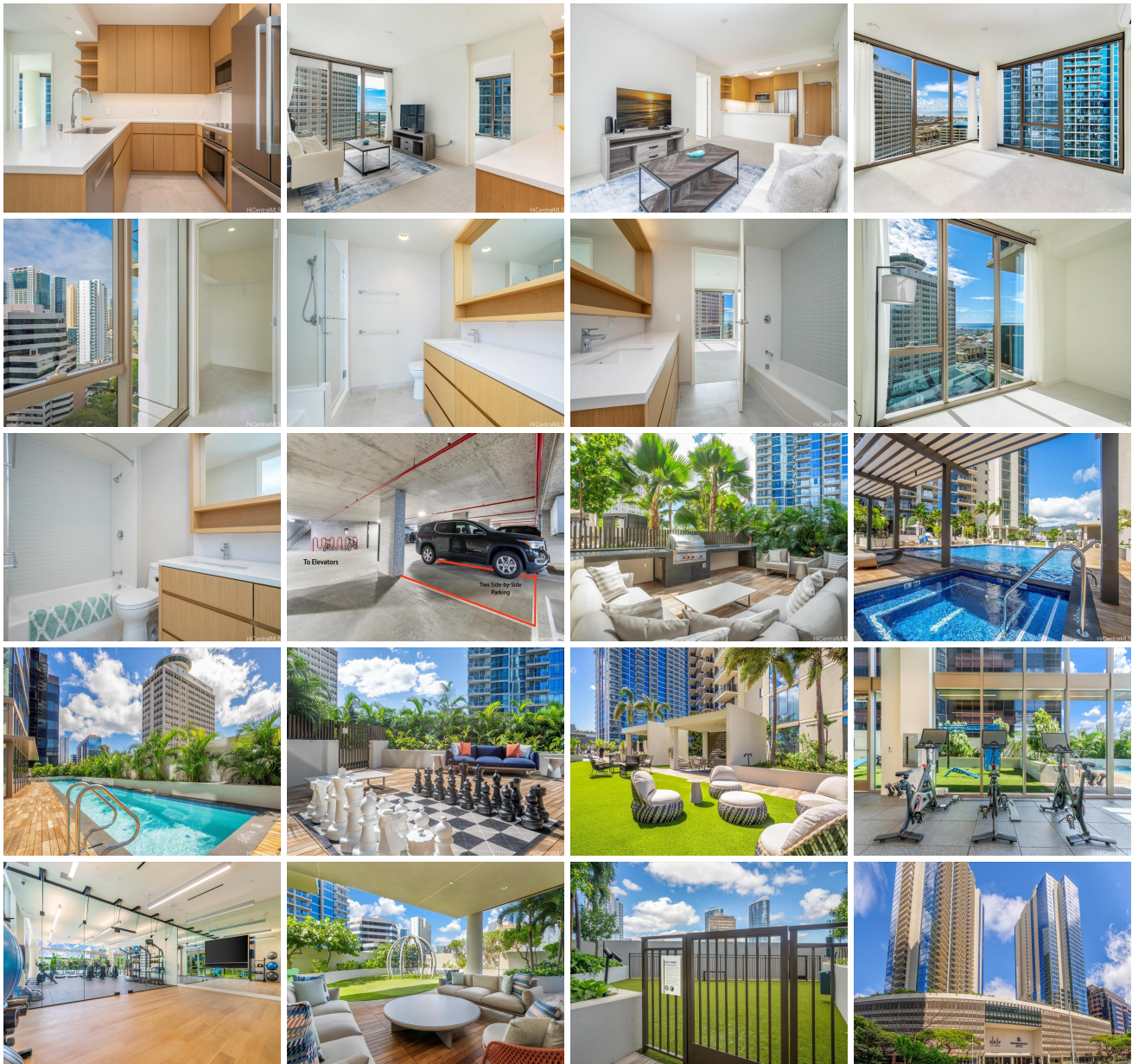
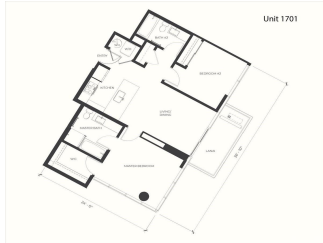


Sky Ala Moana West 1388 Kapiolani Boulevard Unit 1701, Honolulu 96814 * Sky Ala Moana West * \$1,319,888 * Originally \$1,399,888

Beds: 2	MLS#: <u>202403711</u>, FS	Year Built: 2023
Bath: 2/0	Status: Active	Remodeled:
Living Sq. Ft.: 901	List Date & DOM: 02-17-2024 & 85	Total Parking: 2
Land Sq. Ft.: 0	Condition: Excellent	Assessed Value
Lanai Sq. Ft.: 91	Frontage:	Building: \$302,400
Sq. Ft. Other: 0	Tax/Year: \$106/2023	Land: \$61,800
Total Sq. Ft. 992	Neighborhood: Holiday Mart	Total: \$364,200
Maint./Assoc. \$1,182 / \$0	Flood Zone : Zone X - <u>Tool</u>	Stories / CPR: 21+ / No
Parking: Assigned, Covered - 2	Frontage:	
Zoning : 33 - BMX-3 Community Business M	View: City, Mountain, Ocean	

Public Remarks: Come explore this pristine, never-occupied unit! Situated in the highly sought-after "01" layout of the newly developed Sky Ala Moana West Tower, this brand new 2-bedroom, 2-bathroom residence boasts breathtaking ocean views from both the living room and bedrooms. Enjoy the convenience of two covered parking spaces and a spacious open lanai. With floor-to-ceiling windows, a modern kitchen equipped with Bosch appliances, large stacked washer and dryer and access to opulent resort-like amenities including himalayan heated saltwater and lap pools, spa facilities, fitness center, dog park, and more, Sky Ala Moana offers a luxurious urban lifestyle. Located just steps from Ala Moana Shopping Center, and within close proximity to Ala Moana Beach Park and a variety of dining options, this residence provides the perfect blend of convenience and luxury living. **Sale Conditions:** None **Schools:** , , * [Request Showing](#), [Photos](#), [History](#), [Maps](#), [Deed](#), [Watch List](#), [Tax Info](#)





Address	Price	Bd & Bth	Living / Avg.	Land Avg.	Lanai	Occ.	FL	DOM
1388 Kapiolani Boulevard 1701	\$1,319,888	2 & 2/0	901 \$1,465	0 \$inf	91	0%	17	85

Address	Tax Maint. Ass.	Assessed Land	Assessed Building	Assessed Total	Ratio	Year & Remodeled
1388 Kapiolani Boulevard 1701	\$106 \$1,182 \$0	\$61,800	\$302,400	\$364,200	362%	2023 & NA

[1388 Kapiolani Boulevard 1701](#) - MLS#: [202403711](#) - Original price was \$1,399,888 - Come explore this pristine, never-occupied unit! Situated in the highly sought-after "01" layout of the newly developed Sky Ala Moana West Tower, this brand new 2-bedroom, 2-bathroom residence boasts breathtaking ocean views from both the living room and bedrooms. Enjoy the convenience of two covered parking spaces and a spacious open lanai. With floor-to-ceiling windows, a modern kitchen equipped with Bosch appliances, large stacked washer and dryer and access to opulent resort-like amenities including himalayan heated saltwater and lap pools, spa facilities, fitness center, dog park, and more, Sky Ala Moana offers a luxurious urban lifestyle. Located just steps from Ala Moana Shopping Center, and within close proximity to Ala Moana Beach Park and a variety of dining options, this residence provides the perfect blend of convenience and luxury living. **Region:** Metro **Neighborhood:** Holiday Mart **Condition:** Excellent **Parking:** Assigned, Covered - 2 **Total Parking:** 2 **View:** City, Mountain, Ocean **Frontage:** **Pool:** **Zoning:** 33 - BMX-3 Community Business M **Sale Conditions:** None **Schools:** , , * [Request Showing](#), [Photos](#), [History](#), [Maps](#), [Deed](#), [Watch List](#), [Tax Info](#)

DOM = Days on Market, Occ. = Occupancy, FL = Floor Number