

Discovery Bay 1778 Ala Moana Boulevard Unit 2509, Honolulu 96815 * Discovery Bay *

\$390,000 * Originally \$410,000

Beds: **1**

MLS#: **202403792**, LH

Year Built: **1977**

Bath: **1/0**

Status: **Active Under Contract**

Remodeled:

Living Sq. Ft.: **724**

List Date & DOM: **02-20-2024 & 53**

Total Parking: **1**

Land Sq. Ft.: **84,463**

Condition: **Excellent**

[Assessed Value](#)

Lanai Sq. Ft.: **128**

Frontage:

Building: **\$605,800**

Sq. Ft. Other: **0**

Tax/Year: **\$181/2024**

Land: **\$26,200**

Total Sq. Ft. **852**

Neighborhood: **Waikiki**

Total: **\$632,000**

Maint./Assoc. **\$1,015 / \$0**

[Flood Zone](#): **Zone AE - Tool**

Stories / CPR: **21+ / No**

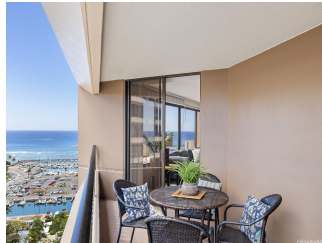
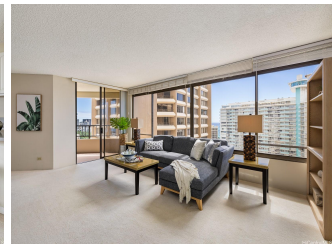
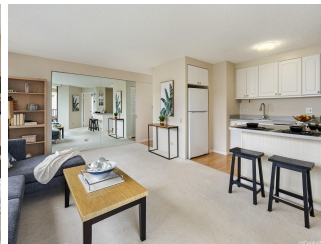
Parking: **Assigned, Covered - 1, Secured Entry**

Frontage:

[Zoning](#): **X2 - Apartment Precinct**

View: **City, Coastline, Marina/Canal, Ocean**

Public Remarks: Indulge in breathtaking ocean vistas at Discovery Bay! This stunning 1-bed, 1-bath corner unit on the 25th floor of Endeavour Tower offers captivating ocean and marina vistas. Thoughtfully equipped with a washer, dryer, central AC, and a spacious lanai, this home is prepared for your comfort. Luxuriate in a range of amenities, including a pool, sauna, whirlpool, BBQ area, exercise room, and sun deck. Convenience is seamlessly integrated with ground-floor eateries and businesses. Located moments from Ala Moana Shopping Center, Ala Moana Beach Park, Waikiki, and Ilikai Marina, this residence is your gateway to a world of vibrant attractions. Beyond being a home, Discovery Bay offers a lifestyle marked by convenience and opulence, where dining, shopping, and entertainment options abound. Enjoy the added advantage of easy commuting with proximity to the bus line. Seize the opportunity to embrace the pinnacle of island living. Your oasis at Discovery Bay awaits, promising a harmonious blend of luxury and breathtaking ocean-marina views. **Sale Conditions:** None
Schools: , , * [Request Showing](#), [Photos](#), [History](#), [Maps](#), [Deed](#), [Watch List](#), [Tax Info](#)





Address	Price	Bd & Bth	Living / Avg.	Land Avg.	Lanai	Occ.	FL	DOM
1778 Ala Moana Boulevard 2509	\$390,000 LH	1 & 1/0	724 \$539	84,463 \$5	128	20%	25	53

Address	Tax Maint. Ass.	Assessed Land	Assessed Building	Assessed Total	Ratio	Year & Remodeled
1778 Ala Moana Boulevard 2509	\$181 \$1,015 \$0	\$26,200	\$605,800	\$632,000	62%	1977 & NA

[1778 Ala Moana Boulevard 2509](#) - MLS#: [202403792](#) - Original price was \$410,000 - Indulge in breathtaking ocean vistas at Discovery Bay! This stunning 1-bed, 1-bath corner unit on the 25th floor of Endeavour Tower offers captivating ocean and marina vistas. Thoughtfully equipped with a washer, dryer, central AC, and a spacious lanai, this home is prepared for your comfort. Luxuriate in a range of amenities, including a pool, sauna, whirlpool, BBQ area, exercise room, and sun deck. Convenience is seamlessly integrated with ground-floor eateries and businesses. Located moments from Ala Moana Shopping Center, Ala Moana Beach Park, Waikiki, and Ilikai Marina, this residence is your gateway to a world of vibrant attractions. Beyond being a home, Discovery Bay offers a lifestyle marked by convenience and opulence, where dining, shopping, and entertainment options abound. Enjoy the added advantage of easy commuting with proximity to the bus line. Seize the opportunity to embrace the pinnacle of island living. Your oasis at Discovery Bay awaits, promising a harmonious blend of luxury and breathtaking ocean-marina views. **Region:** Metro **Neighborhood:** Waikiki **Condition:** Excellent **Parking:** Assigned, Covered - 1, Secured Entry **Total Parking:** 1 **View:** City, Coastline, Marina/Canal, Ocean **Frontage:** **Pool:** **Zoning:** X2 - Apartment Precinct **Sale Conditions:** None **Schools:** , , * [Request Showing](#), [Photos](#), [History](#), [Maps](#), [Deed](#), [Watch List](#), [Tax Info](#)

DOM = Days on Market, Occ. = Occupancy, FL = Floor Number