

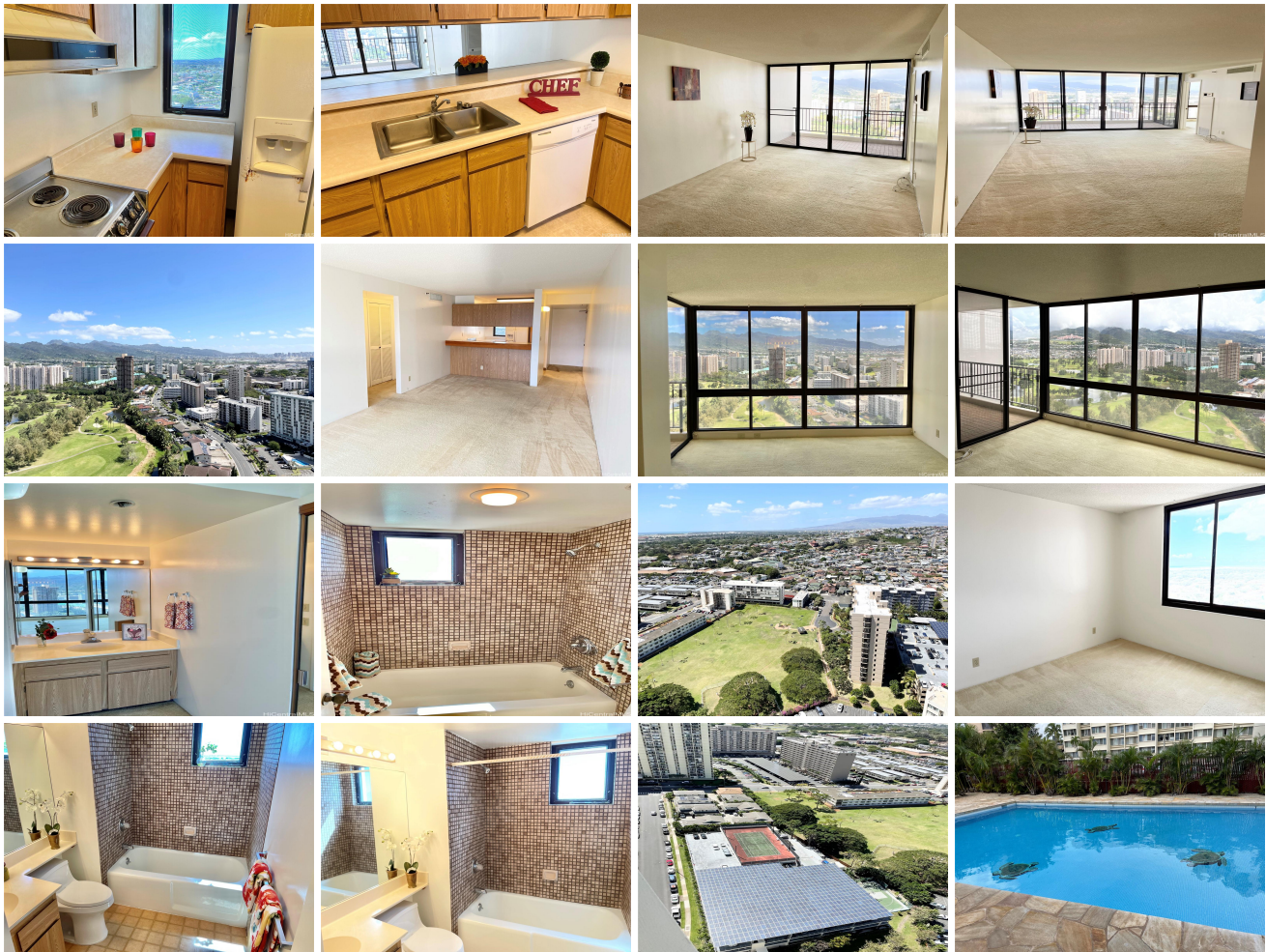
Franklin Towers 990 Ala Nanala Street Unit 30A, Honolulu 96818 * Franklin Towers *

\$600,000

| | | |
|---|--|--------------------------------|
| Beds: 2 | MLS#: <u>202403798</u>, FS | Year Built: 1982 |
| Bath: 2/0 | Status: Active | Remodeled: |
| Living Sq. Ft.: 1,026 | List Date & DOM: 04-05-2024 & 42 | Total Parking: 2 |
| Land Sq. Ft.: 81,675 | Condition: Fair | Assessed Value |
| Lanai Sq. Ft.: 85 | Frontage: | Building: \$558,900 |
| Sq. Ft. Other: 0 | Tax/Year: \$180/2024 | Land: \$59,500 |
| Total Sq. Ft. 1,111 | Neighborhood: Salt Lake | Total: \$618,400 |
| Maint./Assoc. \$962 / \$0 | Flood Zone : Zone X - <u>Tool</u> | Stories / CPR: One / No |
| Parking: Covered - 2, Garage, Guest, Street | Frontage: | |
| Zoning : 12 - A-2 Medium Density Apartme | View: City, Golf Course, Mountain, Ocean, Sunrise, Sunset | |

Public Remarks: A great superb building in Salt Lake! Franklin Towers consisting of two towers, East & West, having only two units per tower, just one neighbor, very private. You will be able to enjoy beautiful views from your living room, open lanai and primary bedroom over looking the Honolulu International Country Club's golf course and city views. The 2nd bedroom offers you a west side view of the city & the airport. One can definitely stay in shape with an abundance of amenities from pool, jacuzzi, putting green, basketball court, tennis court and putting green along with a playground for kids too. There is 24 hour security, secured parking garage and guest parking. This "A" stack is a true corner unit offering windows in both bathrooms and the kitchen. Each unit has their own water shut off valve now since the repiping of the building, washer & dryer is located in the unit. Its location is just mintues to H-1 East and West, Daniel K. Inouye Airport, Tripler Hospital & Kaiser Hospital, Restaurants and the new Home Depot. Remodel this special unit to your heart desires. Subject property has TWO COVERED PARKING spaces, on the B and E level of the parking garage. Showings by appointment only!

Sale Conditions: None **Schools:** [Salt Lake](#), [Moanalua](#), [Moanalua](#) * [Request Showing](#), [Photos](#), [History](#), [Maps](#), [Deed](#), [Watch List](#), [Tax Info](#)





| Address | Price | Bd & Bth | Living / Avg. | Land Avg. | Lanai | Occ. | FL | DOM |
|---|---------------------------|----------|---------------|--------------|-------|------|----|-----|
| 990 Ala Nanala Street 30A | \$600,000 | 2 & 2/0 | 1,026 \$585 | 81,675 \$7 | 85 | 65% | 30 | 42 |

| Address | Tax Maint. Ass. | Assessed Land | Assessed Building | Assessed Total | Ratio | Year & Remodeled |
|---|---------------------|---------------|-------------------|----------------|-------|------------------|
| 990 Ala Nanala Street 30A | \$180 \$962 \$0 | \$59,500 | \$558,900 | \$618,400 | 97% | 1982 & NA |

[990 Ala Nanala Street 30A](#) - MLS#: [202403798](#) - A great superb building in Salt Lake! Franklin Towers consisting of two towers, East & West, having only two units per tower, just one neighbor, very private. You will be able to enjoy beautiful views from your living room, open lanai and primary bedroom over looking the Honolulu International Country Club's golf course and city views. The 2nd bedroom offers you a west side view of the city & the airport. One can definitely stay in shape with an abundance of amenities from pool, jacuzzi, putting green, basketball court, tennis court and putting green along with a playground for kids too. There is 24 hour security, secured parking garage and guest parking. This "A" stack is a true corner unit offering windows in both bathrooms and the kitchen. Each unit has their own water shut off valve now since the repiping of the building, washer & dryer is located in the unit. Its location is just mintues to H-1 East and West, Daniel K. Inouye Airport, Tripler Hospital & Kaiser Hospital, Restaurants and the new Home Depot. Remodel this special unit to your heart desires. Subject property has TWO COVERED PARKING spaces, on the B and E level of the parking garage. Showings by appointment only! **Region:** Metro **Neighborhood:** Salt Lake **Condition:** Fair **Parking:** Covered - 2, Garage, Guest, Street **Total Parking:** 2 **View:** City, Golf Course, Mountain, Ocean, Sunrise, Sunset **Frontage:** **Pool:** **Zoning:** 12 - A-2 Medium Density Apartme **Sale Conditions:** None **Schools:** [Salt Lake](#), [Moanalua](#), [Moanalua](#) * [Request Showing](#), [Photos](#), [History](#), [Maps](#), [Deed](#), [Watch List](#), [Tax Info](#)

DOM = Days on Market, Occ. = Occupancy, FL = Floor Number