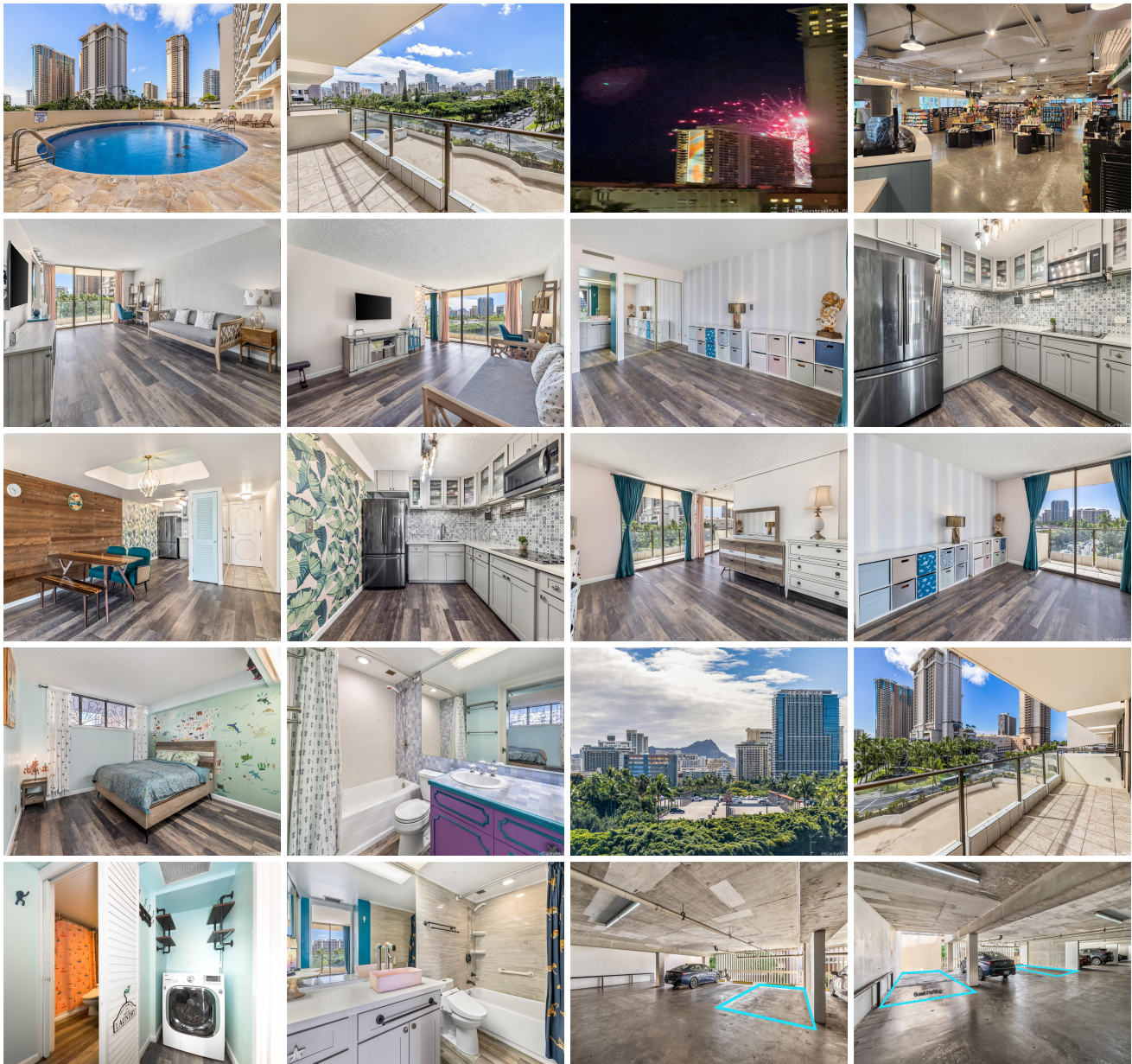


**Waikiki \* \$609,998 \* Originally \$610,000**

Beds: <b>2</b>	MLS#: <b>202403855, FS</b>	Year Built: <b>1970</b>
Bath: <b>2/0</b>	Status: <b>Active</b>	Remodeled: <b>2019</b>
Living Sq. Ft.: <b>1,180</b>	List Date & DOM: <b>02-26-2024 &amp; 77</b>	Total Parking: <b>1</b>
Land Sq. Ft.: <b>43,124</b>	Condition: <b>Excellent</b>	<a href="#">Assessed Value</a>
Lanai Sq. Ft.: <b>124</b>	Frontage:	Building: <b>\$558,900</b>
Sq. Ft. Other: <b>0</b>	Tax/Year: <b>\$112/2023</b>	Land: <b>\$23,700</b>
Total Sq. Ft. <b>1,304</b>	Neighborhood: <b>Waikiki</b>	Total: <b>\$582,600</b>
Maint./Assoc. <b>\$1,014 / \$0</b>	<a href="#">Flood Zone</a> : <b>Zone AE - Tool</b>	Stories / CPR: <b>21+ / No</b>
Parking: <b>Assigned, Covered - 1, Garage, Guest, Secured Entry</b>	Frontage:	
<a href="#">Zoning</a> : <b>X2 - Apartment Precinct</b>	View: <b>City, Diamond Head, Mounta</b>	

**Public Remarks:** Sunday Open House 5/12/24 2-4p. Experience the allure of this exquisite 2 bed/2 bath / 2 storage / 1 secured garage parking condo at Wailana in Waikiki. Ideally situated, it features a generously sized kitchen and a spacious living room extending to a lanai with pool and Diamond Head views. The dwelling's ambiance is elevated by luxurious vinyl plank flooring newly installed. Enjoy the convenience of central AC and an in-unit washer/dryer, along with the added ease of dedicated secured parking and on site security. Indulge in upscale amenities, such as a pristine pool, recreation area, and secure parking facilities. Convenient location near: Fort DeRussy Park, Ala Moana Shopping Center, Waikiki, Waikiki Beach. Within a short distance, find breathtaking white sandy beaches, world-class shopping, and top-tier entertainment. **Sale Conditions:** None **Schools:** , , \* [Request Showing](#), [Photos](#), [History](#), [Maps](#), [Deed](#), [Watch List](#), [Tax Info](#)





Address	Price	Bd & Bth	Living / Avg.	Land   Avg.	Lanai	Occ.	FL	DOM
<a href="#">1860 Ala Moana Boulevard 604</a>	<b>\$609,998</b>	2 & 2/0	1,180   \$517	43,124   \$14	124	48%	6	77

Address	Tax   Maint.   Ass.	Assessed Land	Assessed Building	Assessed Total	Ratio	Year & Remodeled
<a href="#">1860 Ala Moana Boulevard 604</a>	\$112   \$1,014   \$0	\$23,700	\$558,900	\$582,600	105%	1970 & 2019

[1860 Ala Moana Boulevard 604](#) - MLS#: [202403855](#) - Original price was \$610,000 - Sunday Open House 5/12/24 2-4p. Experience the allure of this exquisite 2 bed/2 bath / 2 storage / 1 secured garage parking condo at Wailana in Waikiki. Ideally situated, it features a generously sized kitchen and a spacious living room extending to a lanai with pool and Diamond Head views. The dwelling's ambiance is elevated by luxurious vinyl plank flooring newly installed. Enjoy the convenience of central AC and an in-unit washer/dryer, along with the added ease of dedicated secured parking and on site security. Indulge in upscale amenities, such as a pristine pool, recreation area, and secure parking facilities. Convenient location near: Fort DeRussy Park, Ala Moana Shopping Center, Waikiki, Waikiki Beach. Within a short distance, find breathtaking white sandy beaches, world-class shopping, and top-tier entertainment. **Region:** Metro **Neighborhood:** Waikiki **Condition:** Excellent **Parking:** Assigned, Covered - 1, Garage, Guest, Secured Entry **Total Parking:** 1 **View:** City, Diamond Head, Mountain **Frontage:** **Pool:** **Zoning:** X2 - Apartment Precinct **Sale Conditions:** None **Schools:** , , \* [Request Showing](#), [Photos](#), [History](#), [Maps](#), [Deed](#), [Watch List](#), [Tax Info](#)

DOM = Days on Market, Occ. = Occupancy, FL = Floor Number