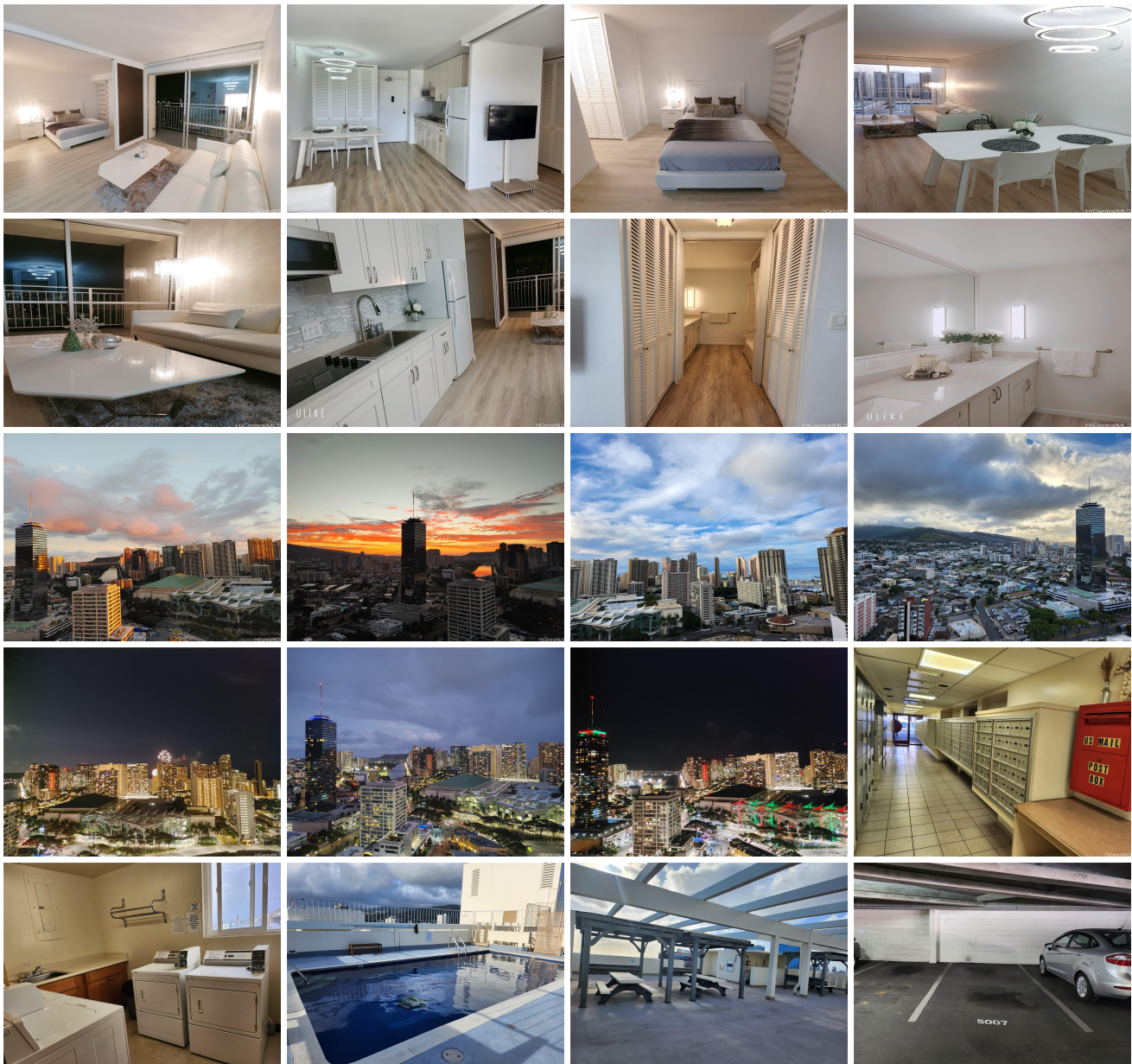


Kapiolani Manor 1655 Makaloa Street Unit 2614, Honolulu 96814 * Kapiolani Manor *

\$409,000 * Originally \$419,000

Beds: 1	MLS#: <u>202404008</u>, FS	Year Built: 1970
Bath: 1/0	Status: Active	Remodeled: 2021
Living Sq. Ft.: 484	List Date & DOM: 02-22-2024 & 77	Total Parking: 1
Land Sq. Ft.: 56,105	Condition: Excellent	Assessed Value
Lanai Sq. Ft.: 71	Frontage:	Building: \$307,400
Sq. Ft. Other: 0	Tax/Year: \$43/2023	Land: \$38,500
Total Sq. Ft. 555	Neighborhood: Holiday Mart	Total: \$345,900
Maint./Assoc. \$598 / \$0	Flood Zone : Zone X - <u>Tool</u>	Stories / CPR: / No
Parking: Covered - 1	Frontage:	
Zoning : 32 - B-2 Community Business Dis	View: City, Coastline, Diamond Head, Marina/Canal, Sunrise	

Public Remarks: Rarely available penthouse corner unit in Kapiolani Manor. Must see the stunning panoramic breathtaking views of the Ala Wai Canal, ocean view and beautiful Friday night firework view. The unit was beautifully remodeled in 2021, new floor, new kitchen sink and new sink cabinet, and new bathroom cabinet. This unit comes with covered parking stall in 1st floor and storage locker located near by parking stall. Maintenance all inclusive with electricity, Cable TV, water and sewer. Community Laundry room is on every floor. Located a few blocks away from the shopping centers and the Magic Island beach park. **Sale Conditions:** None **Schools:** [Kaahumanu](#), [Washington](#), [Mckinley](#) * [Request Showing](#), [Photos](#), [History](#), [Maps](#), [Deed](#), [Watch List](#), [Tax Info](#)





Address	Price	Bd & Bth	Living / Avg.	Land Avg.	Lanai	Occ.	FL	DOM
1655 Makaloa Street 2614	\$409,000	1 & 1/0	484 \$845	56,105 \$7	71	42%	26	77

Address	Tax Maint. Ass.	Assessed Land	Assessed Building	Assessed Total	Ratio	Year & Remodeled
1655 Makaloa Street 2614	\$43 \$598 \$0	\$38,500	\$307,400	\$345,900	118%	1970 & 2021

1655 Makaloa Street 2614 - MLS#: 202404008 - Original price was \$419,000 - Rarely available penthouse corner unit in Kapiolani Manor. Must see the stunning panoramic breathtaking views of the Ala Wai Canal, ocean view and beautiful Friday night firework view. The unit was beautifully remodeled in 2021, new floor, new kitchen sink and new sink cabinet, and new bathroom cabinet. This unit comes with covered parking stall in 1st floor and storage locker located near by parking stall. Maintenance all inclusive with electricity, Cable TV, water and sewer. Community Laundry room is on every floor. Located a few blocks away from the shopping centers and the Magic Island beach park. Region: Metro Neighborhood: Holiday Mart Condition: Excellent Parking: Covered - 1 Total Parking: 1 View: City, Coastline, Diamond Head, Marina/Canal, Sunrise Frontage: Pool: Zoning: 32 - B-2 Community Business Dis Sale Conditions: None Schools: Kaahumanu , Washington , Mckinley * Request Showing , Photos , History , Maps , Deed , Watch List , Tax Info						
---	--	--	--	--	--	--

DOM = Days on Market, Occ. = Occupancy, FL = Floor Number