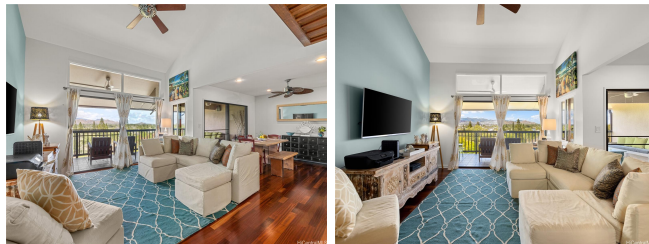


Bluestone 1208C Kamahele Street Unit 2602, Kailua 96734 * Bluestone * \$1,445,000

Beds: 3	MLS#: 202404056, FS	Year Built: 1979
Bath: 2/1	Status: Pending	Remodeled:
Living Sq. Ft.: 1,946	List Date & DOM: 02-23-2024 & 45	Total Parking: 2
Land Sq. Ft.: 2,309,421	Condition: Excellent	Assessed Value
Lanai Sq. Ft.: 547	Frontage: Golf Course, Preservation	Building: \$1,123,500
Sq. Ft. Other: 0	Tax/Year: \$780/2024	Land: \$363,400
Total Sq. Ft. 2,493	Neighborhood: Bluestone	Total: \$1,486,900
Maint./Assoc. \$1,763 / \$0	Flood Zone : Zone X - Tool	Stories / CPR: Three / No
Parking: Covered - 2, Garage, Guest, Open - 2	Frontage: Golf Course, Preservation	
Zoning : 05 - R-5 Residential District	City, Coastline, Garden, Golf Course,	
	View: Marina/Canal, Mountain, Ocean, Sunset	

Public Remarks: Welcome to enchanting Kamahele Street in the unique community of Bluestone. Nestled in a serene, forest-like setting, spacious townhomes grace the hillside overlooking the fairways of Mid-Pacific Country Club. The gated community has two entrances, and the Kamahele side is known for its peaceful atmosphere. Residents escape the hustle & bustle and enjoy serene surroundings. Resting on the lanai of this home, you'll be delighted by the expansive views. From this vantage point, one can see 180 degrees from the majestic Koolau Mountains, over the golf course and canal to Kailua Town, onto glimpses of the sparkling water of Kailua Bay. Everywhere you look is a visual reminder of the stunning natural beauty of Hawaii. The interior of this unit has been updated over the years with beautiful Brazilian Cherry flooring on the main level and primary suite. Downstairs, a lovely Mahogany flooring adorns the lower bedrooms. The kitchen has been opened to the dining area, and solid Cherry wood cabinets complemented by sleek black granite countertops surround a well-appointed space. This comfortable home feels like a sanctuary and is a lovely place from which to experience the Kailua lifestyle. **Sale Conditions:** None **Schools:** , , * [Request Showing](#), [Photos](#), [History](#), [Maps](#), [Deed](#), [Watch List](#), [Tax Info](#)



Address	Price	Bd & Bth	Living / Avg.	Land Avg.	Lanai	Occ.	FL	DOM
1208C Kamahele Street 2602	\$1,445,000	3 & 2/1	1,946 \$743	2,309,421 \$1	547	73%	1	45

Address	Tax Maint. Ass.	Assessed Land	Assessed Building	Assessed Total	Ratio	Year & Remodeled
1208C Kamahele Street 2602	\$780 \$1,763 \$0	\$363,400	\$1,123,500	\$1,486,900	97%	1979 & NA

[1208C Kamahele Street 2602](#) - MLS#: [202404056](#) - Welcome to enchanting Kamahele Street in the unique community of Bluestone. Nestled in a serene, forest-like setting, spacious townhomes grace the hillside overlooking the fairways of Mid-Pacific Country Club. The gated community has two entrances, and the Kamahele side is known for its peaceful atmosphere. Residents escape the hustle & bustle and enjoy serene surroundings. Resting on the lanai of this home, you'll be delighted by the expansive views. From this vantage point, one can see 180 degrees from the majestic Koolau Mountains, over the golf course and canal to Kailua Town, onto glimpses of the sparkling water of Kailua Bay. Everywhere you look is a visual reminder of the stunning natural beauty of Hawaii. The interior of this unit has been updated over the years with beautiful Brazilian Cherry flooring on the main level and primary suite. Downstairs, a lovely Mahogany flooring adorns the lower bedrooms. The kitchen has been opened to the dining area, and solid Cherry wood cabinets complemented by sleek black granite countertops surround a well-appointed space. This comfortable home feels like a sanctuary and is a lovely place from which to experience the Kailua lifestyle. **Region:** Kailua **Neighborhood:** Bluestone **Condition:** Excellent **Parking:** Covered - 2, Garage, Guest, Open - 2 **Total Parking:** 2 **View:** City, Coastline, Garden, Golf Course, Marina/Canal, Mountain, Ocean, Sunset **Frontage:** Golf Course, Preservation **Pool:** **Zoning:** 05 - R-5 Residential District **Sale Conditions:** None **Schools:** , , * [Request Showing](#), [Photos](#), [History](#), [Maps](#), [Deed](#), [Watch List](#), [Tax Info](#)

DOM = Days on Market, Occ. = Occupancy, FL = Floor Number