

## **Summer Palace 1848 Kahakai Drive Unit 1504, Honolulu 96814 \* Summer Palace \***

**\$508,000**

Beds: **1**  
Bath: **1/0**  
Living Sq. Ft.: **542**  
Land Sq. Ft.: **0**  
Lanai Sq. Ft.: **106**  
Sq. Ft. Other: **0**  
Total Sq. Ft. **648**  
Maint./Assoc. **\$851 / \$0**

MLS#: **202404063, FS**  
Status: **Active**  
List Date & DOM: **02-22-2024 & 80**  
Condition: **Above Average**  
Frontage:  
Tax/Year: **\$142/2024**  
Neighborhood: **Ala Moana**  
**Flood Zone: Zone AE - Tool**

Year Built: **1976**  
Remodeled:  
Total Parking: **1**  
**Assessed Value**  
Building: **\$450,100**  
Land: **\$35,600**  
Total: **\$485,700**  
Stories / CPR: / **No**

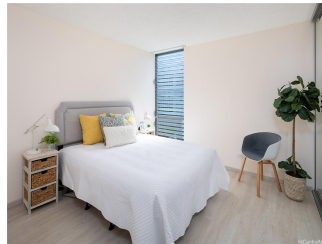
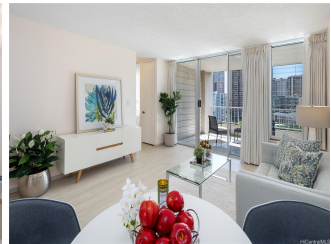
Parking: **Covered - 1**

**Zoning: 12 - A-2 Medium Density Apartme**

Frontage:

View: **Marina/Canal, Ocean**

**Public Remarks:** Welcome to Summer Palace, where urban living blends with island paradise in the heart of Honolulu. This meticulously designed 1-bedroom, 1-bathroom unit spans 542 sq. ft. and features a spacious 106 sq. ft. lanai and one covered parking space, alongside ample guest parking. Nestled adjacent to the Convention Center, it offers captivating views of Ala Wai Canal and the ocean, with Waikiki, Ala Moana Shopping Center, Magic Island, Ala Wai Yacht Harbor and a myriad of dining, shopping and entertainment options just blocks away. Moreover, enjoy the added convenience of the building's proximity to public transportation, facilitating effortless commuting for residents. This pet-friendly property (verify) boasts modern amenities including a washer/dryer, window A/C, dishwasher, new refrigerator, refreshed paint and newly installed vinyl flooring and lighting. Maintenance fees encompass electricity, water, hot water, sewer, with other fees covering for basic cable and internet services. Don't let this rare opportunity slip away - seize your chance to own a slice of paradise in one of Honolulu's most sought-after location. Reach out to your agent today to arrange a private showing! **Sale Conditions:** None  
**Schools:** , , \* [Request Showing](#), [Photos](#), [History](#), [Maps](#), [Deed](#), [Watch List](#), [Tax Info](#)



Address	Price	Bd & Bth	Living / Avg.	Land   Avg.	Lanai	Occ.	FL	DOM
<a href="#">1848 Kahakai Drive 1504</a>	<a href="#">\$508,000</a>	1 & 1/0	542   \$937	0   \$inf	106	34%	15	80

Address	Tax   Maint.   Ass.	Assessed Land	Assessed Building	Assessed Total	Ratio	Year & Remodeled
<a href="#">1848 Kahakai Drive 1504</a>	\$142   \$851   \$0	\$35,600	\$450,100	\$485,700	105%	1976 & NA

<a href="#">1848 Kahakai Drive 1504</a> - MLS#: <a href="#">202404063</a> - Welcome to Summer Palace, where urban living blends with island paradise in the heart of Honolulu. This meticulously designed 1-bedroom, 1-bathroom unit spans 542 sq. ft. and features a spacious 106 sq. ft. lanai and one covered parking space, alongside ample guest parking. Nestled adjacent to the Convention Center, it offers captivating views of Ala Wai Canal and the ocean, with Waikiki, Ala Moana Shopping Center, Magic Island, Ala Wai Yacht Harbor and a myriad of dining, shopping and entertainment options just blocks away. Moreover, enjoy the added convenience of the building's proximity to public transportation, facilitating effortless commuting for residents. This pet-friendly property (verify) boasts modern amenities including a washer/dryer, window A/C, dishwasher, new refrigerator, refreshed paint and newly installed vinyl flooring and lighting. Maintenance fees encompass electricity, water, hot water, sewer, with other fees covering for basic cable and internet services. Don't let this rare opportunity slip away - seize your chance to own a slice of paradise in one of Honolulu's most sought-after location. Reach out to your agent today to arrange a private showing! <b>Region:</b> Metro <b>Neighborhood:</b> Ala Moana <b>Condition:</b> Above Average <b>Parking:</b> Covered - 1 <b>Total Parking:</b> 1 <b>View:</b> Marina/Canal, Ocean <b>Frontage:</b> <b>Pool:</b> <b>Zoning:</b> 12 - A-2 Medium Density Apartme <b>Sale Conditions:</b> None <b>Schools:</b> , , * <a href="#">Request Showing</a> , <a href="#">Photos</a> , <a href="#">History</a> , <a href="#">Maps</a> , <a href="#">Deed</a> , <a href="#">Watch List</a> , <a href="#">Tax Info</a>						
---	--	--	--	--	--	--

DOM = Days on Market, Occ. = Occupancy, FL = Floor Number