

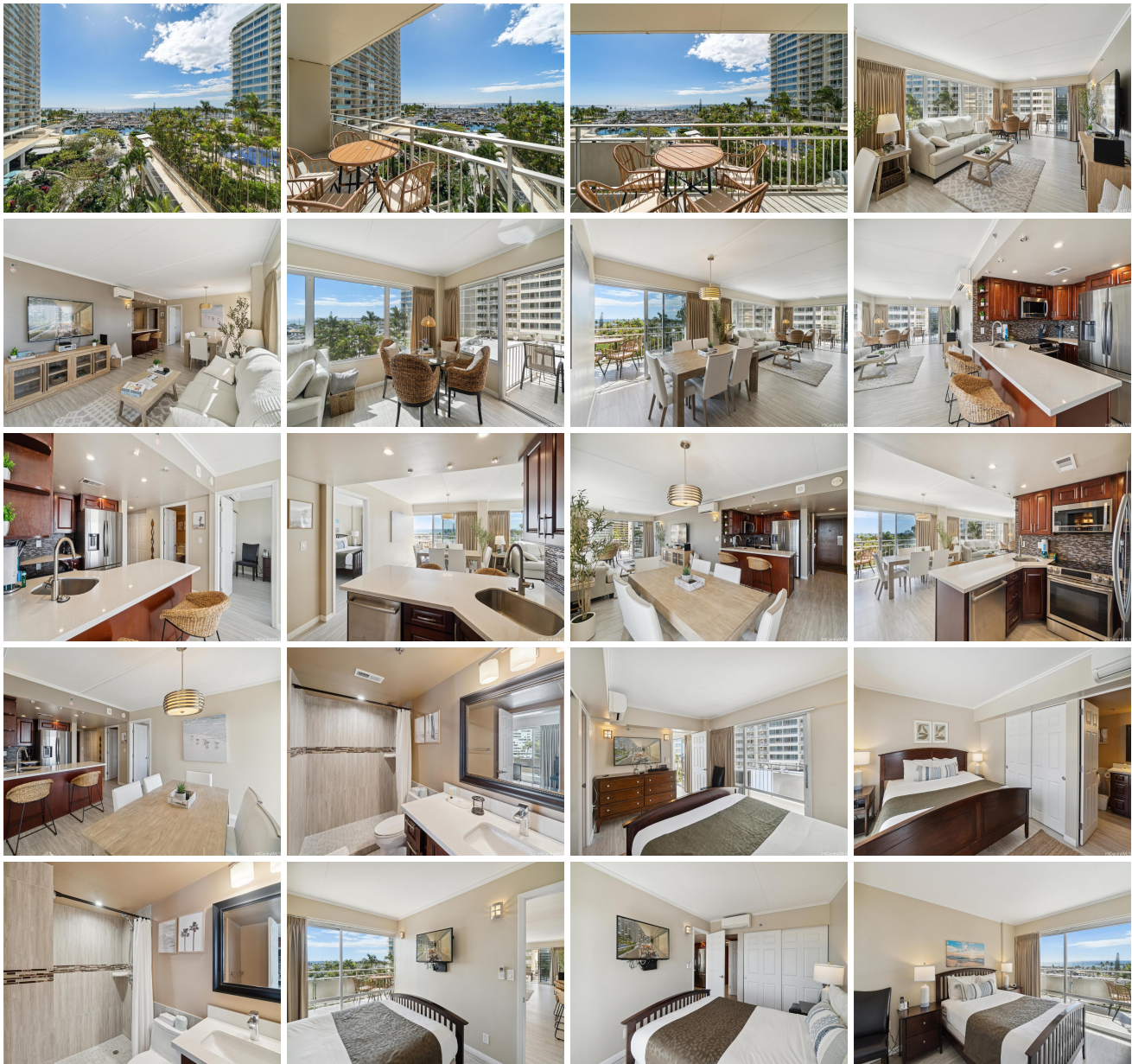
**Ilikai Apt Bldg 1777 Ala Moana Boulevard Unit 510, Honolulu 96815 \* Ilikai Apt Bldg \***

**\$1,988,000**

Beds: <b>2</b>	MLS#: <b><u>202404082</u>, FS</b>	Year Built: <b>1965</b>
Bath: <b>2/0</b>	Status: <b>Active</b>	Remodeled: <b>2024</b>
Living Sq. Ft.: <b>1,000</b>	List Date & DOM: <b>03-01-2024 &amp; 68</b>	Total Parking: <b>0</b>
Land Sq. Ft.: <b>0</b>	Condition: <b>Excellent</b>	<a href="#">Assessed Value</a>
Lanai Sq. Ft.: <b>240</b>	Frontage: <b>Marina, Ocean, Waterfront</b>	Building: <b>\$1,408,000</b>
Sq. Ft. Other: <b>0</b>	Tax/Year: <b>\$1,942/2024</b>	Land: <b>\$249,700</b>
Total Sq. Ft. <b>1,240</b>	Neighborhood: <b>Waikiki</b>	Total: <b>\$1,657,700</b>
Maint./Assoc. <b>\$1,456 / \$0</b>	<a href="#">Flood Zone</a> : <b>Zone AE - <u>Tool</u></b>	Stories / CPR: <b>21+ / No</b>
Parking: <b>None</b>	Frontage: <b>Marina, Ocean, Waterfront</b>	
<a href="#">Zoning</a> : <b>X6 - Resort Mixed Use Precinct</b>	View: <b>Marina/Canal, Ocean, Sunset</b>	

**Public Remarks:** Direct views of Hawaiian sunsets, sailboats, and the Pacific Ocean...this what this amazing income producing corner unit at the Ilikai offers. The -10 stack looks straight out at the horizon and high enough to offer a blend of cool blue ocean and soothing green treetop views. At 1000sf, this 2-bedroom, 2-bathroom layout features an expansive living room to maximize light and ocean views flanked by two en suites at opposite ends of the unit. An open kitchen also looks out to the boat harbor and two large lanais offer outdoor living space as well. Resilient tile floors throughout, stainless steel kitchen appliances, and cooled by split A/C's. Fully furnished and currently in a vacation rental pool with fantastic bookings. Here is your opportunity to own your piece of paradise while subsidizing the cost! See the unbranded website for a video tour.

**Sale Conditions:** None **Schools:** , , \* [Request Showing](#), [Photos](#), [History](#), [Maps](#), [Deed](#), [Watch List](#), [Tax Info](#)





Address	Price	Bd & Bth	Living / Avg.	Land   Avg.	Lanai	Occ.	FL	DOM
<a href="#">1777 Ala Moana Boulevard 510</a>	<a href="#">\$1,988,000</a>	2 & 2/0	1,000   \$1,988	0   \$inf	240	8%	5	68

Address	Tax   Maint.   Ass.	Assessed Land	Assessed Building	Assessed Total	Ratio	Year & Remodeled
<a href="#">1777 Ala Moana Boulevard 510</a>	\$1,942   \$1,456   \$0	\$249,700	\$1,408,000	\$1,657,700	120%	1965 & 2024

[1777 Ala Moana Boulevard 510](#) - MLS#: [202404082](#) - Direct views of Hawaiian sunsets, sailboats, and the Pacific Ocean...this what this amazing income producing corner unit at the Ilikai offers. The -10 stack looks straight out at the horizon and high enough to offer a blend of cool blue ocean and soothing green treetop views. At 1000sf, this 2-bedroom, 2-bathroom layout features an expansive living room to maximize light and ocean views flanked by two en suites at opposite ends of the unit. An open kitchen also looks out to the boat harbor and two large lanais offer outdoor living space as well. Resilient tile floors throughout, stainless steel kitchen appliances, and cooled by split A/C's. Fully furnished and currently in a vacation rental pool with fantastic bookings. Here is your opportunity to own your piece of paradise while subsidizing the cost! See the unbranded website for a video tour. **Region:** Metro **Neighborhood:** Waikiki **Condition:** Excellent **Parking:** None **Total Parking:** 0 **View:** Marina/Canal, Ocean, Sunset **Frontage:** Marina,Ocean,Waterfront **Pool:** **Zoning:** X6 - Resort Mixed Use Precinct **Sale Conditions:** None **Schools:** , , \* [Request Showing](#), [Photos](#), [History](#), [Maps](#), [Deed](#), [Watch List](#), [Tax Info](#)

DOM = Days on Market, Occ. = Occupancy, FL = Floor Number