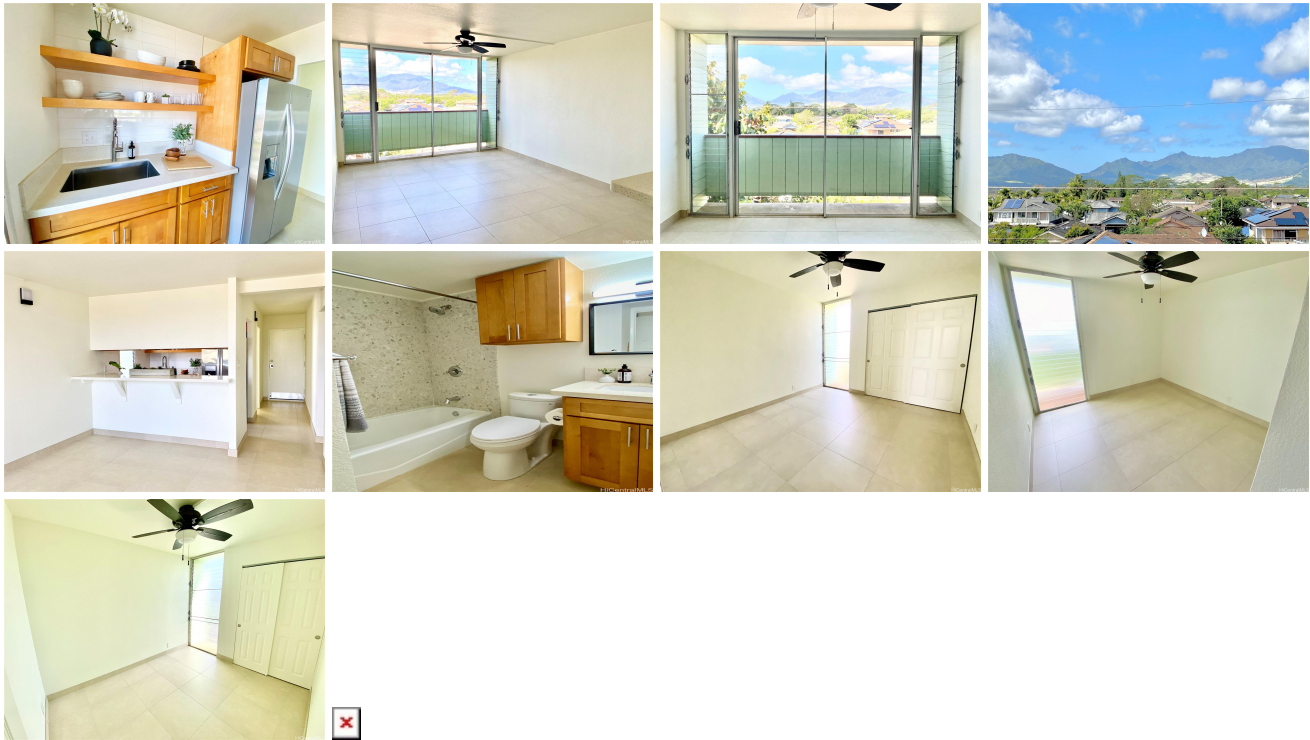


**Lalawai Hale 1015 Aheaha Avenue Unit 306, Wahiawa 96786 \* Lalawai Hale \* \$365,000 \***

**Originally \$380,000**

Beds: <b>3</b>	MLS#: <b>202404199, FS</b>	Year Built: <b>1974</b>
Bath: <b>1/0</b>	Status: <b>Active Under Contract</b>	Remodeled: <b>2024</b>
Living Sq. Ft.: <b>841</b>	List Date & DOM: <b>02-25-2024 &amp; 49</b>	Total Parking: <b>1</b>
Land Sq. Ft.: <b>139,174</b>	Condition: <b>Excellent</b>	<a href="#">Assessed Value</a>
Lanai Sq. Ft.: <b>24</b>	Frontage:	Building: <b>\$208,100</b>
Sq. Ft. Other: <b>0</b>	Tax/Year: <b>\$96/2023</b>	Land: <b>\$119,600</b>
Total Sq. Ft. <b>865</b>	Neighborhood: <b>Whitmore Village</b>	Total: <b>\$327,700</b>
Maint./Assoc. <b>\$438 / \$0</b>	<a href="#">Flood Zone</a> : <b>Zone D - Tool</b>	Stories / CPR: <b>Three / No</b>
Parking: <b>Assigned, Open - 1, Street</b>	Frontage:	
<a href="#">Zoning</a> : <b>12 - A-2 Medium Density Apartme</b>	View: <b>Mountain, Sunset</b>	

**Public Remarks:** Excellent opportunity for first time buyers or investors to own a rarely available corner unit 3 bedroom 1 bath located on the third floor. This unit has gorgeous mountain views, ample breeze and lots of sun light. Move-in ready, with new paint throughout, updated kitchen and fixtures. Low maintenance fees include sewer, water and trash. Lalawai Hale is located close to Schofield Barracks, Wheeler Air Field, JBPHH Wahiawa Annex/NCTAMS. Also close to restaurants, schools, beautiful beaches on the Northshore and easy access to bus routes. Vacant and easy to see on short notice so call your Realtor to schedule a showing today. Don't miss out on your new home! **Sale Conditions:** None **Schools:** , , \* [Request Showing, Photos, History, Maps, Deed, Watch List, Tax Info](#)



Address	Price	Bd & Bth	Living / Avg.	Land   Avg.	Lanai	Occ.	FL	DOM
<a href="#">1015 Aheaha Avenue 306</a>	<b>\$365,000</b>	3 & 1/0	841   \$434	139,174   \$3	24	49%	3	49

Address	Tax   Maint.   Ass.	Assessed Land	Assessed Building	Assessed Total	Ratio	Year & Remodeled
<a href="#">1015 Aheaha Avenue 306</a>	\$96   \$438   \$0	\$119,600	\$208,100	\$327,700	111%	1974 & 2024

[1015 Aheaha Avenue 306](#) - MLS#: [202404199](#) - Original price was \$380,000 - Excellent opportunity for first time buyers or investors to own a rarely available corner unit 3 bedroom 1 bath located on the third floor. This unit has gorgeous mountain views, ample breeze and lots of sun light. Move-in ready, with new paint throughout, updated kitchen and fixtures. Low maintenance fees include sewer, water and trash. Lalawai Hale is located close to Schofield Barracks, Wheeler Air Field, JBPHH Wahiawa Annex/NCTAMS. Also close to restaurants, schools, beautiful beaches on the Northshore and easy access to bus routes. Vacant and easy to see on short notice so call your Realtor to schedule a showing today. Don't miss out on your new home! **Region:** Central **Neighborhood:** Whitmore Village **Condition:** Excellent **Parking:** Assigned, Open - 1, Street **Total Parking:** 1 **View:** Mountain, Sunset **Frontage:** Pool: **Zoning:** 12 - A-2 Medium Density Apartme **Sale Conditions:** None **Schools:** , , \* [Request Showing, Photos, History, Maps, Deed, Watch List, Tax Info](#)

DOM = Days on Market, Occ. = Occupancy, FL = Floor Number