

**One Kalakaua Senior Living 1314 Kalakaua Avenue Unit 502, Honolulu 96826 \* One Kalakaua Senior Living \* \$495,000**

Beds: <b>2</b>	MLS#: <b><u>202404230</u>, FS</b>	Year Built: <b>1996</b>
Bath: <b>2/0</b>	Status: <b>Active</b>	Remodeled:
Living Sq. Ft.: <b>832</b>	List Date & DOM: <b>03-07-2024 &amp; 68</b>	Total Parking: <b>1</b>
Land Sq. Ft.: <b>0</b>	Condition: <b>Above Average</b>	<a href="#">Assessed Value</a>
Lanai Sq. Ft.: <b>0</b>	Frontage: <b>Other</b>	Building: <b>\$620,400</b>
Sq. Ft. Other: <b>0</b>	Tax/Year: <b>\$95/2023</b>	Land: <b>\$69,300</b>
Total Sq. Ft. <b>832</b>	Neighborhood: <b>Makiki Area</b>	Total: <b>\$689,700</b>
Maint./Assoc. <b>\$2,623 / \$0</b>	<a href="#">Flood Zone</a> : <b>Zone X - Tool</b>	Stories / CPR: <b>One / No</b>

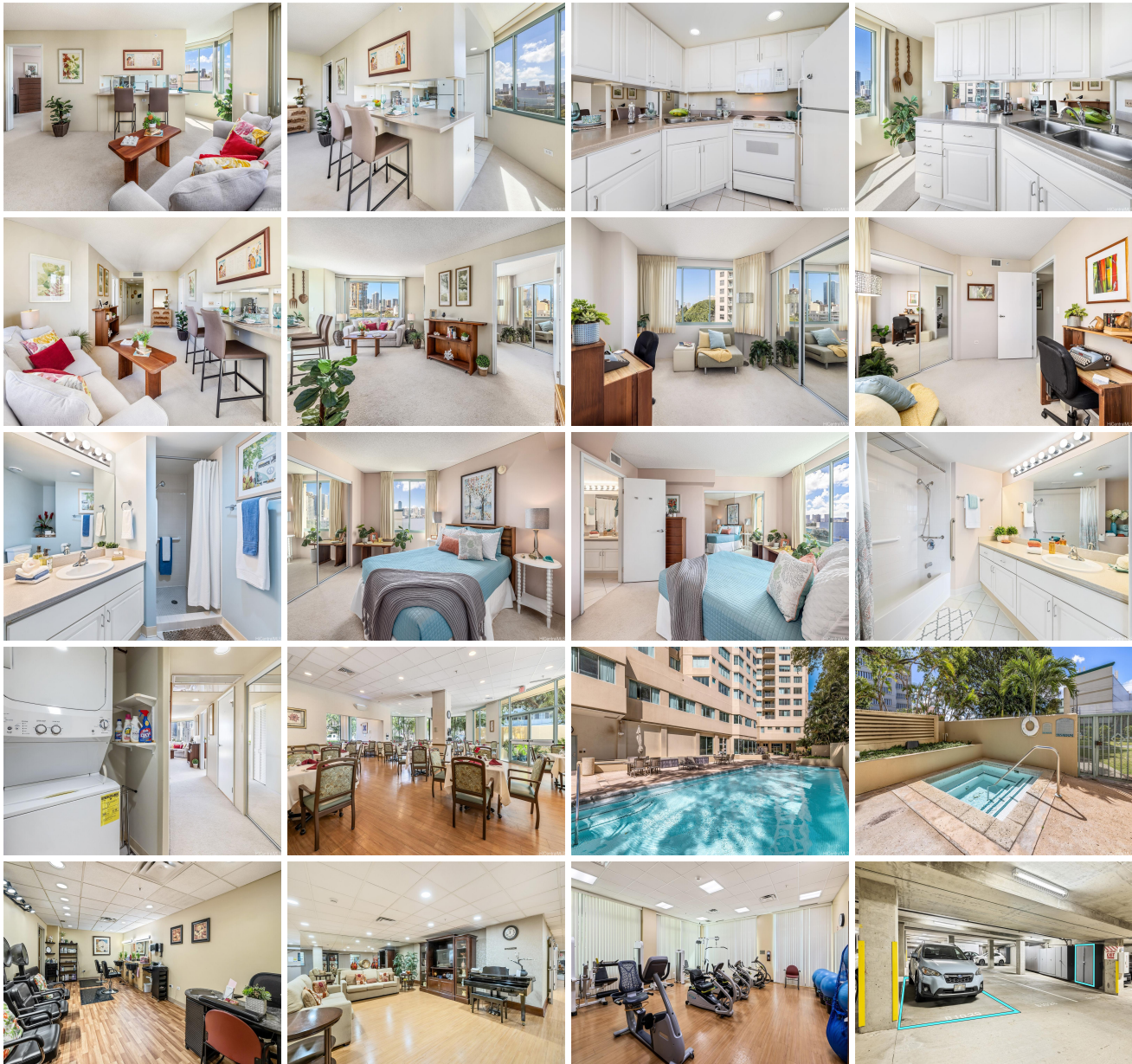
**Assigned, Covered - 1, Garage,**  
Parking: **Guest, Open - 3+, Secured Entry, Street**

Frontage: **Other**

[Zoning](#): **33 - BMX-3 Community Business M**

View: **City**

**Public Remarks:** Discover affordable comfort and living at Hawaii's only fee simple, full service senior living community. Responsiveness and safety is paramount with a friendly front desk, 24/7 security, providing peace of mind. Indulge in daily culinary delights at home with a delicious daily meal credit and enjoy a pristine retreat with hassle-free weekly housekeeping. The spacious 2-bedroom, 2-bath, 1-parking unit features a full kitchen, in-unit washer/dryer, covered parking, storage, and centralized A/C for ultimate comfort. Embrace an active lifestyle with fitness and craft classes, a heated pool and spa. Situated in a convenient location close to stores and restaurants, this residence offers easy living. Additional amenities include a library, game room, and an on-site beauty parlor. Experience refined full service senior living at its best - schedule a showing today! **Sale Conditions:** None **Schools:** [Kaahumanu](#), [Washington](#), [Mckinley](#) \* [Request Showing](#), [Photos](#), [History](#), [Maps](#), [Deed](#), [Watch List](#), [Tax Info](#)





Address	Price	Bd & Bth	Living / Avg.	Land   Avg.	Lanai	Occ.	FL	DOM
<a href="#">1314 Kalakaua Avenue 502</a>	<a href="#">\$495,000</a>	2 & 2/0	832   \$595	0   \$inf	0	42%	5	68

Address	Tax   Maint.   Ass.	Assessed Land	Assessed Building	Assessed Total	Ratio	Year & Remodeled
<a href="#">1314 Kalakaua Avenue 502</a>	\$95   \$2,623   \$0	\$69,300	\$620,400	\$689,700	72%	1996 & NA

<a href="#">1314 Kalakaua Avenue 502</a> - MLS#: <a href="#">202404230</a> - Discover affordable comfort and living at Hawaii's only fee simple, full service senior living community. Responsiveness and safety is paramount with a friendly front desk, 24/7 security, providing peace of mind. Indulge in daily culinary delights at home with a delicious daily meal credit and enjoy a pristine retreat with hassle-free weekly housekeeping. The spacious 2-bedroom, 2-bath, 1-parking unit features a full kitchen, in-unit washer/dryer, covered parking, storage, and centralized A/C for ultimate comfort. Embrace an active lifestyle with fitness and craft classes, a heated pool and spa. Situated in a convenient location close to stores and restaurants, this residence offers easy living. Additional amenities include a library, game room, and an on-site beauty parlor. Experience refined full service senior living at its best - schedule a showing today! <b>Region:</b> Metro <b>Neighborhood:</b> Makiki Area <b>Condition:</b> Above Average <b>Parking:</b> Assigned, Covered - 1, Garage, Guest, Open - 3+, Secured Entry, Street <b>Total Parking:</b> 1 <b>View:</b> City <b>Frontage:</b> Other <b>Pool:</b> <b>Zoning:</b> 33 - BMX-3 Community Business M <b>Sale Conditions:</b> None <b>Schools:</b> <a href="#">Kaahumanu</a> , <a href="#">Washington</a> , <a href="#">Mckinley</a> * <a href="#">Request Showing</a> , <a href="#">Photos</a> , <a href="#">History</a> , <a href="#">Maps</a> , <a href="#">Deed</a> , <a href="#">Watch List</a> , <a href="#">Tax Info</a>						
--	--	--	--	--	--	--

DOM = Days on Market, Occ. = Occupancy, FL = Floor Number