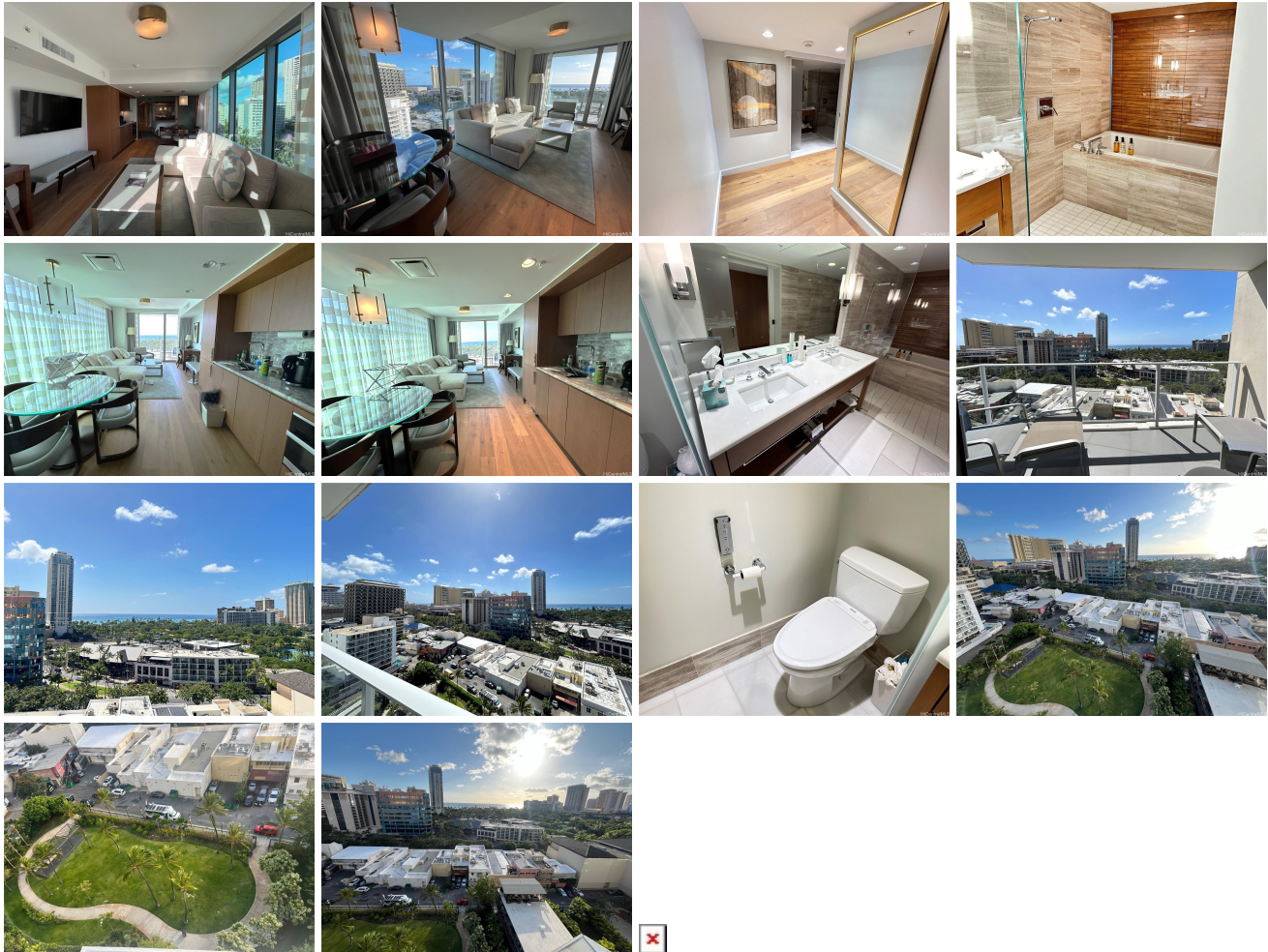


## The Ritz-Carlton Residences Twr 2 - 383 2139 Kuhio Avenue Unit 1212, Honolulu 96815 \*

### The Ritz-Carlton Residences Twr 2 - 383 \* \$789,000

Beds: <b>0</b>	MLS#: <b>202404263, FS</b>	Year Built: <b>2018</b>
Bath: <b>1/0</b>	Status: <b>Active Under Contract</b>	Remodeled:
Living Sq. Ft.: <b>629</b>	List Date & DOM: <b>02-27-2024 &amp; 62</b>	Total Parking: <b>1</b>
Land Sq. Ft.: <b>0</b>	Condition: <b>Excellent</b>	<a href="#">Assessed Value</a>
Lanai Sq. Ft.: <b>75</b>	Frontage:	Building: <b>\$661,800</b>
Sq. Ft. Other: <b>0</b>	Tax/Year: <b>\$1,104/2023</b>	Land: <b>\$124,400</b>
Total Sq. Ft. <b>704</b>	Neighborhood: <b>Waikiki</b>	Total: <b>\$786,200</b>
Maint./Assoc. <b>\$1,168 / \$0</b>	<a href="#">Flood Zone</a> : <b>Zone AO - Tool</b>	Stories / CPR: / <b>No</b>
Parking: <b>None</b>	Frontage:	
<a href="#">Zoning</a> : <b>X6 - Resort Mixed Use Precinct</b>	View: <b>City, Ocean, Sunset</b>	

**Public Remarks:** The Ritz-Carlton Waikiki studio rooms are known for their luxurious and elegant design, offering guests a comfortable and upscale experience. The rooms are well-appointed with modern amenities and feature stunning views of Waikiki Beach and the Pacific Ocean. DH tower, larger corner studio, like 1 bed. Enjoy the gorgeous Waikiki ocean, park, and city view with a new level of luxury resort living at the Ritz Carlton Residences, Waikiki Beach. This exceptional, fully furnished Diamond Head tower residence has a modern design and sophisticated finishes with an open floor plan, kitchen, soaking tub, king-size bed, full-size sofa sleeper in the living room, and washer/dryer. Resort amenities & services with an infinity pool, whirlpool spa, fitness center, restaurants, bar, concierge, valet service, and more. Shopping, dining, and beach parks within steps. **Sale Conditions:** None **Schools:** , , \* [Request Showing](#), [Photos](#), [History](#), [Maps](#), [Deed](#), [Watch List](#), [Tax Info](#)



Address	Price	Bd & Bth	Living / Avg.	Land   Avg.	Lanai	Occ.	FL	DOM
<a href="#">2139 Kuhio Avenue 1212</a>	<b>\$789,000</b>	0 & 1/0	629   \$1,254	0   \$inf	75	1%	12	62

Address	Tax   Maint.   Ass.	Assessed Land	Assessed Building	Assessed Total	Ratio	Year & Remodeled
<a href="#">2139 Kuhio Avenue 1212</a>	\$1,104   \$1,168   \$0	\$124,400	\$661,800	\$786,200	100%	2018 & NA

[2139 Kuhio Avenue 1212](#) - MLS#: [202404263](#) - The Ritz-Carlton Waikiki studio rooms are known for their luxurious and elegant design, offering guests a comfortable and upscale experience. The rooms are well-appointed with modern amenities and feature stunning views of Waikiki Beach and the Pacific Ocean. DH tower, larger corner studio, like 1 bed. Enjoy the gorgeous Waikiki ocean, park, and city view with a new level of luxury resort living at the Ritz Carlton Residences, Waikiki Beach. This exceptional, fully furnished Diamond Head tower residence has a modern design and sophisticated finishes with an open floor plan, kitchen, soaking tub, king-size bed, full-size sofa sleeper in the living room, and washer/dryer. Resort amenities & services with an infinity pool, whirlpool spa, fitness center, restaurants, bar, concierge, valet service, and more. Shopping, dining, and beach parks within steps. **Region:** Metro **Neighborhood:** Waikiki **Condition:** Excellent **Parking:** None **Total Parking:** 1 **View:** City, Ocean, Sunset **Frontage:** **Pool:** **Zoning:** X6 - Resort Mixed Use Precinct **Sale Conditions:** None **Schools:** , , \* [Request Showing](#), [Photos](#), [History](#), [Maps](#), [Deed](#), [Watch List](#), [Tax Info](#)

DOM = Days on Market, Occ. = Occupancy, FL = Floor Number