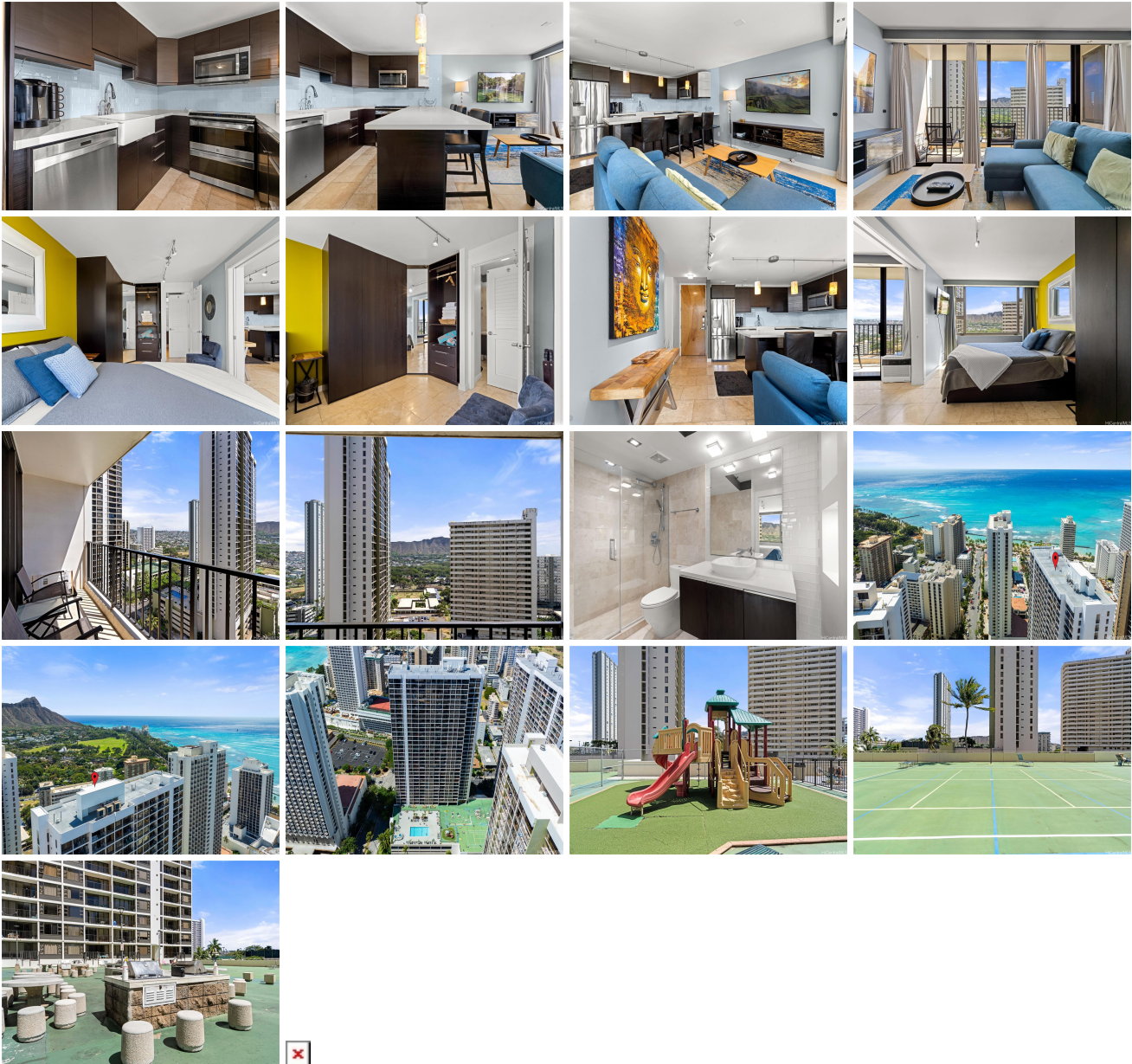


## **Waikiki Banyan 201 Ohua Avenue Unit 2107, Honolulu 96815 \* Waikiki Banyan \* \$768,000**

**\* Originally \$788,000**

Beds: <b>1</b>	MLS#: <b>202404265, FS</b>	Year Built: <b>1977</b>
Bath: <b>1/0</b>	Status: <b>Active Under Contract</b>	Remodeled:
Living Sq. Ft.: <b>533</b>	List Date & DOM: <b>03-02-2024 &amp; 41</b>	Total Parking: <b>1</b>
Land Sq. Ft.: <b>99,796</b>	Condition: <b>Excellent</b>	<a href="#">Assessed Value</a>
Lanai Sq. Ft.: <b>67</b>	Frontage: <b>Other</b>	Building: <b>\$441,900</b>
Sq. Ft. Other: <b>0</b>	Tax/Year: <b>\$161/2023</b>	Land: <b>\$109,000</b>
Total Sq. Ft. <b>600</b>	Neighborhood: <b>Waikiki</b>	Total: <b>\$550,900</b>
Maint./Assoc. <b>\$774 / \$0</b>	<a href="#">Flood Zone</a> : <b>Zone AE - Tool</b>	Stories / CPR: <b>21+ / No</b>
Parking: <b>Unassigned</b>	Frontage: <b>Other</b>	
<a href="#">Zoning</a> : <b>X2 - Apartment Precinct</b>	View: <b>Coastline, Ocean, Sunrise</b>	

**Public Remarks:** Welcome to your slice of paradise at the Waikiki Banyan! Nestled in the heart of Waikiki on the vibrant island of Oahu, this condominium offers the perfect blend of comfort, convenience, and Hawaiian charm. Call this your home or take advantage of the Short Term Rental Opportunities the Waikiki Banyan provides their owners. Situated on the 21st floor, this meticulously maintained unit boasts breathtaking views of Waikiki's skyline and Pacific Ocean. Start your day with a cup of locally sourced Kona coffee on your private lanai, as you watch the sun rise over Diamond Head, casting its golden hues across the azure waters below. The open layout seamlessly connects the living, dining, and kitchen areas, creating an ideal space for entertaining family and friends. Whip up a feast in the fully equipped kitchen, complete with modern appliances and ample counter space for preparing your favorite Hawaiian delicacies. **Sale Conditions:** None **Schools:** , , \* [Request Showing](#), [Photos](#), [History](#), [Maps](#), [Deed](#), [Watch List](#), [Tax Info](#)



Address	Price	Bd & Bth	Living / Avg.	Land   Avg.	Lanai	Occ.	FL	DOM
<a href="#">201 Ohua Avenue 2107</a>	<b>\$768,000</b>	1 & 1/0	533   \$1,441	99,796   \$8	67	10%	21	41

Address	Tax   Maint.   Ass.	Assessed Land	Assessed Building	Assessed Total	Ratio	Year & Remodeled
<a href="#">201 Ohua Avenue 2107</a>	\$161   \$774   \$0	\$109,000	\$441,900	\$550,900	139%	1977 & NA

[201 Ohua Avenue 2107](#) - MLS#: [202404265](#) - Original price was \$788,000 - Welcome to your slice of paradise at the Waikiki Banyan! Nestled in the heart of Waikiki on the vibrant island of Oahu, this condominium offers the perfect blend of comfort, convenience, and Hawaiian charm. Call this your home or take advantage of the Short Term Rental Opportunities the Waikiki Banyan provides their owners. Situated on the 21st floor, this meticulously maintained unit boasts breathtaking views of Waikiki's skyline and Pacific Ocean. Start your day with a cup of locally sourced Kona coffee on your private lanai, as you watch the sun rise over Diamond Head, casting its golden hues across the azure waters below. The open layout seamlessly connects the living, dining, and kitchen areas, creating an ideal space for entertaining family and friends. Whip up a feast in the fully equipped kitchen, complete with modern appliances and ample counter space for preparing your favorite Hawaiian delicacies. **Region:** Metro **Neighborhood:** Waikiki **Condition:** Excellent **Parking:** Unassigned **Total Parking:** 1 **View:** Coastline, Ocean, Sunrise **Frontage:** Other **Pool:** **Zoning:** X2 - Apartment Precinct **Sale Conditions:** None **Schools:** , , \*  
[Request Showing](#), [Photos](#), [History](#), [Maps](#), [Deed](#), [Watch List](#), [Tax Info](#)

DOM = Days on Market, Occ. = Occupancy, FL = Floor Number