

Craigside 21 Craigside Place Unit III/8C, Honolulu 96817 * Craigside * \$355,000

Beds: **0**

MLS#: **202404266, FS**

Year Built: **1965**

Bath: **1/0**

Status: **Active Under Contract**

Remodeled:

Living Sq. Ft.: **480**

List Date & DOM: **03-08-2024 & 45**

Total Parking: **1**

Land Sq. Ft.: **0**

Condition: **Above Average**

[Assessed Value](#)

Lanai Sq. Ft.: **0**

Frontage: **Stream/Canal**

Building: **\$327,600**

Sq. Ft. Other: **0**

Tax/Year: **\$107/2024**

Land: **\$36,200**

Total Sq. Ft. **480**

Neighborhood: **Nuuanu-lower**

Total: **\$363,800**

Maint./Assoc. **\$675 / \$0**

[Flood Zone](#): **Zone AE - Tool**

Stories / CPR: **8-14 / No**

Parking: **Assigned, Covered - 1, Garage, Guest, Secured Entry, Street**

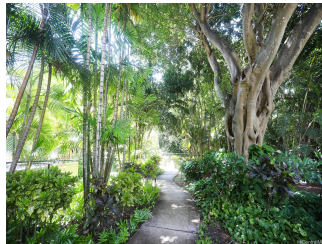
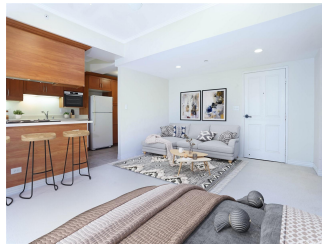
Frontage: **Stream/Canal**

[Zoning](#): **13 - A-3 High Density Apartment**

View: **Garden**

Public Remarks: Welcome to this studio condominium nestled in Nuuanu, situated in the heart of Honolulu. This unit offers the perfect blend of comfort and convenience for those seeking an urban retreat. Experience the best of Honolulu living in this thoughtfully designed and well maintained studio condo. With its desirable amenities, prime location and modern comforts, this is an ideal place to call home in paradise. The kitchen includes a refrigerator, stove/oven & dishwasher. A washer and dryer are conveniently tucked away within the unit, eliminating the need for trips to the laundromat. Other features are an assigned covered parking stall and a large/tall storage unit. No more searching for street parking! The Craigside complex offers it's residents access to resort style amenities such as 2 pools, gym, sauna, tennis court, bbq area, and is pet friendly. Located close to the Pali Highway, you'll have easy & convenient access to Windward Oahu and the cities of Kailua and Kaneohe. Whether you're commuting for work or exploring the island's natural beauty, you'll appreciate the central location and accessibility of this studio in Nuuanu. Some photos have been virtually staged. **Sale Conditions:** None

Schools: , , * [Request Showing](#), [Photos](#), [History](#), [Maps](#), [Deed](#), [Watch List](#), [Tax Info](#)



Address	Price	Bd & Bth	Living / Avg.	Land Avg.	Lanai	Occ.	FL	DOM
21 Craigside Place III/8C	\$355,000	0 & 1/0	480 \$740	0 \$inf	0	72%	9	45

Address	Tax Maint. Ass.	Assessed Land	Assessed Building	Assessed Total	Ratio	Year & Remodeled
21 Craigsides Place III/8C	\$107 \$675 \$0	\$36,200	\$327,600	\$363,800	98%	1965 & NA

[21 Craigsides Place III/8C](#) - MLS#: [202404266](#) - Welcome to this studio condominium nestled in Nuuanu, situated in the heart of Honolulu. This unit offers the perfect blend of comfort and convenience for those seeking an urban retreat. Experience the best of Honolulu living in this thoughtfully designed and well maintained studio condo. With its desirable amenities, prime location and modern comforts, this is an ideal place to call home in paradise. The kitchen includes a refrigerator, stove/oven & dishwasher. A washer and dryer are conveniently tucked away within the unit, eliminating the need for trips to the laundromat. Other features are an assigned covered parking stall and a large/tall storage unit. No more searching for street parking! The Craigsides complex offers it's residents access to resort style amenities such as 2 pools, gym, sauna, tennis court, bbq area, and is pet friendly. Located close to the Pali Highway, you'll have easy & convenient access to Windward Oahu and the cities of Kailua and Kaneohe. Whether you're commuting for work or exploring the island's natural beauty, you'll appreciate the central location and accessibility of this studio in Nuuanu. Some photos have been virtually staged.

Region: Metro **Neighborhood:** Nuuanu-lower **Condition:** Above Average **Parking:** Assigned, Covered - 1, Garage, Guest, Secured Entry, Street **Total Parking:** 1 **View:** Garden **Frontage:** Stream/Canal **Pool:** **Zoning:** 13 - A-3 High Density Apartment **Sale Conditions:** None **Schools:** , , * [Request Showing](#), [Photos](#), [History](#), [Maps](#), [Deed](#), [Watch List](#), [Tax Info](#)

DOM = Days on Market, Occ. = Occupancy, FL = Floor Number