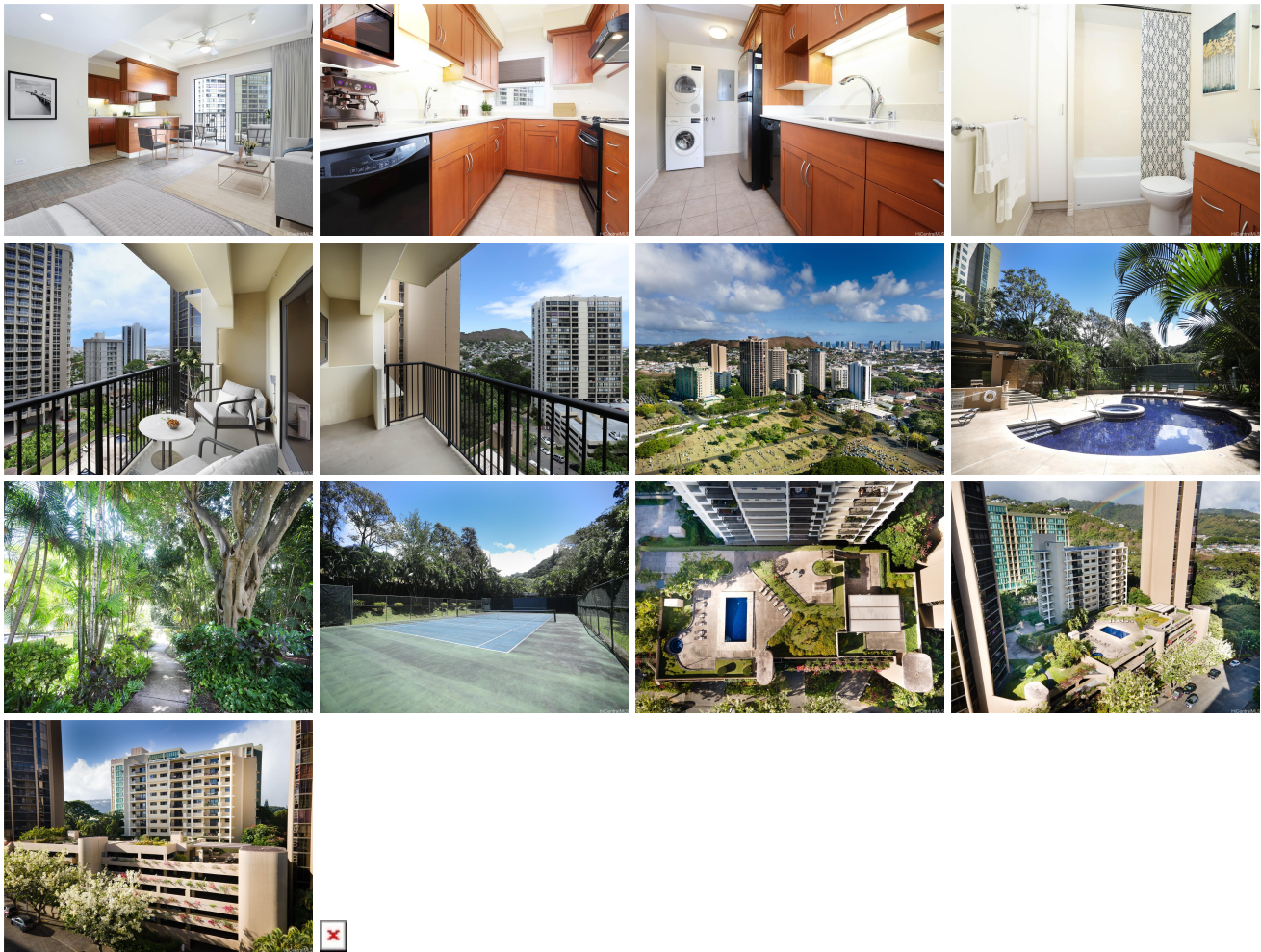


Craigside 21 Craigside Place Unit III/7D, Honolulu 96817 * Craigside * \$355,000

Beds: 0	MLS#: 202404269, FS	Year Built: 1965
Bath: 1/0	Status: Active Under Contract	Remodeled:
Living Sq. Ft.: 480	List Date & DOM: 03-08-2024 & 25	Total Parking: 1
Land Sq. Ft.: 0	Condition: Above Average	Assessed Value
Lanai Sq. Ft.: 0	Frontage: Stream/Canal	Building: \$327,100
Sq. Ft. Other: 0	Tax/Year: \$106/2024	Land: \$36,200
Total Sq. Ft. 480	Neighborhood: Nuuanu-lower	Total: \$363,300
Maint./Assoc. \$675 / \$0	Flood Zone : Zone AE - Tool	Stories / CPR: 8-14 / No
Parking: Assigned, Covered - 1, Garage, Guest, Secured Entry	Frontage: Stream/Canal	
Zoning : 13 - A-3 High Density Apartment	View: City, Garden	

Public Remarks: This lovely boutique building is tucked in the back of Craigside Towers I and II. Craigside III is part of the Craigside Association allowing use of both swimming pools, tennis courts, workout room, and so much more. Split system A/C, in unit washer and dryer, usable lanai and large additional storage locker for each unit are added bonuses. Conveniently located just minutes from downtown. This unit is being offered in AS-IS condition and has been virtually staged. **Sale**

Conditions: None **Schools:** , , * [Request Showing](#), [Photos](#), [History](#), [Maps](#), [Deed](#), [Watch List](#), [Tax Info](#)



Address	Price	Bd & Bth	Living / Avg.	Land Avg.	Lanai	Occ.	FL	DOM
21 Craigside Place III/7D	\$355,000	0 & 1/0	480 \$740	0 \$inf	0	72%	8	25

Address	Tax Maint. Ass.	Assessed Land	Assessed Building	Assessed Total	Ratio	Year & Remodeled
21 Craigside Place III/7D	\$106 \$675 \$0	\$36,200	\$327,100	\$363,300	98%	1965 & NA

[21 Craigsides Place III/7D](#) - MLS#: [202404269](#) - This lovely boutique building is tucked in the back of Craigsides Towers I and II. Craigsides III is part of the Craigsides Association allowing use of both swimming pools, tennis courts, workout room, and so much more. Split system A/C, in unit washer and dryer, usable lanai and large additional storage locker for each unit are added bonuses. Conveniently located just minutes from downtown. This unit is being offered in AS-IS condition and has been virtually staged. **Region:** Metro **Neighborhood:** Nuuanu-lower **Condition:** Above Average **Parking:** Assigned, Covered - 1, Garage, Guest, Secured Entry **Total Parking:** 1 **View:** City, Garden **Frontage:** Stream/Canal **Pool:** **Zoning:** 13 - A-3 High Density Apartment **Sale Conditions:** None **Schools:** , , * [Request Showing](#), [Photos](#), [History](#), [Maps](#), [Deed](#), [Watch List](#), [Tax Info](#)

DOM = Days on Market, Occ. = Occupancy, FL = Floor Number