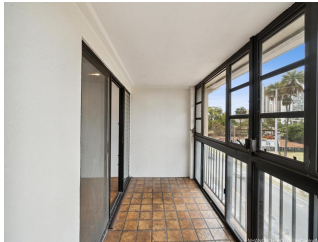


## 465 Kapahulu 465 Kapahulu Avenue Unit 4H, Honolulu 96815 \* 465 Kapahulu \* \$423,000 \*

Originally \$440,000

Beds: <b>2</b>	MLS#: <b>202404400, FS</b>	Year Built: <b>1967</b>
Bath: <b>1/0</b>	Status: <b>Active Under Contract</b>	Remodeled:
Living Sq. Ft.: <b>700</b>	List Date & DOM: <b>03-04-2024 &amp; 61</b>	Total Parking: <b>1</b>
Land Sq. Ft.: <b>0</b>	Condition: <b>Above Average</b>	<a href="#">Assessed Value</a>
Lanai Sq. Ft.: <b>102</b>	Frontage:	Building: <b>\$188,500</b>
Sq. Ft. Other: <b>0</b>	Tax/Year: <b>\$80/2024</b>	Land: <b>\$226,100</b>
Total Sq. Ft. <b>802</b>	Neighborhood: <b>Kapahulu</b>	Total: <b>\$414,600</b>
Maint./Assoc. <b>\$819 / \$0</b>	<a href="#">Flood Zone</a> : <b>Zone X - Tool</b>	Stories / CPR: <b>4-7 / No</b>
Parking: <b>Assigned, Open - 1</b>	Frontage:	
<a href="#">Zoning</a> : <b>32 - B-2 Community Business Dis</b>	View: <b>Golf Course</b>	

**Public Remarks:** Introducing this charming 2-bedroom, 1-bathroom unit at 465 Kapahulu Avenue, Unit 4H, Honolulu, HI. This cozy 802-square-foot corner unit home features an enclosed lanai that can be used as an additional living with space with serene views of the Ala Wai Golf Course. Recent upgrades include a replacement of the electrical panel, kitchen countertops and sink. Secured building with a clean, welcoming lobby area! Front door is tucked away in the corner of the building, protected from the elements. Community laundry on each floor and is adjacent to our unit. Conveniently located near Rainbow's Drive Inn, the Honolulu Zoo, and the famous Waikiki Beach, it also offers easy bus access. Additionally, second bedroom has been opened to extend the living room area but you can convert back to original bedroom, if needed. Don't miss out on this perfect opportunity to embrace the vibrant Kapahulu lifestyle—schedule a viewing today! **Sale Conditions:** None **Schools:** , , \* [Request Showing](#), [Photos](#), [History](#), [Maps](#), [Deed](#), [Watch List](#), [Tax Info](#)



Address	Price	Bd & Bth	Living / Avg.	Land   Avg.	Lanai	Occ.	FL	DOM
<a href="#">465 Kapahulu Avenue 4H</a>	<b>\$423,000</b>	2 & 1/0	700   \$604	0   \$inf	102	33%	4	61

Address	Tax   Maint.   Ass.	Assessed Land	Assessed Building	Assessed Total	Ratio	Year & Remodeled
<a href="#">465 Kapahulu Avenue 4H</a>	\$80   \$819   \$0	\$226,100	\$188,500	\$414,600	102%	1967 & NA

[465 Kapahulu Avenue 4H](#) - MLS#: [202404400](#) - Original price was \$440,000 - Introducing this charming 2-bedroom, 1-bathroom unit at 465 Kapahulu Avenue, Unit 4H, Honolulu, HI. This cozy 802-square-foot corner unit home features an enclosed lanai that can be used as an additional living with space with serene views of the Ala Wai Golf Course. Recent upgrades include a replacement of the electrical panel, kitchen countertops and sink. Secured building with a clean, welcoming lobby area! Front door is tucked away in the corner of the building, protected from the elements. Community laundry on each floor and is adjacent to our unit. Conveniently located near Rainbow's Drive Inn, the Honolulu Zoo, and the famous Waikiki Beach, it also offers easy bus access. Additionally, second bedroom has been opened to extend the living room area but you can convert back to original bedroom, if needed. Don't miss out on this perfect opportunity to embrace the vibrant Kapahulu lifestyle—schedule a viewing today! **Region:** Diamond Head **Neighborhood:** Kapahulu **Condition:** Above Average **Parking:** Assigned, Open - 1 **Total Parking:** 1 **View:** Golf Course **Frontage:** **Pool:** **Zoning:** 32 - B-2 Community Business Dis **Sale Conditions:** None **Schools:** , , \* [Request Showing](#), [Photos](#), [History](#), [Maps](#), [Deed](#), [Watch List](#), [Tax Info](#)

DOM = Days on Market, Occ. = Occupancy, FL = Floor Number