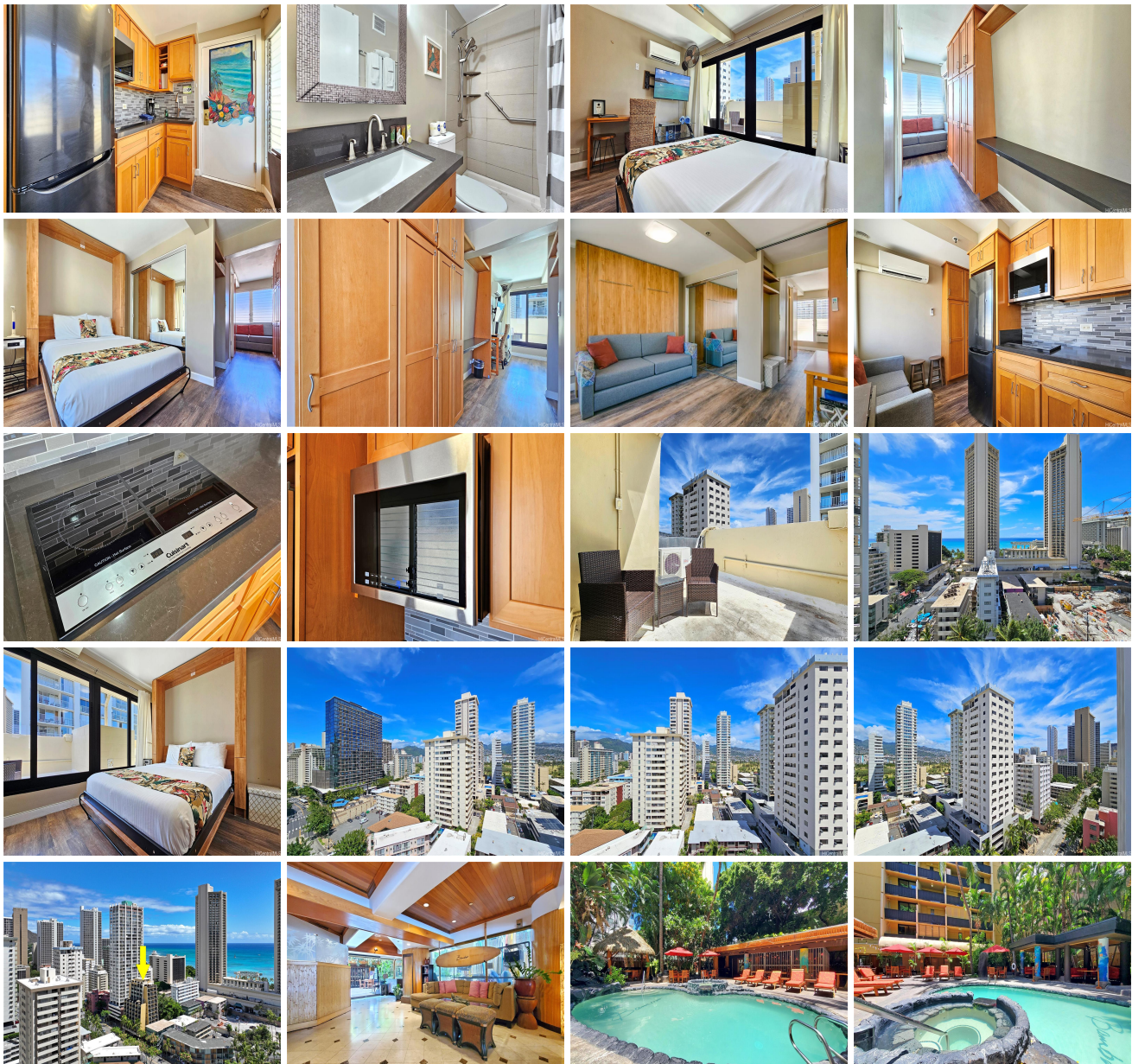


**Bamboo 2425 Kuhio Avenue Unit 1401, Honolulu 96815 \* Bamboo \* \$399,000 \* Originally \$450,000**

Beds: <b>0</b>	MLS#: <b><u>202404413</u>, FS</b>	Year Built: <b>1968</b>
Bath: <b>1/0</b>	Status: <b>Active</b>	Remodeled: <b>2018</b>
Living Sq. Ft.: <b>306</b>	List Date & DOM: <b>03-04-2024 &amp; 67</b>	Total Parking: <b>0</b>
Land Sq. Ft.: <b>0</b>	Condition: <b>Average</b>	<a href="#">Assessed Value</a>
Lanai Sq. Ft.: <b>0</b>	Frontage: <b>Other</b>	Building: <b>\$267,800</b>
Sq. Ft. Other: <b>0</b>	Tax/Year: <b>\$452/2024</b>	Land: <b>\$105,900</b>
Total Sq. Ft. <b>306</b>	Neighborhood: <b>Waikiki</b>	Total: <b>\$373,700</b>
Maint./Assoc. <b>\$849 / \$0</b>	<a href="#">Flood Zone</a> : <b>Zone AE - Tool</b>	Stories / CPR: <b>One / No</b>
Parking: <b>None, Street</b>	Frontage: <b>Other</b>	
<a href="#">Zoning</a> : <b>X6 - Resort Mixed Use Precinct</b>	View: <b>City</b>	

**Public Remarks:** This comfortable queen size Murphy Bed studio suite is complete with a modern full kitchen. Staying comfortable and secluded won't be a problem with this unit - After taking the elevator to the top floor, you walk up a flight of stairs to this rooftop suite. Enjoy the wall mounted HD TV for the few times you're not out enjoying everything Waikiki has to offer. The beach is just one block away, along with shops and restaurants. The Bamboo Waikiki is often referred to as an oasis in the heart of Waikiki. If you're looking for a relaxing day at the Bamboo, you love lounging on a cabana in the outdoor sanctuary. Cool off in the Saltwater Pool with calming waterfall, or take a dip in the hot tub, surrounded by towering palms and lush tropical plants. Have a delicious dinner at the on-site eatery or cook up your favorite foods on the barbecue grill with food purchased from the nearby grocery store. Turnkey and fully furnished - call your preferred realtor today to show between vacation rental guests. One of a kind "rooftop" legally permitted Condotel Vacation Rental. Must climb approximately 20 stairs to access this apartment. **Sale Conditions:** None **Schools:** , , \* [Request Showing](#), [Photos](#), [History](#), [Maps](#), [Deed](#), [Watch List](#), [Tax Info](#)





Address	Price	Bd & Bth	Living / Avg.	Land   Avg.	Lanai	Occ.	FL	DOM
<a href="#">2425 Kuhio Avenue 1401</a>	<b>\$399,000</b>	0 & 1/0	306   \$1,304	0   \$inf	0	1%	14	67

Address	Tax   Maint.   Ass.	Assessed Land	Assessed Building	Assessed Total	Ratio	Year & Remodeled
<a href="#">2425 Kuhio Avenue 1401</a>	\$452   \$849   \$0	\$105,900	\$267,800	\$373,700	107%	1968 & 2018

[2425 Kuhio Avenue 1401](#) - MLS#: [202404413](#) - Original price was \$450,000 - This comfortable queen size Murphy Bed studio suite is complete with a modern full kitchen. Staying comfortable and secluded won't be a problem with this unit - After taking the elevator to the top floor, you walk up a flight of stairs to this rooftop suite. Enjoy the wall mounted HD TV for the few times you're not out enjoying everything Waikiki has to offer. The beach is just one block away, along with shops and restaurants. The Bamboo Waikiki is often referred to as an oasis in the heart of Waikiki. If you're looking for a relaxing day at the Bamboo, you love lounging on a cabana in the outdoor sanctuary. Cool off in the Saltwater Pool with calming waterfall, or take a dip in the hot tub, surrounded by towering palms and lush tropical plants. Have a delicious dinner at the on-site eatery or cook up your favorite foods on the barbecue grill with food purchased from the nearby grocery store. Turnkey and fully furnished - call your preferred realtor today to show between vacation rental guests. One of a kind "rooftop" legally permitted Condotel Vacation Rental. Must climb approximately 20 stairs to access this apartment. **Region:** Metro **Neighborhood:** Waikiki **Condition:** Average **Parking:** None, Street **Total Parking:** 0 **View:** City **Frontage:** Other **Pool:** **Zoning:** X6 - Resort Mixed Use Precinct **Sale Conditions:** None **Schools:** , , \* [Request Showing](#), [Photos](#), [History](#), [Maps](#), [Deed](#), [Watch List](#), [Tax Info](#)

DOM = Days on Market, Occ. = Occupancy, FL = Floor Number