

Sky Ala Moana West 1388 Kapiolani Boulevard Unit 2810, Honolulu 96814 * Sky Ala Moana

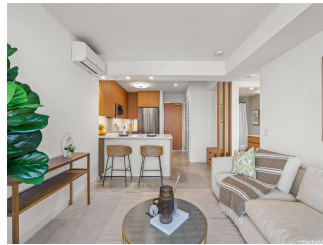
West * \$795,000

Beds: 1	MLS#: 202404462, FS	Year Built: 2023
Bath: 1/0	Status: Active	Remodeled:
Living Sq. Ft.: 519	List Date & DOM: 03-01-2024 & 68	Total Parking: 1
Land Sq. Ft.: 0	Condition: Excellent	Assessed Value
Lanai Sq. Ft.: 100	Frontage:	Building: \$579,200
Sq. Ft. Other: 0	Tax/Year: \$62/2024	Land: \$35,600
Total Sq. Ft. 619	Neighborhood: Holiday Mart	Total: \$614,800
Maint./Assoc. \$687 / \$0	Flood Zone : Zone X - Tool	Stories / CPR: 21+ / No
Parking: Assigned, Covered - 1, Secured Entry	Frontage:	

[Zoning](#): **33 - BMX-3 Community Business M**

View: **City, Mountain**

Public Remarks: Welcome to Honolulu's newest condo! Fantastic location, right across from Ala Moana Shopping Center and minutes from the beach and Waikiki! Enjoy expansive panoramic city & mountain views from your large 100 sq ft lanai! Unit has an open floorplan with a spacious kitchen. Quality features including sophisticated Bosch™ appliances, Hansgrohe fixtures, luxury Silestone quartz countertops and American-Made cabinetry throughout. Beautiful upgraded custom built woodwork elements in the unit! Must see to appreciate!! Enjoy resort-like amenities featuring a pool, whirlpool spa, lap pool, BBQ cabanas, dog park, fitness center, playground, party rooms, spa with dry and steam sauna and so much more! **Sale Conditions:** None **Schools:** , , * [Request Showing](#), [Photos](#), [History](#), [Maps](#), [Deed](#), [Watch List](#), [Tax Info](#)





Address	Price	Bd & Bth	Living / Avg.	Land Avg.	Lanai	Occ.	FL	DOM
1388 Kapiolani Boulevard 2810	\$795,000	1 & 1/0	519 \$1,532	0 \$inf	100	0%	28	68

Address	Tax Maint. Ass.	Assessed Land	Assessed Building	Assessed Total	Ratio	Year & Remodeled
1388 Kapiolani Boulevard 2810	\$62 \$687 \$0	\$35,600	\$579,200	\$614,800	129%	2023 & NA

1388 Kapiolani Boulevard 2810 - MLS#: 202404462 - Welcome to Honolulu's newest condo! Fantastic location, right across from Ala Moana Shopping Center and minutes from the beach and Waikiki! Enjoy expansive panoramic city & mountain views from your large 100 sq ft lanai! Unit has an open floorplan with a spacious kitchen. Quality features including sophisticated Bosch™ appliances, Hansgrohe fixtures, luxury Silestone quartz countertops and American-Made cabinetry throughout. Beautiful upgraded custom built woodwork elements in the unit! Must see to appreciate!! Enjoy resort-like amenities featuring a pool, whirlpool spa, lap pool, BBQ cabanas, dog park, fitness center, playground, party rooms, spa with dry and steam sauna and so much more! Region: Metro Neighborhood: Holiday Mart Condition: Excellent Parking: Assigned, Covered - 1, Secured Entry Total Parking: 1 View: City, Mountain Frontage: Pool Zoning: 33 - BMX-3 Community Business M Sale Conditions: None Schools: , , * Request Showing , Photos , History , Maps , Deed , Watch List , Tax Info						
---	--	--	--	--	--	--

DOM = Days on Market, Occ. = Occupancy, FL = Floor Number