

The Watermark 1551 Ala Wai Boulevard Unit 3503, Honolulu 96815 * The Watermark *

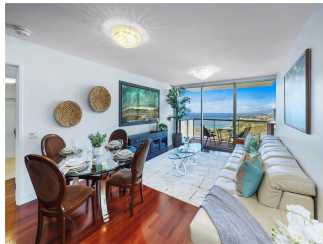
\$1,390,000 * Originally \$1,500,000

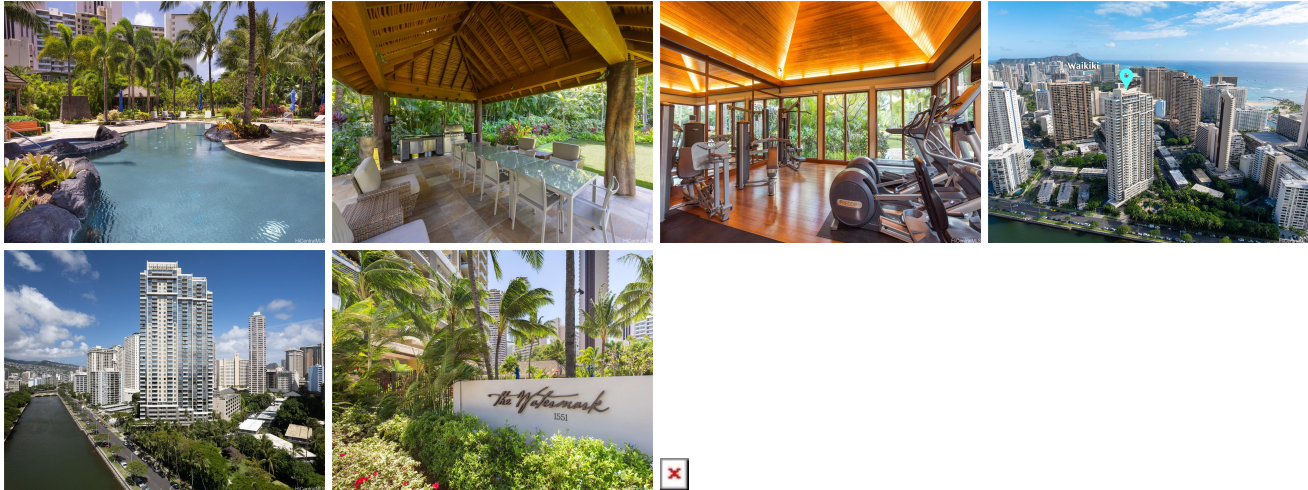
| | | |
|--|--|--------------------------------|
| Beds: 2 | MLS#: 202404480, FS | Year Built: 2008 |
| Bath: 2/0 | Status: Active | Remodeled: |
| Living Sq. Ft.: 1,113 | List Date & DOM: 03-07-2024 & 68 | Total Parking: 2 |
| Land Sq. Ft.: 0 | Condition: Above Average | Assessed Value |
| Lanai Sq. Ft.: 76 | Frontage: | Building: \$1,401,100 |
| Sq. Ft. Other: 0 | Tax/Year: \$749/2024 | Land: \$223,200 |
| Total Sq. Ft. 1,189 | Neighborhood: Waikiki | Total: \$1,624,300 |
| Maint./Assoc. \$1,624 / \$0 | Flood Zone : Zone AE - Tool | Stories / CPR: 21+ / No |
| Parking: Assigned, Covered - 2, Compact, Guest, Secured Entry, Street | Frontage: | |

[Zoning](#): **X2 - Apartment Precinct**

City, Coastline, Garden,
View: **Marina/Canal, Mountain, Ocean, Sunset**

Public Remarks: Panoramic Paradise.... Your ideal home in the sky awaits you with mesmerizing views throughout this preferred high floor 2-bedroom, 2-bath unit located in a highly desirable landmark building known as The Watermark. Enjoy a fabulous open concept floor plan w/ adjoining open-air covered lanai overlooking incredible ocean & coastline panoramic seascapes by day and awe-inspiring sunsets followed by Honolulu's sparkling cityscape each evening. Light & bright interior spaces paired w/ rich-hued wood floors create a perfect blend of warmth & sophistication. The chef will love the view from the professional kitchen featuring stainless appliances & granite countertops. A cozy Primary Bedroom Suite also will spellbinding views, offers a walk-in closet & adjacent spa like bath w/ dual vanities, soaking tub & walk in shower. A 2nd BD and bath + washer/dryer complete the space. Relish in 4-acres of resort amenities including a heated tropical lagoon pool/spa, sauna, 24-hr fitness center, BBQ pavilion, on site 24-hour security & more! Wonderful location offers easy access to nearby restaurants, entertainment options + fabulous shopping & the nearby sandy shores of Ala Moana Beach Park. **Sale Conditions:** None
Schools: [Jefferson](#), [Washington](#), [Kaimuki](#) * [Request Showing](#), [Photos](#), [History](#), [Maps](#), [Deed](#), [Watch List](#), [Tax Info](#)





| Address | Price | Bd & Bth | Living / Avg. | Land Avg. | Lanai | Occ. | FL | DOM |
|---|--------------------|----------|-----------------|-------------|-------|------|----|-----|
| 1551 Ala Wai Boulevard 3503 | \$1,390,000 | 2 & 2/0 | 1,113 \$1,249 | 0 \$inf | 76 | 66% | 35 | 68 |

| Address | Tax Maint. Ass. | Assessed Land | Assessed Building | Assessed Total | Ratio | Year & Remodeled |
|---|-----------------------|---------------|-------------------|----------------|-------|------------------|
| 1551 Ala Wai Boulevard 3503 | \$749 \$1,624 \$0 | \$223,200 | \$1,401,100 | \$1,624,300 | 86% | 2008 & NA |

[1551 Ala Wai Boulevard 3503](#) - MLS#: [202404480](#) - Original price was \$1,500,000 - Panoramic Paradise.... Your ideal home in the sky awaits you with mesmerizing views throughout this preferred high floor 2-bedroom, 2-bath unit located in a highly desirable landmark building known as The Watermark. Enjoy a fabulous open concept floor plan w/ adjoining open-air covered lanai overlooking incredible ocean & coastline panoramic seascapes by day and awe-inspiring sunsets followed by Honolulu's sparkling cityscape each evening. Light & bright interior spaces paired w/ rich-hued wood floors create a perfect blend of warmth & sophistication. The chef will love the view from the professional kitchen featuring stainless appliances & granite countertops. A cozy Primary Bedroom Suite also will spellbinding views, offers a walk-in closet & adjacent spa like bath w/ dual vanities, soaking tub & walk in shower. A 2nd BD and bath + washer/dryer complete the space. Relish in 4-acres of resort amenities including a heated tropical lagoon pool/spa, sauna, 24-hr fitness center, BBQ pavilion, on site 24-hour security & more! Wonderful location offers easy access to nearby restaurants, entertainment options + fabulous shopping & the nearby sandy shores of Ala Moana Beach Park. **Region:** Metro **Neighborhood:** Waikiki **Condition:** Above Average **Parking:** Assigned, Covered - 2, Compact, Guest, Secured Entry, Street **Total Parking:** 2 **View:** City, Coastline, Garden, Marina/Canal, Mountain, Ocean, Sunset **Frontage:** **Pool:** **Zoning:** X2 - Apartment Precinct **Sale Conditions:** None **Schools:** [Jefferson](#), [Washington](#), [Kaimuki](#) * [Request Showing](#), [Photos](#), [History](#), [Maps](#), [Deed](#), [Watch List](#), [Tax Info](#)

DOM = Days on Market, Occ. = Occupancy, FL = Floor Number