

The Watermark 1551 Ala Wai Boulevard Unit 3503, Honolulu 96815 * The Watermark *

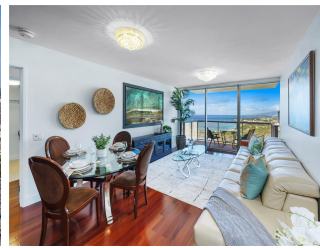
\$1,390,000 * Originally \$1,500,000

Beds: 2	MLS#: 202404480, FS	Year Built: 2008
Bath: 2/0	Status: Active	Remodeled:
Living Sq. Ft.: 1,113	List Date & DOM: 03-07-2024 & 69	Total Parking: 2
Land Sq. Ft.: 0	Condition: Above Average	Assessed Value
Lanai Sq. Ft.: 76	Frontage:	Building: \$1,401,100
Sq. Ft. Other: 0	Tax/Year: \$749/2024	Land: \$223,200
Total Sq. Ft. 1,189	Neighborhood: Waikiki	Total: \$1,624,300
Maint./Assoc. \$1,624 / \$0	Flood Zone : Zone AE - Tool	Stories / CPR: 21+ / No
Parking: Assigned, Covered - 2, Compact, Guest, Secured Entry, Street	Frontage:	

[Zoning](#): **X2 - Apartment Precinct**

City, Coastline, Garden,
View: **Marina/Canal, Mountain, Ocean, Sunset**

Public Remarks: Panoramic Paradise.... Your ideal home in the sky awaits you with mesmerizing views throughout this preferred high floor 2-bedroom, 2-bath unit located in a highly desirable landmark building known as The Watermark. Enjoy a fabulous open concept floor plan w/ adjoining open-air covered lanai overlooking incredible ocean & coastline panoramic seascapes by day and awe-inspiring sunsets followed by Honolulu's sparkling cityscape each evening. Light & bright interior spaces paired w/ rich-hued wood floors create a perfect blend of warmth & sophistication. The chef will love the view from the professional kitchen featuring stainless appliances & granite countertops. A cozy Primary Bedroom Suite also will spellbinding views, offers a walk-in closet & adjacent spa like bath w/ dual vanities, soaking tub & walk in shower. A 2nd BD and bath + washer/dryer complete the space. Relish in 4-acres of resort amenities including a heated tropical lagoon pool/spa, sauna, 24-hr fitness center, BBQ pavilion, on site 24-hour security & more! Wonderful location offers easy access to nearby restaurants, entertainment options + fabulous shopping & the nearby sandy shores of Ala Moana Beach Park. **Sale Conditions:** None
Schools: [Jefferson](#), [Washington](#), [Kaimuki](#) * [Request Showing](#), [Photos](#), [History](#), [Maps](#), [Deed](#), [Watch List](#), [Tax Info](#)



Address	Price	Bd & Bth	Living / Avg.	Land Avg.	Lanai	Occ.	FL	DOM
1551 Ala Wai Boulevard 3503	\$1,390,000	2 & 2/0	1,113 \$1,249	0 \$inf	76	66%	35	69

Address	Tax Maint. Ass.	Assessed Land	Assessed Building	Assessed Total	Ratio	Year & Remodeled
1551 Ala Wai Boulevard 3503	\$749 \$1,624 \$0	\$223,200	\$1,401,100	\$1,624,300	86%	2008 & NA

[1551 Ala Wai Boulevard 3503](#) - MLS#: [202404480](#) - Original price was \$1,500,000 - Panoramic Paradise.... Your ideal home in the sky awaits you with mesmerizing views throughout this preferred high floor 2-bedroom, 2-bath unit located in a highly desirable landmark building known as The Watermark. Enjoy a fabulous open concept floor plan w/ adjoining open-air covered lanai overlooking incredible ocean & coastline panoramic seascapes by day and awe-inspiring sunsets followed by Honolulu's sparkling cityscape each evening. Light & bright interior spaces paired w/ rich-hued wood floors create a perfect blend of warmth & sophistication. The chef will love the view from the professional kitchen featuring stainless appliances & granite countertops. A cozy Primary Bedroom Suite also will spellbinding views, offers a walk-in closet & adjacent spa like bath w/ dual vanities, soaking tub & walk in shower. A 2nd BD and bath + washer/dryer complete the space. Relish in 4-acres of resort amenities including a heated tropical lagoon pool/spa, sauna, 24-hr fitness center, BBQ pavilion, on site 24-hour security & more! Wonderful location offers easy access to nearby restaurants, entertainment options + fabulous shopping & the nearby sandy shores of Ala Moana Beach Park. **Region:** Metro **Neighborhood:** Waikiki **Condition:** Above Average **Parking:** Assigned, Covered - 2, Compact, Guest, Secured Entry, Street **Total Parking:** 2 **View:** City, Coastline, Garden, Marina/Canal, Mountain, Ocean, Sunset **Frontage:** Pool: **Zoning:** X2 - Apartment Precinct **Sale Conditions:** None **Schools:** [Jefferson](#), [Washington](#), [Kaimuki](#) * [Request Showing](#), [Photos](#), [History](#), [Maps](#), [Deed](#), [Watch List](#), [Tax Info](#)

DOM = Days on Market, Occ. = Occupancy, FL = Floor Number