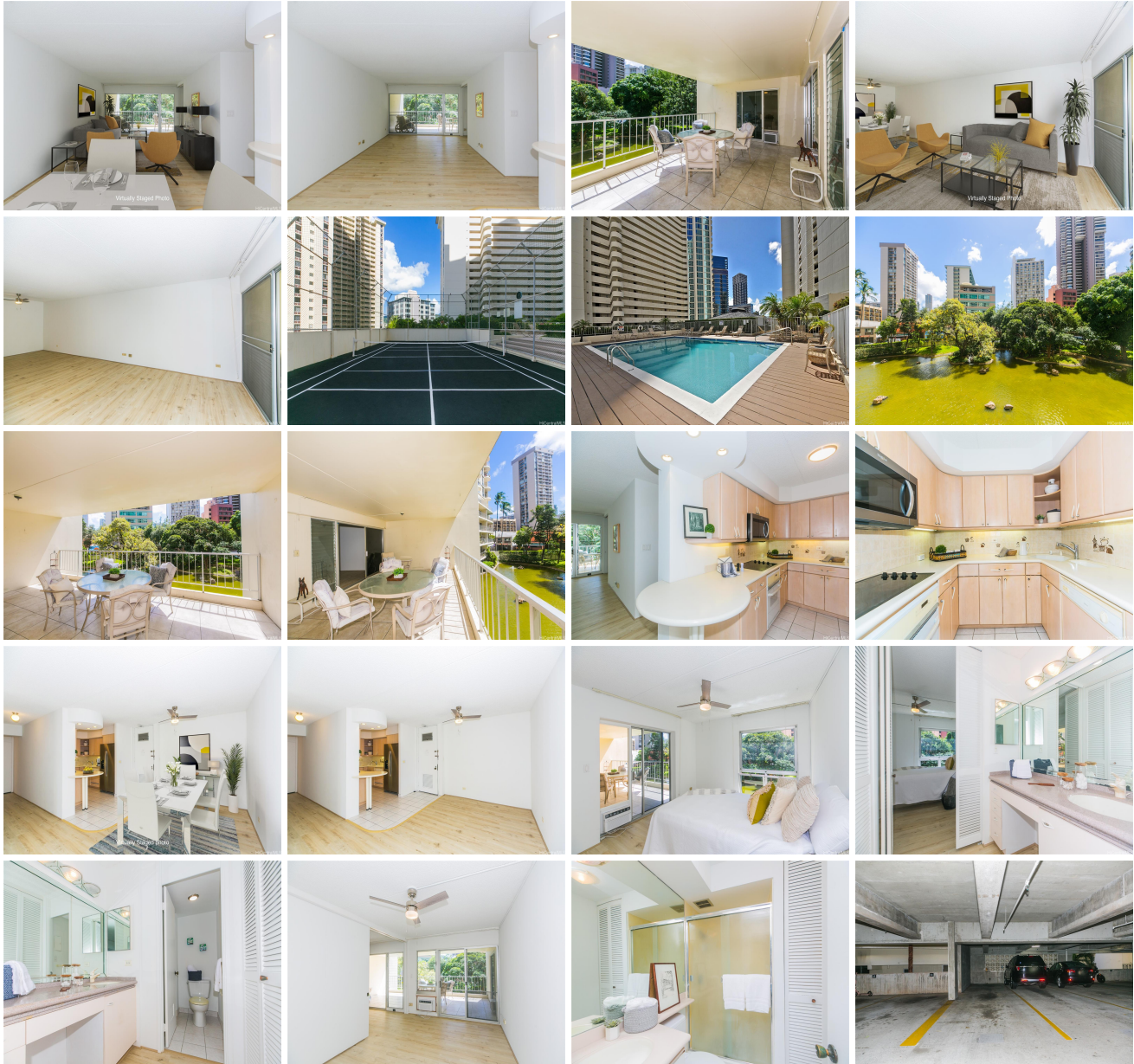


Waipuna 469 Ena Road Unit 305, Honolulu 96815 * Waipuna * \$850,000

Beds: 2	MLS#: <u>202404615</u>, FS	Year Built: 1971
Bath: 2/0	Status: Active	Remodeled:
Living Sq. Ft.: 1,119	List Date & DOM: 03-04-2024 & 65	Total Parking: 2
Land Sq. Ft.: 113,169	Condition: Excellent, Above Average	Assessed Value
Lanai Sq. Ft.: 312	Frontage:	Building: \$571,000
Sq. Ft. Other: 0	Tax/Year: \$197/2023	Land: \$102,700
Total Sq. Ft. 1,431	Neighborhood: Waikiki	Total: \$673,700
Maint./Assoc. \$978 / \$0	Flood Zone : Zone AE - Tool	Stories / CPR: 21+ / No
Parking: Covered - 2, Tandem	Frontage:	
Zoning : X2 - Apartment Precinct	View: Garden, Other	

Public Remarks: Wow! Entertain on your huge lanai & great room overlooking tranquil water, flowing trees and lush garden! Steps from Waikiki beach, Ala Moana Shopping Center and more! Who can resist a private view of a "Central Park" setting in Waikiki? This very spacious 2 bedroom, 2 bath condominium places you in a setting that is rarely available and is just one block from the beach! Interior living space including the lanai is 1440 square feet. When you walk into this unit, it feels even larger and grander like no other on the market. It just flows easily. New high-end flooring, fresh paint has just been added new air conditioners, new fans and new microwave. The amenities offered to you at the Waipuna are many, including a gorgeous recently remodeled pool, a sauna, tennis/pickle ball, exercise room, dog walk, a meeting/party room, shuffleboard, a golf practice area, playground, new barbecues, car wash area, storage, library, 24 hour security. Building manager or maintenance on call 24/7. In addition to your two covered parking spaces on the same level as the unit, there are more than twenty spaces for your guests. Very Pet Friendly! Click on the "film reel" icon for additional photos! **Sale Conditions:** None

Schools: [Jefferson](#), [Washington](#), [Kaimuki](#) * [Request Showing](#), [Photos](#), [History](#), [Maps](#), [Deed](#), [Watch List](#), [Tax Info](#)





Address	Price	Bd & Bth	Living / Avg.	Land Avg.	Lanai	Occ.	FL	DOM
469 Ena Road 305	\$850,000	2 & 2/0	1,119 \$760	113,169 \$8	312	50%	3	65

Address	Tax Maint. Ass.	Assessed Land	Assessed Building	Assessed Total	Ratio	Year & Remodeled
469 Ena Road 305	\$197 \$978 \$0	\$102,700	\$571,000	\$673,700	126%	1971 & NA

[469 Ena Road 305](#) - MLS#: [202404615](#) - Wow! Entertain on your huge lanai & great room overlooking tranquil water, flowing trees and lush garden! Steps from Waikiki beach, Ala Moana Shopping Center and more! Who can resist a private view of a "Central Park" setting in Waikiki? This very spacious 2 bedroom, 2 bath condominium places you in a setting that is rarely available and is just one block from the beach! Interior living space including the lanai is 1440 square feet. When you walk into this unit, it feels even larger and grander like no other on the market. It just flows easily. New high-end flooring, fresh paint has just been added new air conditioners, new fans and new microwave. The amenities offered to you at the Waipuna are many, including a gorgeous recently remodeled pool, a sauna, tennis/pickle ball, exercise room, dog walk, a meeting/party room, shuffleboard, a golf practice area, playground, new barbecues, car wash area, storage, library, 24 hour security. Building manager or maintenance on call 24/7. In addition to your two covered parking spaces on the same level as the unit, there are more than twenty spaces for your guests. Very Pet Friendly! Click on the "film reel" icon for additional photos! **Region:** Metro **Neighborhood:** Waikiki **Condition:** Excellent, Above Average **Parking:** Covered - 2, Tandem **Total Parking:** 2 **View:** Garden, Other **Frontage:** **Pool:** **Zoning:** X2 - Apartment Precinct **Sale Conditions:** None **Schools:** [Jefferson](#), [Washington](#), [Kaimuki](#) * [Request Showing](#), [Photos](#), [History](#), [Maps](#), [Deed](#), [Watch List](#), [Tax Info](#)

DOM = Days on Market, Occ. = Occupancy, FL = Floor Number