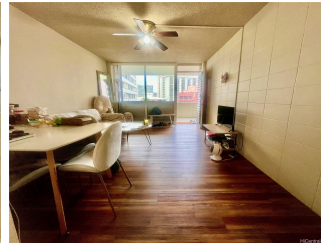


Kalia 425 Ena Road Unit 902B, Honolulu 96815 * Kalia * \$119,888

Beds: 1	MLS#: 202404709 , LH	Year Built: 1958
Bath: 1/0	Status: Active	Remodeled:
Living Sq. Ft.: 500	List Date & DOM: 03-18-2024 & 54	Total Parking: 0
Land Sq. Ft.: 0	Condition: Above Average	Assessed Value
Lanai Sq. Ft.: 88	Frontage:	Building: \$206,000
Sq. Ft. Other: 0	Tax/Year: \$87/2023	Land: \$96,500
Total Sq. Ft. 588	Neighborhood: Waikiki	Total: \$302,500
Maint./Assoc. \$673 / \$0	Flood Zone : Zone AE - Tool	Stories / CPR: 8-14 / No
Parking: None	Frontage:	
Zoning : X2 - Apartment Precinct	View: City, Other	

Public Remarks: Welcome to 425 Ena Road #902b, your slice of paradise in the heart of Waikiki! This leasehold condo offers the perfect blend of convenience and comfort, just a short stroll away from iconic landmarks like the Hilton Hawaiian Village and Ala Moana Beach Park. Step into this one-bedroom, one-bath condominium nestled within the Kalia Inc in Building B. Inside, you'll find over 500 square feet of interior space, complemented by an enclosed lanai spanning 88 square feet, providing an extension to your living area. While the building is not pet-friendly and doesn't offer parking, it compensates with amenities galore! Enjoy peace of mind with dedicated security patrols, take a refreshing dip in the community pool, or savor outdoor grilling sessions at the barbecue area. 24 years left on the lease fee (2048 with fixed increases), this condo presents an affordable option for real estate investors, first-time home buyers, or those seeking a secondary home in paradise. Don't miss out on this opportunity to own a piece of Waikiki's charm! Schedule a viewing today and start living the island life you've always dreamed of. Condo is currently tenant occupied/lease expires in August 31, 2024. **Sale Conditions:** None **Schools:** , * [Request Showing](#), [Photos](#), [History](#), [Maps](#), [Deed](#), [Watch List](#), [Tax Info](#)



Address	Price	Bd & Bth	Living / Avg.	Land Avg.	Lanai	Occ.	FL	DOM
425 Ena Road 902B	\$119,888 LH	1 & 1/0	500 \$240	0 \$inf	88	40%	9	54

Address	Tax Maint. Ass.	Assessed Land	Assessed Building	Assessed Total	Ratio	Year & Remodeled
425 Ena Road 902B	\$87 \$673 \$0	\$96,500	\$206,000	\$302,500	40%	1958 & NA

[425 Ena Road 902B](#) - MLS#: [202404709](#) - Welcome to 425 Ena Road #902b, your slice of paradise in the heart of Waikiki! This leasehold condo offers the perfect blend of convenience and comfort, just a short stroll away from iconic landmarks like the Hilton Hawaiian Village and Ala Moana Beach Park. Step into this one-bedroom, one-bath condominium nestled within the Kalia Inc in Building B. Inside, you'll find over 500 square feet of interior space, complemented by an enclosed lanai spanning 88 square feet, providing an extension to your living area. While the building is not pet-friendly and doesn't offer parking, it compensates with amenities galore! Enjoy peace of mind with dedicated security patrols, take a refreshing dip in the community pool, or savor outdoor grilling sessions at the barbecue area. 24 years left on the lease fee (2048 with fixed increases), this condo presents an affordable option for real estate investors, first-time home buyers, or those seeking a secondary home in paradise. Don't miss out on this opportunity to own a piece of Waikiki's charm! Schedule a viewing today and start living the island life you've always dreamed of. Condo is currently tenant occupied/lease expires in August 31, 2024. **Region:** Metro **Neighborhood:** Waikiki **Condition:** Above Average **Parking:** None **Total Parking:** 0 **View:** City, Other **Frontage:** Pool: **Zoning:** X2 - Apartment Precinct **Sale Conditions:** None **Schools:** , , * [Request Showing](#), [Photos](#), [History](#), [Maps](#), [Deed](#), [Watch List](#), [Tax Info](#)

DOM = Days on Market, Occ. = Occupancy, FL = Floor Number