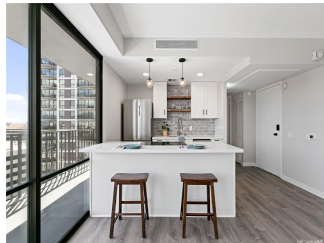


Harbor Square 225 Queen Street Unit 15D, Honolulu 96813 * Harbor Square * \$386,999

Beds: 1	MLS#: 202404712, FS	Year Built: 1971
Bath: 1/0	Status: Active Under Contract	Remodeled: 2024
Living Sq. Ft.: 469	List Date & DOM: 03-04-2024 & 32	Total Parking: 0
Land Sq. Ft.: 0	Condition: Excellent	Assessed Value
Lanai Sq. Ft.: 121	Frontage:	Building: \$296,300
Sq. Ft. Other: 0	Tax/Year: \$96/2022	Land: \$35,900
Total Sq. Ft. 590	Neighborhood: Downtown	Total: \$332,200
Maint./Assoc. \$896 / \$0	Flood Zone : Zone X - Tool	Stories / CPR: / No
Parking: None, Other	Frontage:	
Zoning : 34 - BMX-4 Central Business Mix	View: Ocean, Sunrise, Sunset	

Public Remarks: New new new! Dreamy Ocean View Condo with a Splash of Style! High-floor, hard to find location at Harbor Square in downtown Honolulu with endless views. The stunning subway tile and open shelving in the kitchen, soft-close cabinets, and workstation sink add a touch of luxury to your daily routine. Imagine sipping your morning coffee on the lanai and taking in the panoramic view. New appliances throughout and systems updated too- new plumbing fixtures, smart outlets, etc. Maintenance includes 24-hour security, basic cable TV, internet, water, sewer, and electricity. These units feature additional storage on the same floor. Conveniently located near Aloha Tower, HPU campus, Chinatown, hospitals, State Capital, and more. Secured building with resident manager and staff. Parking available in monthly rental garage, direct debit discount available. Come experience the ultimate blend of style and serenity in the heart of Honolulu. **Sale Conditions:** None **Schools:** , , * [Request Showing](#), [Photos](#), [History](#), [Maps](#), [Deed](#), [Watch List](#), [Tax Info](#)



Address	Price	Bd & Bth	Living / Avg.	Land Avg.	Lanai	Occ.	FL	DOM
225 Queen Street 15D	\$386,999	1 & 1/0	469 \$825	0 \$inf	121	53%	15	32

Address	Tax Maint. Ass.	Assessed Land	Assessed Building	Assessed Total	Ratio	Year & Remodeled
225 Queen Street 15D	\$96 \$896 \$0	\$35,900	\$296,300	\$332,200	116%	1971 & 2024

[225 Queen Street 15D](#) - MLS#: [202404712](#) - New new new! Dreamy Ocean View Condo with a Splash of Style! High-floor, hard to find location at Harbor Square in downtown Honolulu with endless views. The stunning subway tile and open shelving in the kitchen, soft-close cabinets, and workstation sink add a touch of luxury to your daily routine. Imagine sipping your morning coffee on the lanai and taking in the panoramic view. New appliances throughout and systems updated too- new plumbing fixtures, smart outlets, etc. Maintenance includes 24-hour security, basic cable TV, internet, water, sewer, and electricity. These units feature additional storage on the same floor. Conveniently located near Aloha Tower, HPU campus, Chinatown, hospitals, State Capital, and more. Secured building with resident manager and staff. Parking available in monthly rental garage, direct debit discount available. Come experience the ultimate blend of style and serenity in the heart of Honolulu. **Region:** Metro **Neighborhood:** Downtown **Condition:** Excellent **Parking:** None, Other **Total Parking:** 0 **View:** Ocean, Sunrise, Sunset **Frontage:** **Pool:** **Zoning:** 34 - BMX-4 Central Business Mix **Sale Conditions:** None **Schools:** , , * [Request Showing](#), [Photos](#), [History](#), [Maps](#), [Deed](#), [Watch List](#), [Tax Info](#)

DOM = Days on Market, Occ. = Occupancy, FL = Floor Number