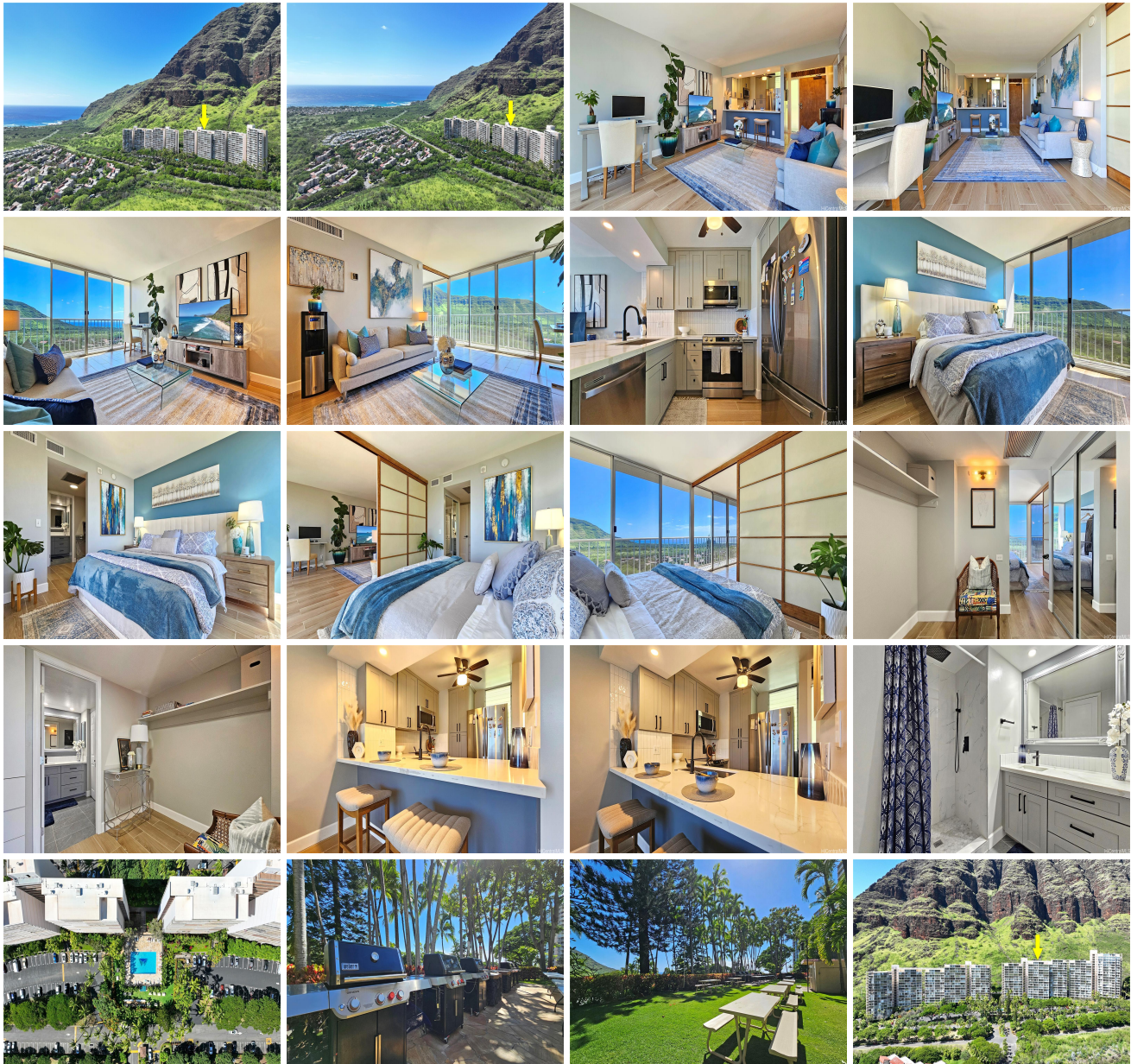


Makaha Valley Towers 84-740 Kili Drive Unit 726, Waianae 96792 * **Makaha Valley Towers**

*** \$309,988**

Beds: 1	MLS#: 202404742, FS	Year Built: 1970
Bath: 1/0	Status: Active	Remodeled: 2023
Living Sq. Ft.: 680	List Date & DOM: 03-05-2024 & 65	Total Parking: 1
Land Sq. Ft.: 612,759	Condition: Excellent	Assessed Value
Lanai Sq. Ft.: 60	Frontage: Other	Building: \$177,100
Sq. Ft. Other: 0	Tax/Year: \$25/2024	Land: \$31,600
Total Sq. Ft. 740	Neighborhood: Makaha	Total: \$208,700
Maint./Assoc. \$1,065 / \$0	Flood Zone : Zone D - Tool	Stories / CPR: 15-20 / No
Parking: Open - 1, Secured Entry, Unassigned	Frontage: Other	
Zoning : 12 - A-2 Medium Density Apartme	View: Mountain, Ocean, Sunset	

Public Remarks: Imagine yourself waking up to infinite ocean views EVERY SINGLE DAY! That is one of the most amazing highlights in this unit. At Makaha Valley Towers, you'll experience a true Hawaiian oasis tucked away in the valley surrounded by tropical, lush landscape, majestic mountains and turquoise ocean views as far as the eyes can see. Welcome home to a fully updated, **FULLY FURNISHED** condo with upgrades that you will appreciate including open concept kitchen, with stainless steel appliances, modern bathroom w/ new rainfall shower and vanity, complimented with black matte finishes. This condo is perfect to enjoy at any time throughout the day. Whether it is spending time on the lanai enjoying a nice cup of coffee/tea in the morning or glass of wine/ mai tai watching the sunset or simply stargazing in the night, you will be amazed if you call this place home. Once a year, you will be greeted with huge waterfalls from your front door that will take your breath away and, on few occasions, you may see whales from your lanai passing down at Makaha Beach Park. Escape the hustle and bustle that Waikiki & Honolulu brings and instead, make the move to Makaha by owning your piece of paradise. **Sale Conditions:** None
Schools: [Makaha](#), [Waianae](#), [Waianae](#) * [Request Showing](#), [Photos](#), [History](#), [Maps](#), [Deed](#), [Watch List](#), [Tax Info](#)





Address	Price	Bd & Bth	Living / Avg.	Land Avg.	Lanai	Occ.	FL	DOM
84-740 Kili Drive 726	\$309,988	1 & 1/0	680 \$456	612,759 \$1	60	35%	7	65

Address	Tax Maint. Ass.	Assessed Land	Assessed Building	Assessed Total	Ratio	Year & Remodeled
84-740 Kili Drive 726	\$25 \$1,065 \$0	\$31,600	\$177,100	\$208,700	149%	1970 & 2023

[84-740 Kili Drive 726](#) - MLS#: [202404742](#) - Imagine yourself waking up to infinite ocean views EVERY SINGLE DAY! That is one of the most amazing highlights in this unit. At Makaha Valley Towers, you'll experience a true Hawaiian oasis tucked away in the valley surrounded by tropical, lush landscape, majestic mountains and turquoise ocean views as far as the eyes can see. Welcome home to a fully updated, FULLY FURNISHED condo with upgrades that you will appreciate including open concept kitchen, with stainless steel appliances, modern bathroom w/ new rainfall shower and vanity, complimented with black matte finishes. This condo is perfect to enjoy at any time throughout the day. Whether it is spending time on the lanai enjoying a nice cup of coffee/tea in the morning or glass of wine/ mai tai watching the sunset or simply stargazing in the night, you will be amazed if you call this place home. Once a year, you will be greeted with huge waterfalls from your front door that will take your breath away and, on few occasions, you may see whales from your lanai passing down at Makaha Beach Park. Escape the hustle and bustle that Waikiki & Honolulu brings and instead, make the move to Makaha by owning your piece of paradise. **Region:** Leeward **Neighborhood:** Makaha **Condition:** Excellent **Parking:** Open - 1, Secured Entry, Unassigned **Total Parking:** 1 **View:** Mountain, Ocean, Sunset **Frontage:** Other **Pool:** **Zoning:** 12 - A-2 Medium Density Apartme **Sale Conditions:** None **Schools:** [Makaha](#), [Waianae](#), [Waianae](#) * [Request Showing](#), [Photos](#), [History](#), [Maps](#), [Deed](#), [Watch List](#), [Tax Info](#)

DOM = Days on Market, Occ. = Occupancy, FL = Floor Number