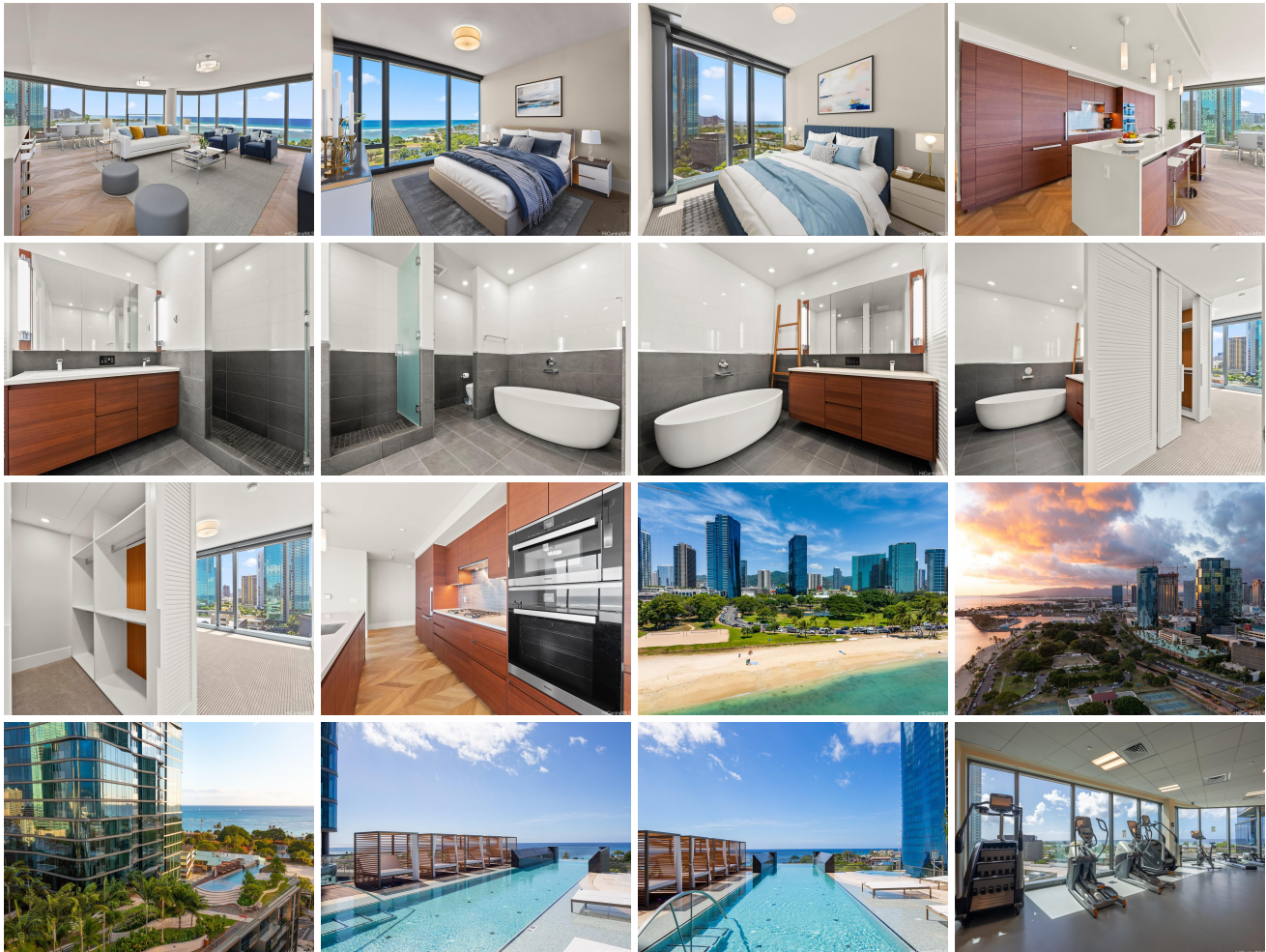


Anaha - 1108 Auahi 1108 Auahi Street Unit 1200, Honolulu 96814 * Anaha - 1108 Auahi *

\$3,310,000

Beds: 3	MLS#: <u>202404759</u>, FS	Year Built: 2017
Bath: 3/1	Status: Active Under Contract	Remodeled:
Living Sq. Ft.: 2,489	List Date & DOM: 03-05-2024 & 59	Total Parking: 2
Land Sq. Ft.: 0	Condition: Excellent	Assessed Value
Lanai Sq. Ft.: 0	Frontage: Other	Building: \$3,512,700
Sq. Ft. Other: 0	Tax/Year: \$1,031/2023	Land: \$123,300
Total Sq. Ft. 2,489	Neighborhood: Kakaako	Total: \$3,636,000
Maint./Assoc. \$3,974 / \$0	Flood Zone : Zone AE - <u>Tool</u>	Stories / CPR: 21+ / No
Parking: Assigned, Covered - 2, Garage, Guest, Secured Entry	Frontage: Other	
Zoning : Kak - Kakaako Community Development Project	View: City, Coastline, Diamond Head, Mountain, Ocean, Sunrise, Sunset	

Public Remarks: Anaha #1200 - The pinnacle of luxury urban living meets Hawaiian beach life at Ward Village 's flagship luxury building, Anaha. This expansive, open concept 3-bed, 3.5-bath floor plan delivers 180-degree wrap-around views of Diamond Head, ocean, coastline & sunset views! This unit offers a 2,489 Sq.ft living area complete with a chef's kitchen and luxurious amenities. You can enjoy the urban & beach life styles combined with easy entertainment for family and friends. Amenities include guests suites, a large fitness center, yoga room, golf simulator, sauna and steam room, tennis court, coffee lounge, billiard room, theater, amazing party rooms, chef's kitchen, bbq cabanas, and resort-like pool with spa. Anaha is in Honolulu's most desirable upscale and walkable Ward village and Ala Moana neighborhood. Ala Moana Beach park, Ala Moana Mall, Whole Foods, theaters, restaurants, shopping, entertainment are all just a few steps away. The unit comes with two side-by-side parking stalls close to the entry. Anaha #1200 is one of the best priced units in Ward Village - its size, top of the line finishes, amenities, stunning views & prime location are a must see! **Sale Conditions:** None **Schools:** , , * [Request Showing](#), [Photos](#), [History](#), [Maps](#), [Deed](#), [Watch List](#), [Tax Info](#)





Address	Price	Bd & Bth	Living / Avg.	Land Avg.	Lanai	Occ.	FL	DOM
1108 Auahi Street 1200	\$3,310,000	3 & 3/1	2,489 \$1,330	0 \$inf	0	65%	12	59

Address	Tax Maint. Ass.	Assessed Land	Assessed Building	Assessed Total	Ratio	Year & Remodeled
1108 Auahi Street 1200	\$1,031 \$3,974 \$0	\$123,300	\$3,512,700	\$3,636,000	91%	2017 & NA

[1108 Auahi Street 1200](#) - MLS#: [202404759](#) - Anaha #1200 - The pinnacle of luxury urban living meets Hawaiian beach life at Ward Village 's flagship luxury building, Anaha. This expansive, open concept 3-bed, 3.5-bath floor plan delivers 180-degree wrap-around views of Diamond Head, ocean, coastline & sunset views! This unit offers a 2,489 Sq.ft living area complete with a chef's kitchen and luxurious amenities. You can enjoy the urban & beach life styles combined with easy entertainment for family and friends. Amenities include guests suites, a large fitness center, yoga room, golf simulator, sauna and steam room, tennis court, coffee lounge, billiard room, theater, amazing party rooms, chef's kitchen, bbq cabanas, and resort-like pool with spa. Anaha is in Honolulu's most desirable upscale and walkable Ward village and Ala Moana neighborhood. Ala Moana Beach park, Ala Moana Mall, Whole Foods, theaters, restaurants, shopping, entertainment are all just a few steps away. The unit comes with two side-by-side parking stalls close to the entry. Anaha #1200 is one of the best priced units in Ward Village - its size, top of the line finishes, amenities, stunning views & prime location are a must see! **Region:** Metro **Neighborhood:** Kakaako **Condition:** Excellent **Parking:** Assigned, Covered - 2, Garage, Guest, Secured Entry **Total Parking:** 2 **View:** City, Coastline, Diamond Head, Mountain, Ocean, Sunrise, Sunset **Frontage:** Other **Pool:** **Zoning:** Kak - Kakaako Community Development Project **Sale Conditions:** None **Schools:** , , * [Request Showing](#), [Photos](#), [History](#), [Maps](#), [Deed](#), [Watch List](#), [Tax Info](#)

DOM = Days on Market, Occ. = Occupancy, FL = Floor Number