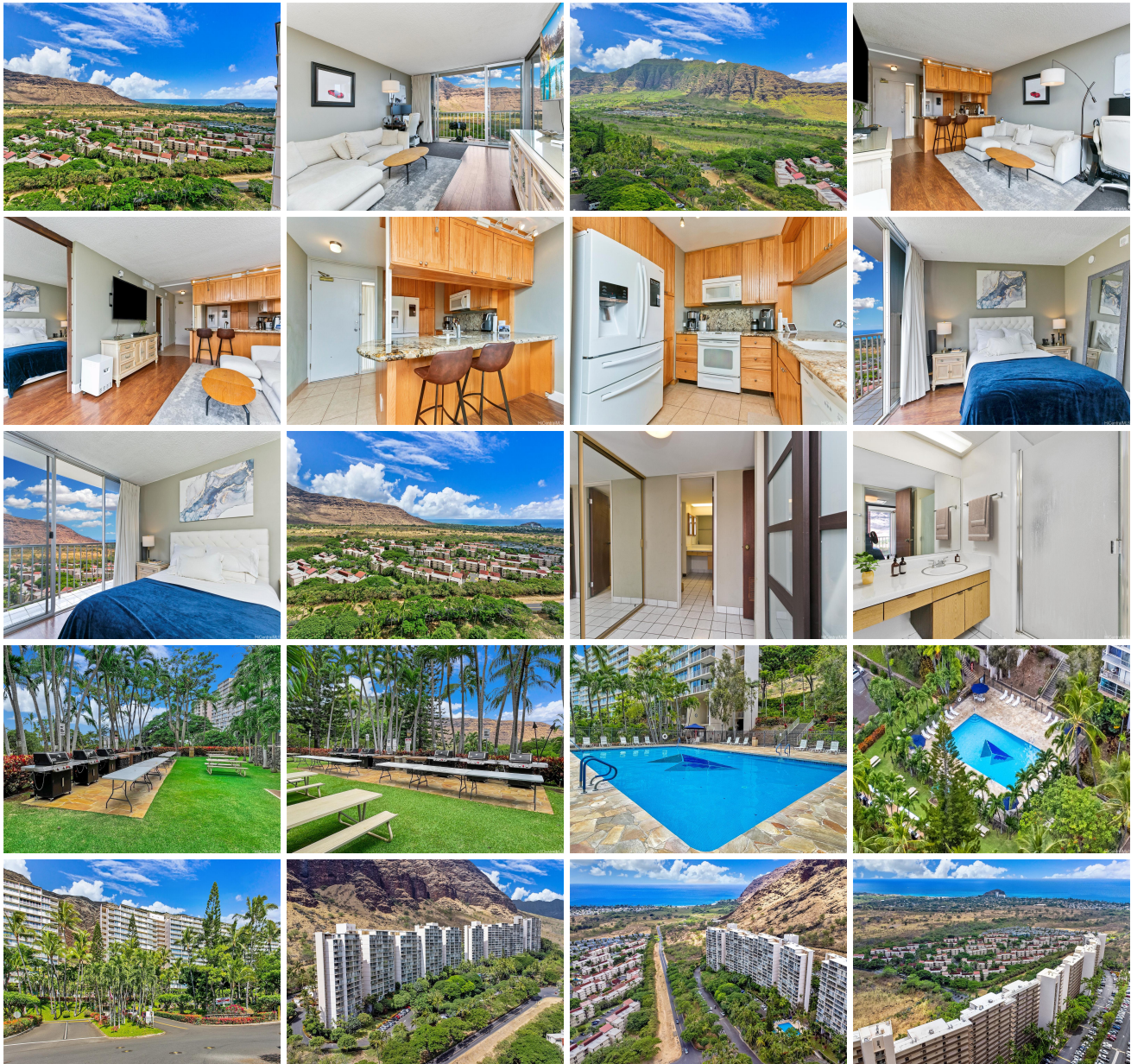


Makaha Valley Towers 84-680 Kili Drive Unit 1505, Waianae 96792 * Makaha Valley Towers

*** \$245,000 * Originally \$249,000**

Beds: 1	MLS#: <u>202404777</u>, FS	Year Built: 1970
Bath: 1/0	Status: Active Under Contract	Remodeled:
Living Sq. Ft.: 680	List Date & DOM: 03-05-2024 & 35	Total Parking: 1
Land Sq. Ft.: 0	Condition: Excellent	Assessed Value
Lanai Sq. Ft.: 60	Frontage:	Building: \$182,500
Sq. Ft. Other: 0	Tax/Year: \$61/2024	Land: \$31,600
Total Sq. Ft. 740	Neighborhood: Makaha	Total: \$214,100
Maint./Assoc. \$1,065 / \$0	Flood Zone : Zone D - Tool	Stories / CPR: 15-20 / No
Parking: Guest, Open - 1, Secured Entry	Frontage:	
Zoning : 12 - A-2 Medium Density Apartme	View: Coastline, Mountain, Ocean	

Public Remarks: Welcome home in beautiful Makaha Valley, and enjoy breathtaking panoramic ocean and mountain views from the 15th floor! This high-floor corner 1-bed 1-bath unit in resort-like Makaha Valley Towers boasts a stylish kitchen with granite countertops and ample cabinet space. Upgraded laminate flooring in the living area and bedroom and upgraded beautiful curtains with remote control. Floor-to-ceiling windows let in abundant natural light, and you can fully enjoy the sweeping views without even stepping out to your lovely lanai! #1505 is a corner unit with no neighbors on one side, and with easy access to elevators and laundry room. 1 parking, and you can rent additional parking for a low monthly fee. Very well maintained gated community w/ lush landscaping, 24/7 security, large swimming pool and BBQs. Maintenance fee includes: Central A/C, electricity, water, sewer, hot water, internet and cable. Close to world famous Makaha Beach, hiking trails and so much more natural scenery! **Sale Conditions:** None **Schools:** , , * [Request Showing](#), [Photos](#), [History](#), [Maps](#), [Deed](#), [Watch List](#), [Tax Info](#)



Address	Price	Bd & Bth	Living / Avg.	Land Avg.	Lanai	Occ.	FL	DOM
84-680 Kili Drive 1505	\$245,000	1 & 1/0	680 \$360	0 \$inf	60	32%	15	35

Address	Tax Maint. Ass.	Assessed Land	Assessed Building	Assessed Total	Ratio	Year & Remodeled
84-680 Kili Drive 1505	\$61 \$1,065 \$0	\$31,600	\$182,500	\$214,100	114%	1970 & NA

[84-680 Kili Drive 1505](#) - MLS#: [202404777](#) - Original price was \$249,000 - Welcome home in beautiful Makaha Valley, and enjoy breathtaking panoramic ocean and mountain views from the 15th floor! This high-floor corner 1-bed 1-bath unit in resort-like Makaha Valley Towers boasts a stylish kitchen with granite countertops and ample cabinet space. Upgraded laminate flooring in the living area and bedroom and upgraded beautiful curtains with remote control. Floor-to-ceiling windows let in abundant natural light, and you can fully enjoy the sweeping views without even stepping out to your lovely lanai! #1505 is a corner unit with no neighbors on one side, and with easy access to elevators and laundry room. 1 parking, and you can rent additional parking for a low monthly fee. Very well maintained gated community w/ lush landscaping, 24/7 security, large swimming pool and BBQs. Maintenance fee includes: Central A/C, electricity, water, sewer, hot water, internet and cable. Close to world famous Makaha Beach, hiking trails and so much more natural scenery! **Region:** Leeward
Neighborhood: Makaha **Condition:** Excellent **Parking:** Guest, Open - 1, Secured Entry **Total Parking:** 1 **View:** Coastline, Mountain, Ocean **Frontage:** **Pool:** **Zoning:** 12 - A-2 Medium Density Apartme **Sale Conditions:** None **Schools:** , , *
[Request Showing](#), [Photos](#), [History](#), [Maps](#), [Deed](#), [Watch List](#), [Tax Info](#)

DOM = Days on Market, Occ. = Occupancy, FL = Floor Number