

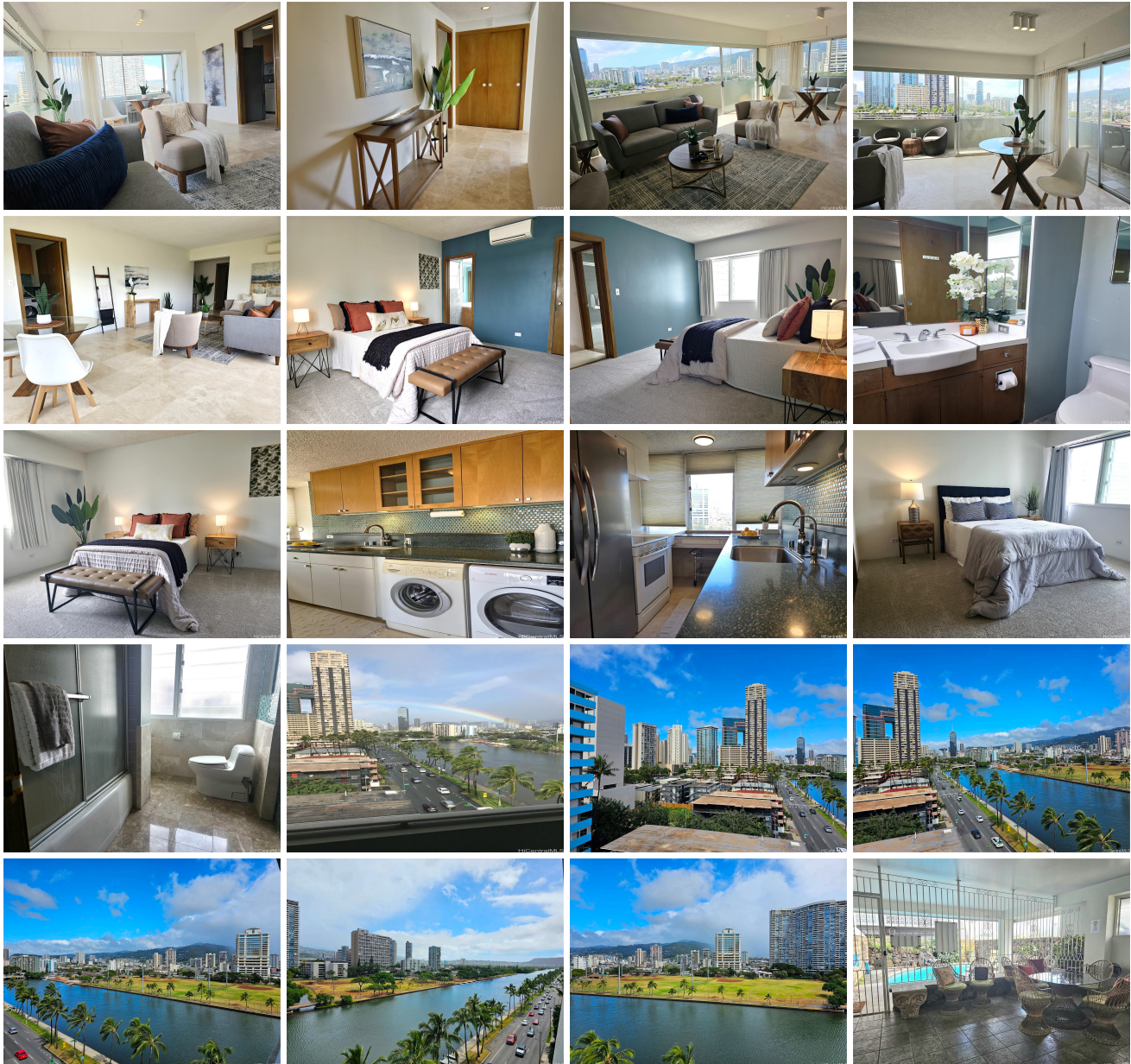
**Bel-Aire The 2015 Ala Wai Boulevard Unit 9C, Honolulu 96815 \* Bel-Aire The \* \$629,000**

Beds: <b>2</b>	MLS#: <b><u>202405914</u>, FS</b>	Year Built: <b>1961</b>
Bath: <b>1/1</b>	Status: <b>Active</b>	Remodeled:
Living Sq. Ft.: <b>1,176</b>	List Date & DOM: <b>03-08-2024 &amp; 67</b>	Total Parking: <b>1</b>
Land Sq. Ft.: <b>0</b>	Condition: <b>Above Average</b>	<a href="#">Assessed Value</a>
Lanai Sq. Ft.: <b>176</b>	Frontage: <b>Other</b>	Building: <b>\$482,000</b>
Sq. Ft. Other: <b>0</b>	Tax/Year: <b>\$214/2024</b>	Land: <b>\$160,600</b>
Total Sq. Ft. <b>1,352</b>	Neighborhood: <b>Waikiki</b>	Total: <b>\$642,600</b>
Maint./Assoc. <b>\$1,085 / \$0</b>	<a href="#">Flood Zone</a> : <b>Zone AO - Tool</b>	Stories / CPR: <b>8-14 / No</b>
Parking: <b>Assigned, Covered - 1, Street</b>	Frontage: <b>Other</b>	

[Zoning](#): **X2 - Apartment Precinct**

View: **City, Golf Course, Marina/Canal, Mountain**

**Public Remarks:** Welcome home to The Bel-Aire! Spacious two bedroom, one and one-half bath and a wonderful wrap-around lanai. Rarely available with over 1,100 sq. ft. of living area. Terrific views from floor to ceiling glass sliding doors toward Ala Wai, golf course, mountains and Waikiki..so light and airy. Great location in the heart of Waikiki close to shopping, excellent restaurants and world-famous beaches. Only two units per floor! Nice amount of closet/storage space throughout the condo, walk-in closet and half bath in primary bedroom, split A/C and washer/dryer in unit. Galley style kitchen is just the right size with a good amount of counter and cabinet/pantry space. Convenient parking stall near entry. Pool and lounge area just off the lobby. Easy to See! **Sale Conditions:** None **Schools:** , , \* [Request Showing](#), [Photos](#), [History](#), [Maps](#), [Deed](#), [Watch List](#), [Tax Info](#)





Address	Price	Bd & Bth	Living / Avg.	Land   Avg.	Lanai	Occ.	FL	DOM
<a href="#">2015 Ala Wai Boulevard 9C</a>	<a href="#">\$629,000</a>	2 & 1/1	1,176   \$535	0   \$inf	176	73%	9	67

Address	Tax   Maint.   Ass.	Assessed Land	Assessed Building	Assessed Total	Ratio	Year & Remodeled
<a href="#">2015 Ala Wai Boulevard 9C</a>	\$214   \$1,085   \$0	\$160,600	\$482,000	\$642,600	98%	1961 & NA

<p><a href="#">2015 Ala Wai Boulevard 9C</a> - MLS#: <a href="#">202405914</a> - Welcome home to The Bel-Aire! Spacious two bedroom, one and one-half bath and a wonderful wrap-around lanai. Rarely available with over 1,100 sq. ft. of living area. Terrific views from floor to ceiling glass sliding doors toward Ala Wai, golf course, mountains and Waikiki..so light and airy. Great location in the heart of Waikiki close to shopping, excellent restaurants and world-famous beaches. Only two units per floor! Nice amount of closet/storage space throughout the condo, walk-in closet and half bath in primary bedroom, split A/C and washer/dryer in unit. Galley style kitchen is just the right size with a good amount of counter and cabinet/pantry space. Convenient parking stall near entry. Pool and lounge area just off the lobby. Easy to See! <b>Region:</b> Metro <b>Neighborhood:</b> Waikiki <b>Condition:</b> Above Average <b>Parking:</b> Assigned, Covered - 1, Street <b>Total Parking:</b> 1 <b>View:</b> City, Golf Course, Marina/Canal, Mountain <b>Frontage:</b> Other <b>Pool:</b> Zoning: X2 - Apartment Precinct <b>Sale Conditions:</b> None <b>Schools:</b> , , * <a href="#">Request Showing</a>, <a href="#">Photos</a>, <a href="#">History</a>, <a href="#">Maps</a>, <a href="#">Deed</a>, <a href="#">Watch List</a>, <a href="#">Tax Info</a></p>						
---	--	--	--	--	--	--

DOM = Days on Market, Occ. = Occupancy, FL = Floor Number