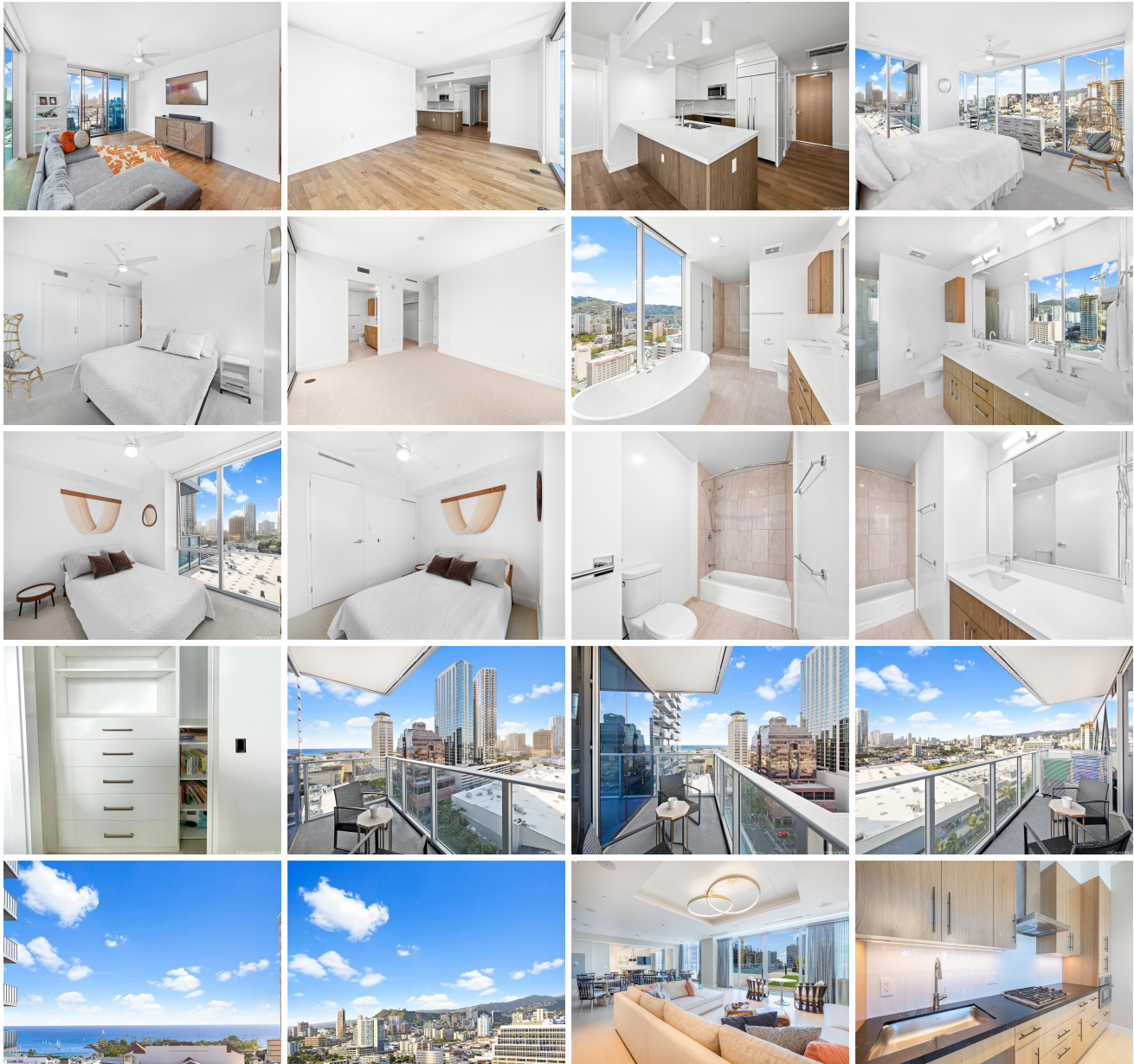


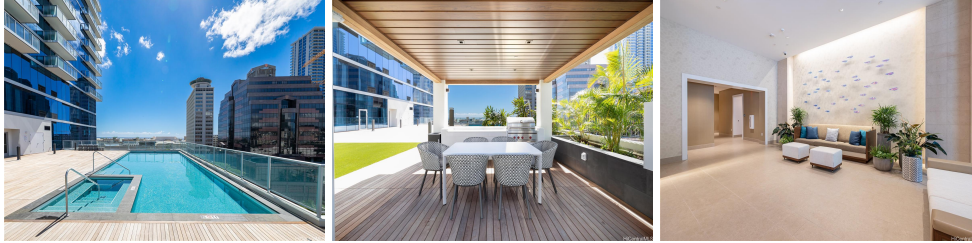
Azure Ala Moana 629 Keeaumoku Street Unit 1412, Honolulu 96813 * Azure Ala Moana *

\$1,390,000

Beds: 2	MLS#: 202405934, FS	Year Built: 2021
Bath: 2/0	Status: Active Under Contract	Remodeled:
Living Sq. Ft.: 1,092	List Date & DOM: 03-07-2024 & 62	Total Parking: 2
Land Sq. Ft.: 0	Condition: Above Average	Assessed Value
Lanai Sq. Ft.: 100	Frontage:	Building: \$1,344,900
Sq. Ft. Other: 0	Tax/Year: \$381/2024	Land: \$44,800
Total Sq. Ft. 1,192	Neighborhood: Holiday Mart	Total: \$1,389,700
Maint./Assoc. \$1,055 / \$0	Flood Zone : Zone X - Tool	Stories / CPR: 8-14 / No
Parking: Assigned, Covered - 2, Tandem	Frontage:	
Zoning : 33 - BMX-3 Community Business M	View: City, Mountain, Ocean, Sunset	

Public Remarks: This unique 12-stack corner residence at Azure Ala Moana, is currently on the market. Featuring 1,092 sqft offers 270-degree views, a spacious lanai, and premium upgrades throughout. Revel in the elegance of engineered wood floors, floor-to-ceiling windows, and a split AC system duct in ceiling. The kitchen showcases with glossy white cabinets, unique designed quartz countertops, and high-end appliances from Wolf, Sub-Zero and Bosch. Not to mention, this residence comes equipped with custom-designed closets and a 17sqft storage room, ideal for optimizing space and organization in condo living. Azure Ala Moana, a newly built condominium, presents an urban oasis with amenities including a pool, fitness center, BBQ cabanas, a theatre, a club lounge, and a puppy park. Embrace the convenience of city living while enjoying quick beach access and the world's largest open-air mall. **Sale Conditions:** None **Schools:** [Kaahumanu](#), [Stevenson](#), [Mckinley](#) * [Request Showing](#), [Photos](#), [History](#), [Maps](#), [Deed](#), [Watch List](#), [Tax Info](#)





Address	Price	Bd & Bth	Living / Avg.	Land Avg.	Lanai	Occ.	FL	DOM
629 Keeaumoku Street 1412	\$1,390,000	2 & 2/0	1,092 \$1,273	0 \$inf	100	65%	14	62

Address	Tax Maint. Ass.	Assessed Land	Assessed Building	Assessed Total	Ratio	Year & Remodeled
629 Keeaumoku Street 1412	\$381 \$1,055 \$0	\$44,800	\$1,344,900	\$1,389,700	100%	2021 & NA

[629 Keeaumoku Street 1412](#) - MLS#: [202405934](#) - This unique 12-stack corner residence at Azure Ala Moana, is currently on the market. Featuring 1,092 sqft offers 270-degree views, a spacious lanai, and premium upgrades throughout. Revel in the elegance of engineered wood floors, floor-to-ceiling windows, and a split AC system duct in ceiling. The kitchen showcases with glossy white cabinets, unique designed quartz countertops, and high-end appliances from Wolf, Sub-Zero and Bosch. Not to mention, this residence comes equipped with custom-designed closets and a 17sqft storage room, ideal for optimizing space and organization in condo living. Azure Ala Moana, a newly built condominium, presents an urban oasis with amenities including a pool, fitness center, BBQ cabanas, a theatre, a club lounge, and a puppy park. Embrace the convenience of city living while enjoying quick beach access and the world's largest open-air mall. **Region:** Metro **Neighborhood:** Holiday Mart **Condition:** Above Average **Parking:** Assigned, Covered - 2, Tandem **Total Parking:** 2 **View:** City, Mountain, Ocean, Sunset **Frontage:** Pool: **Zoning:** 33 - BMX-3 Community Business M **Sale Conditions:** None **Schools:** [Kaahumanu](#), [Stevenson](#), [Mckinley](#) * [Request Showing](#), [Photos](#), [History](#), [Maps](#), [Deed](#), [Watch List](#), [Tax Info](#)

DOM = Days on Market, Occ. = Occupancy, FL = Floor Number